



Countywide SENCO Forum

Term 1 – Primary Schools:

26th September 2024

Date



Today's Presenters

- Siobhan Price– Assistant Director, School Inclusion (KCC)
- Ruth Gately– SEND Specialist Adviser (The Education People)
- Elizabeth Pole– SEND Therapies Team (KCC)
- Samantha Avison–Williams– SEND Quality Assurance and Practice Development Officer (KCC)
- Samantha Sheppard– Senior Commissioner (KCC)
- Rachel Hawkett, Gemma McCairn and Zoe Fish (NHS)
- Claire Packman– Health Lead for SEND (NHS)
- Rory Abbott– Project Lead (The Education People)

Housekeeping

- Please change your name via the Participant tab so that we can see who is present;
- You will be muted, but if you have questions then please type them in the chat box using full sentences. Questions will be collated after the session and a response will be provided via the Q+A document post-session;
- If there are any issues with your session within the main body of the presentation or within a breakout room, then please close the session and click on the link to start again. We will let you back in and get you connected back up to your session as quickly as possible;
- If you registered for the session using CPD Online then you should have a copy of these slides, the agenda and any other materials you need for these sessions. If you cannot see the slides that we are sharing, then please refer to those instead.

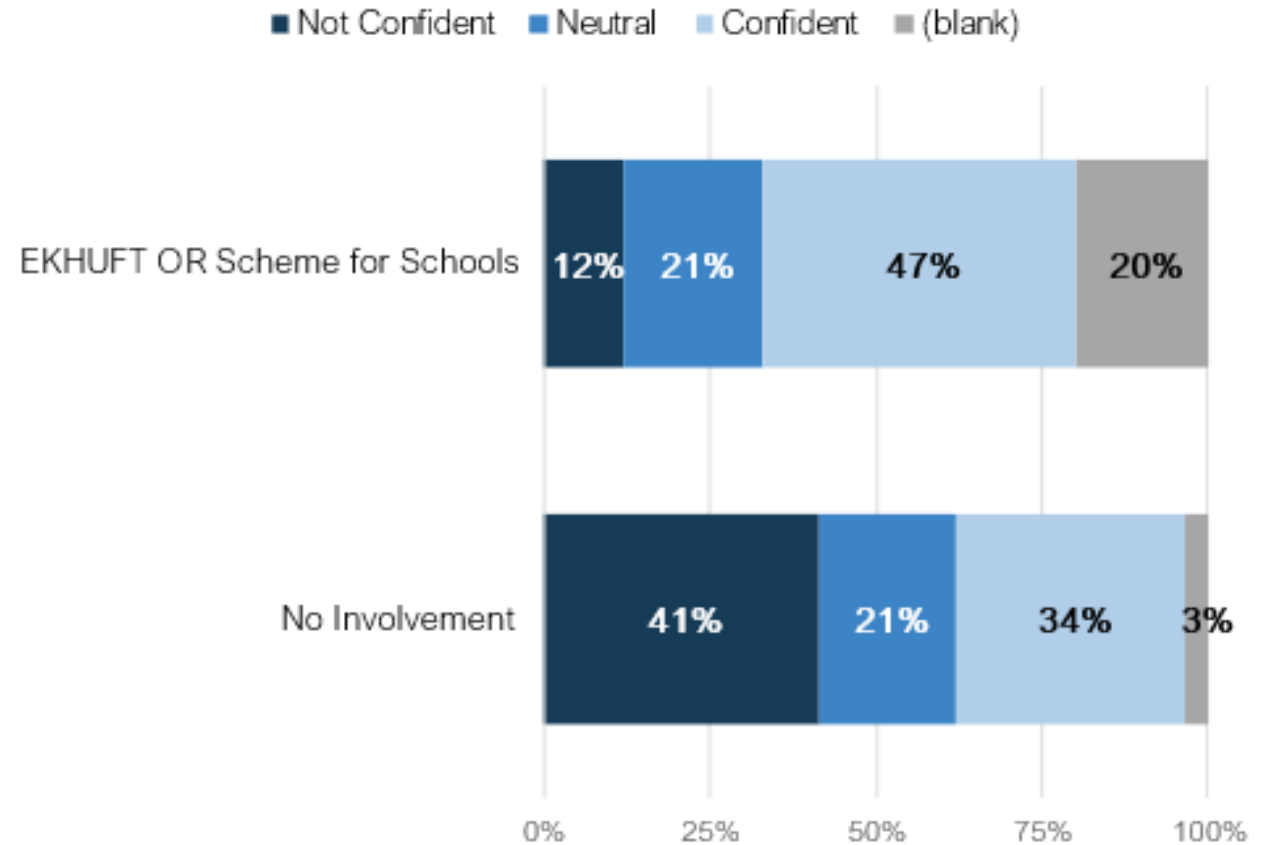
Agenda

Item	Topic	Lead/Time
1	Welcome/Housekeeping (Rory Abbott- Project Lead, TEP) Welcome Back (Ruth Gately – Specialist Lead Adviser SEND, TEP)	5 mins
2	Balanced System- Launch of Link Therapist Model (Elizabeth Pole, SEND Therapies Team, KCC)	10 mins
3	STLS Consultation (Sam Sheppard- Commissioning Team, KCC)	15 mins
4	Kent School Public Health- Universal offer for all children- Rachel Hawkett, Gemma McCairn and Zoe Fish (NHS)	15 mins
5	Health input to EHCP Annual Reviews (Claire Packman- Health Lead for SEND- NHS)	5 mins
6	Localities Update (Siobhan Price- Assistant Director, School Inclusion)	10 mins
7	Digitising Annual Reviews (Sam Avison-Williams- SEND Quality Assurance and Practice Development Officer)	20 mins
8	Countywide SENCO Conference update and training opportunities 2024/25 - Conclusion and Evaluation (Ruth Gately- Specialist SEND Lead Adviser TEP)	5 mins

Parent Survey – The Balanced System[®] for SLCN in schools



Analysis of parent survey (129 responses) May-July 2024:
Schools with no involvement in the Balanced System[®] had a significantly larger proportion of respondents (41%) not feeling confident that their child's speech, language and communication are being effectively supported, compared to only 12% of schools with involvement (either through accreditation or working with Link Therapist)



Update: The Balanced System[®] for Speech, Language and Communication



- Balanced System[®] tools demo sessions to support schools to evaluate provision for speech, language and communication have been well attended. If you missed this, email slcn@kent.gov.uk for a recording.
- Period of transition for KCHFT Speech and Language Therapy service – bear with and work together!
- See the Kelsi page which includes information about working with a Link Therapist: [The Balanced System[®] in Kent for SLCN – KELSI](#)

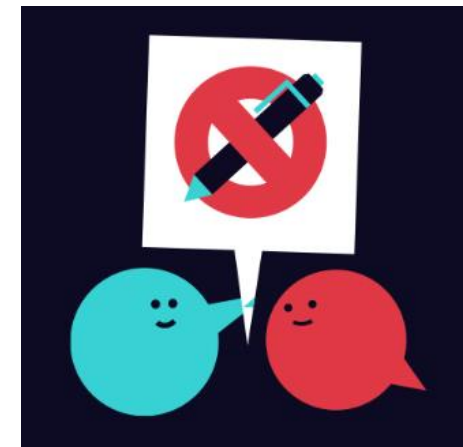


WE NEED YOUR HELP (those who've worked with a link therapist over past year) – We'd like to interview you about this way of working and how it has benefited pupils, for a video resource to explain this approach for schools, parents and other stakeholders – please contact slcn@kent.gov.uk if you would be willing to help.

Awareness raising - SLCN

- DLD Awareness day (Fri 18th October) [DLD Awareness Day - RADLD](#) or
- No Pens Day Wednesday (Weds 27th November) [No Pens Day - Speech and Language UK: Changing young lives](#)

Let us know if you plan to participate in either of these days and are willing to tell our comms team about it for news stories etc slcn@kent.gov.uk



Specialist Teaching and Learning Service

Public Consultation

Primary SENCo Forum
26 September 2024

Background and Context

- Kent County Council (KCC) is committed to improving outcomes for children and young people with SEND. It is currently undertaking a significant transformation programme to achieve this and there is a focus on enabling greater inclusion in mainstream education for children with SEND.
- During this period of significant change, it is important to understand how existing processes and services fit into the new ways of working.
- The current Service Level Agreement between KCC and the twelve special schools in Kent who provide the district STLS began 1 September 2022 and ends 31 August 2025.
- In July 2024, it was agreed that KCC would undertake a public consultation to understand how STLS might fit into the new ways of working being implemented as part of this transformation. This includes future funding options for STLS after the current Service Level Agreement ends.
- More information can be found here: [Agenda for Children's, Young People and Education Cabinet Committee on Tuesday, 9th July, 2024, 2.00 pm \(kent.gov.uk\)](#)

The consultation

In the consultation, we will seek your views on the following areas:

1. understanding gaps and duplications which might exist in the future ways of working and how this relates to the district STLS service across Kent.
2. understanding how the service might support mainstream schools and settings to deliver the outcomes as per the Children and Young People's Outcomes Framework in the future.
3. understanding the role district STLS may play in the new processes and pathways being implemented as part of the new ways of working, specifically in relation to the Locality Model of School Support and the Early Years Revised Model of Support. This includes the role of LIFT
4. understanding which of the identified funding options are preferable.

Timeline

Activity	Date
Consultation Goes Live	9 September 2024
Consultation Closes	3 November 2024 (midnight)
Analysis of responses and internal governance processes	4 November – 13 December 2024
Children Young People and Education Cabinet Committee (to present the findings of the consultation and make recommendations about the future service)	16 January 2025

How to Get Involved (1)

All the consultation documents can be found via this link:

[Specialist Teaching and Learning Service | Let's talk Kent](#)

This page includes:

- a document explaining what we are consulting and why
- a questionnaire to complete
- details of workshops that we are undertaking during the consultation process

If you are intending to attend a workshop, we suggest that you complete the questionnaire after attending the workshop.

How to Get Involved (2)

We will be holding virtual workshops during the consultation period for people to learn more about the consultation and share their views.

Workshops for headteachers and governors of mainstream schools and early years settings are:

- 30 September 2024: 11am – 12 noon
- 9 October 2024: 6pm – 7pm

Workshops for middle leaders, SENCOs and classroom teachers of primary settings are:

- 27 September 2024: 11am – 12 noon
- 30 September 2024: 10 – 11am
- 3 October 2024: 8 – 9am

You can register to attend a workshop by emailing: Inclusion@kent.gov.uk after which you will be sent a link to the meeting.

Specialist Teaching and Learning Service



Timeline

- Consultation opens**
Monday 9 September 2024
- Consultation closes**
Sunday 3 November 2024
- Consultation report**
The Consultation Report is available to view in the Documents section below

Kent School Health – information for primary schools

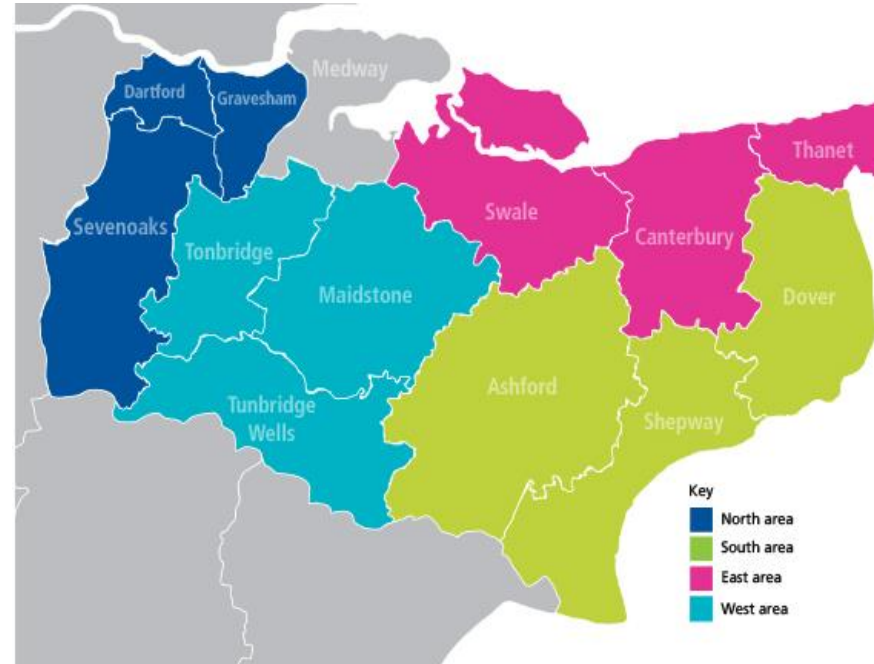
Kent School Nursing and Children and Young People's Counselling Service.





Objectives

- Who are we?
- What do we offer?
- Whole school approach team.



Kent School Health

Team of school nurses and practitioners who work with children and young people aged four to 19, and their families, including those who don't attend school.





Children and young people

School health work across education and health, providing a link between school, home and the community, however this is not just exclusive for children who access educational settings. We work **inclusively** with children:

- Special educational needs and disabilities (SEND)
- Not in education
- Home-schooled
- Under-reached communities
- Safeguarding, risk and protection.

Pathways

- General health
- Emotional wellbeing
- Children and young people's counselling



Primary school-age

We provide advice, support and help on health issues and refer to specialist services when needed.

- Daytime and night time wetting and soiling behaviour issues.
- Healthy eating and lifestyle.
- Emotional health and wellbeing.
- Puberty and growing up.
- Sleep.
- Complex health needs.

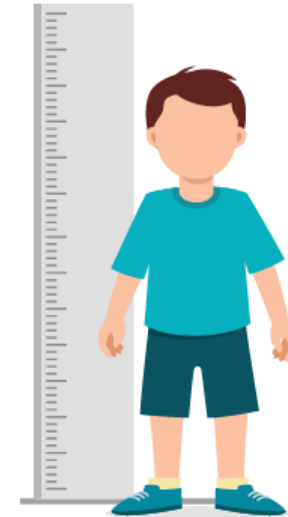




Health checks

There are several screening programmes offered to children in reception:

- Height and weight from September 2024.
- Hearing from January 2025.
- Vision from April 2025.



Health and development reviews

- Offered in reception and year six.
- Early intervention.
- Identify pupils who need one-to-one support.
- Whole school report.



Emotional wellbeing

- We provide low-level support for emotional health and wellbeing.
- This includes a holistic assessment followed by six sessions of support.
- Suitable for young people who may be experiencing low level anxiety, difficulty in managing friendship problems, worried about changes such as moving from primary to secondary school or exam stress.



Children and young people's counselling

- The Children and Young People's Counselling Service provides medium-level support.
- Young people meet with a trained counsellor for six sessions.
- Approximate waiting time of 18 weeks.
- Children do not need to be in formal education to access counselling sessions.



Whole school approach

- Relationships and sex education.
- Health information.
- Healthy lifestyles.
- Emotional health, wellbeing and resilience.
- Personal, social, health and economic education.
- Drug and alcohol education.





Calls to Kent School Health: 0300 123 5205 and select option two

- Discuss any concerns (general or emotional health) you have for a child or young person.
- Provide advice on appropriate referrals.
- Provide support strategies if a referral isn't appropriate at that time.

How to contact Kent School Health or Immunisation Team

- Call: **0300 123 5205** and select option two.
- On-line referral: www.kentcht.nhs.uk/forms/school-health-service-referral-form/
- kentchft.kentschoolhealth@nhs.net / kchft.cyp-immunisationteam@nhs.net
- Whole School Approach:
kentchft.wholeschoolhealth@nhs.net



Kent Family

is here for your child's growth,
happiness and health.

family.kentcht.nhs.uk



(we care)

Other sources of support

For parents or carers

- Kent resilience hub www.kentresiliencehub.org.uk
- Good mental health matters
www.goodmentalhealthmatters.com/forparents





Compassionate



Aspirational



Responsive



Excellent

 **In everything we do, we care** 

Possibly having a central email for nhs services so that we can request centrally for updates? Or even an annual contact list that can be shared with schools for local services

At the very least, up to date paperwork or reports need to be shared. It's always very welcome when they attend in person. I have only had this happen for one pupil.

More accessibility from CAMHS CYMPS as attempting to get information from them was met with no understanding of the process and no response within time frame (4 weeks in this case)

We hardly receive any health input apart from very late reports etc. It would be helpful to have an actual conversation with the professional.

Should we be giving more notice or what is the expectation around documentation and a time scale? Is this just to come from parents/carers or from the professionals?

Some health professionals are very supportive of children with EHCPs especially the SaLT team.

Together, we can

For health professionals to be able to attend some annual reviews.

It is difficult to find the information of professionals from health to invite and we rely heavily on prenatal to provide us with the details (not OT/PT)

By them attending when invited. Paediatricians, hospitals, CAMHS, Dr's etc are not invited anymore due to previous non attendances or no replies previously

They rarely actively participate and rarely provide an up to date report. We usually have to work from verbal information parent gives as sometimes, there letters and reports are not updated. I'm not sure the NHS has capacity to do anything about this, though!

We have to pay independent SALT and OT for reviews, reports and often even to deliver provision detailed in section F due to lack of NHS availability

It should be a given that they either attend the Annual Review meeting or send a report prior to the meeting so it can be discussed at the meeting.

Be more forthcoming! A lot of the annual review is left to the SENCO and this can be ineffective in complex cases. More support is needed from health.



What are we doing about it?

- **Working with you**
- **Educating Health Professionals**
- **Understanding expectations**
- **Piloting Guide**
- **Contact lists**
- **Updates**

Thank You!



SEN Inclusion in Schools Localities development update.

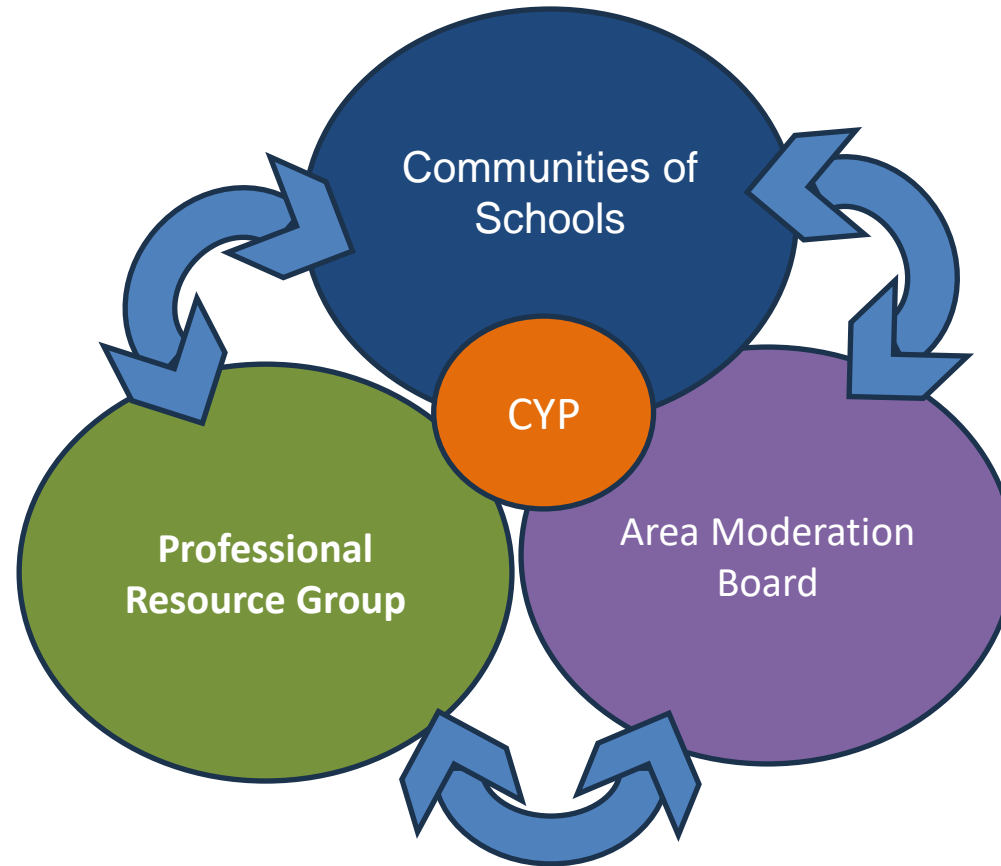
Countywide SENCO Forum
25th and 26th September 2024
Siobhán Price

Communities of Schools meetings

- East – 13th September
- North – 16th September
- South – 17th September
- West – 18th September

- Thank you to all who attended.

Meeting Needs Locally



What we want for all of Kent's children – the Kent children and young people outcomes framework



What is the Local Area?

‘Local area partnership’ refers to those in education, health and care who are responsible for the strategic planning, commissioning, management, delivery and evaluation of arrangements for children and young people with SEND who live in a local area. A local area is the geographic footprint of a local authority. When evaluating the local area partnership, inspectors focus mainly on how effectively the local authority and integrated care board (ICB) jointly plan, evaluate and develop services for children and young people with SEND.

Community Chair

- Job Description
- Recruitment

- JD is on your tables and will be sent out after all four area meetings
- Expressions of interest to be sent in by Friday 25th October
- You must have the agreement of your HT/Governors/Trust/Trustees before you apply
- Selection criteria will be based on the strength of chairing skills
- Period of secondment – January 2025 – July 2026

Community Timeline

- September – October 2024 – expressions of interest to be submitted
- November – December 2024 – selection
- January - February 2025 – Induction
- Spring 2025 – first Community meetings to take place
- Spring – summer 2025 - support the development of the operational guidance for Communities of schools

EOI should be emailed to Emily.Bambridge@kent.gov.uk

Continuum of Need & Provision – Working Groups

Accessibility	
Christopher Dale	St Nicholas CE Primary Academy
Laura Fowler	Bidborough Primary School
Mainstream	
Karen Blake-Morris	Dartford Bridge Community Primary School
Matt Baron	St John's Catholic Comprehensive School
Grammar	
Lucy Holmes	Dane Court Grammar School
Charlotte Speed	Simon Langton Grammar School for Boys
Lucy Pickard	Brunswick House
Mainstream Plus	
Sam Frorath	The Abbey School
Rachel Peachey	Tenterden Primary Foundation
Krissy Yates	Turner Schools
Sarah Stein	Godinton Primary School
Lucy Stephens	Homewood School and Sixth Form
Alternative Provision	
Yvonne Nunn	Hampton Primary School
Kayleigh Hales	The Rosewood School
Emma Law	East Stour Primary School

SEMH	
Pauline Blayney	Maidstone and Malling Alternative Provision
Emma Bracey	Salmestone Margate
Neerasha Singh	Northfleet Nursery School
Anne Marie Middleton	N/A
Sarah Roberts	Holy Trinity & St John's Church of England Primary School
Kate Le Page	The Wells Free School
Infant	
Nicole Hyett	St Crispin's CP Infant School
Andy King	Riverhead Infants' School
Angie Cox	Herne Church of England Infant School
PRUs	
Michaela Clay	Enterprise Learning Alliance
Michelle Hinkley	Two Bridges
SRP	
Alistair Williams	Longfield Academy
Karen Arnold	The Oaks Infant School & Minterne Junior School
Chris Jackson	King's Farm Primary School

Comms Strategy

- Christine's Bulletin – weekly
- KALE updates – fortnightly where necessary
- Countywide SENCO forums – termly
- KELSI Localities implementation page – will be open at the end of September and updated regularly
- Termly virtual KIT meetings – for HTs and SENCOs

Timeline 2024/2025

August 2024 – Cabinet decision to proceed with the model

September 2024 – Socialisation of communities of schools

September 2024 – Localities page on KELSI

October – November 2024 – Funding consultation with schools

October – December 2024 – Recruitment and selection of Community Chairs

December 2024 – Report to Schools Funding Forum

January 2025 – Cabinet decision on funding

January 2025 – Meeting with Community Chairs, induction, setting expectations.

Spring 2025 – next meeting with Communities of Schools including Special Schools, PRUs, Health and other services

Spring 2025 – finalisation of Continuum of Need and Provision

April 2025 – finalisation of financial model.

Spring Summer 2025 – moderation structures etc to be established ready for Sept 2025.

KCC/ICB Integrated Approach to Neurodiversity

A new way of working:

[Autism and attention deficit hyperactivity disorder \(ADHD\) services :: Kent & Medway ICS \(kmhealthandcare.uk\)](https://www.kmhealthandcare.uk)

Support without a diagnosis:

‘Getting a diagnosis is not the only route to support and many people will not need an assessment if they can access appropriate support at the right time. NHS Kent and Medway is working with NHS providers, Kent County Council, Medway Council, families, carers, voluntary and community sector organisations and people with lived experience to change the way health, social care and education professionals support people who may be neurodivergent.

We are looking at new ways of working together and are creating a central place online for the resources available to help you.

New ways of working with GP surgeries are being developed and we are rolling out projects in schools which will help families to access support in the community.’

SEND Quality Assurance & Practice Development:

Digitised Annual Review Form

Samantha Avison-Williams
SEND Quality Assurance &
Practice Development Officer

Chloe Hazell
Analyst Officer – Continuous Improvement
Kent Analytics

Overview:

- The digitised form
- Changes
- Benefits
- How to use the form – demonstration video
- FAQ
- Accessing support & providing feedback

The Digitised Form :

- Went live on 2/9/24
- To be used for all Annual Reviews from now onwards
- Is part of an ongoing review of Annual Review practices
- Will evolve & be responsive to feedback

Changes:



The content of the Annual Review form remains unchanged, however, there are some functional changes. These include:

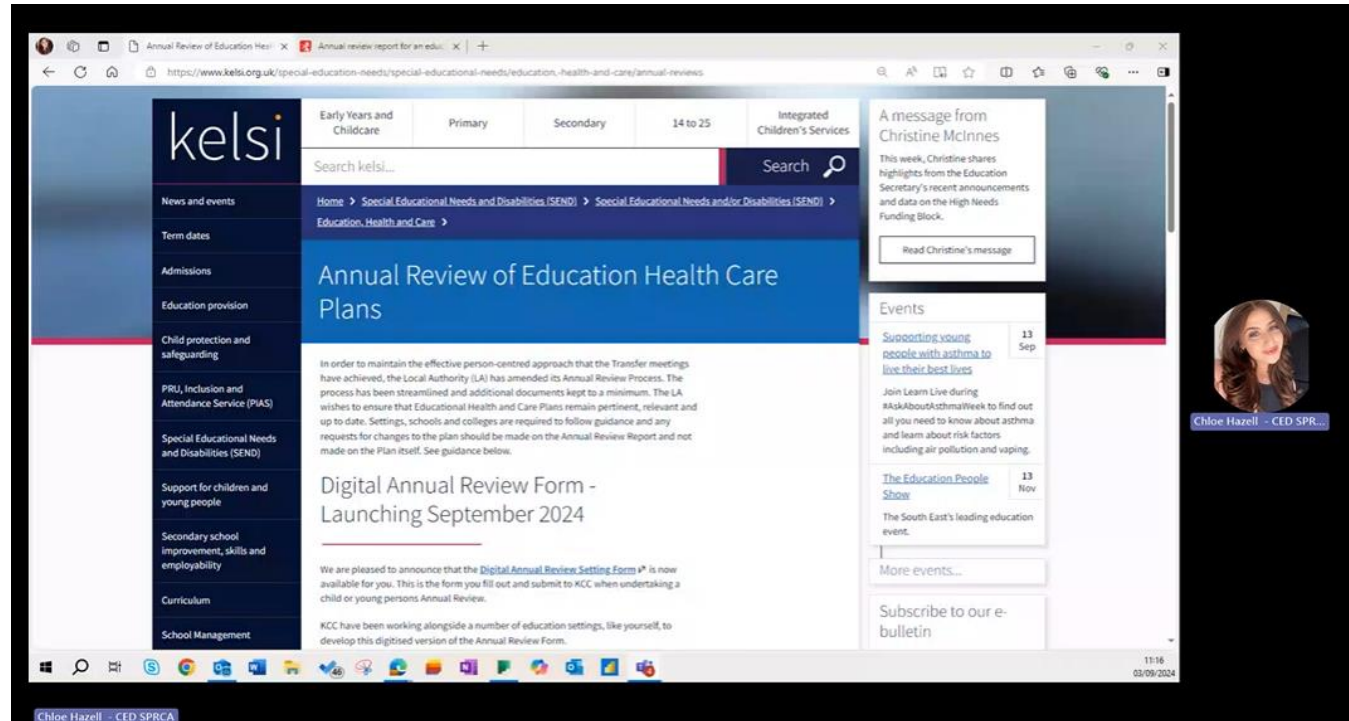
- You will only be presented with the questions you need to answer
- You will be able to upload supporting documents throughout the form – it will be clear what you need to upload & when
- You will no longer need to send password protected documents; the digitised form is secure – all required documents can be uploaded to the form
- You will no longer encounter the formatting challenges associated with the Word document

Benefits:

- Improved tracking & prioritising of cases
- Improved oversight & reportability
- Improved functionality - increased clarity, reduced duplication

Goal: Improved processing efficiency

How to use the form:



https://kentcountycouncil-my.sharepoint.com/:v/g/person/chloe_hazell_kent_gov_uk/EdY0sUqquzZFgiQFXIAyp5MBIHkF_ia8flU0HgOsVXhd3Q?e=qg9AXv&nav=eyJyZWZlcnJhbEluZm8iOnsicmVmZXJyYWxBcHAiOiJTaGFIYWY1XZlZmVycmFsTW9kZSI6InZpZXcifX0%3D&referrer=Outlook.Desktop&referrerScenario=email-linkwithembed

Sending out information and advice before the Annual Review meeting

- The Code of Practice states that advice & information gathered (which may include professional reports etc) should be sent to parents/carers & other invited parties at least 2 weeks before the meeting
- It is essential that families are well prepared ahead of the meeting & care is taken to ensure nothing comes as a surprise
- There is no expectation that the form itself should be shared at this point

Accessing Support & Providing Feedback:



Curriculum
School Management
Kent Association of Leaders in Education
School Finance
HR information and guidance for Kent maintained schools
Policies and guidance
Pathways for All - Kent 16 to 19 review

Based on feedback from settings, we have worked to make the form easier to navigate, eliminating the formatting issues experienced with a Word Document, and provide a secure way to submit your annual review paperwork.

At the same time, this form ensures all the relevant information, and views are still captured. This also helps us complete our tasks in a more efficient way, which will be of further benefit to the children, young people, and families of Kent.

To access the new Annual Review Form, please use the following link:

- [Digital Annual Review Form](#) ↗

Any feedback on the new digitised Annual Review form is appreciated. If you have any comments, please complete the following [online form](#) ↗

Further information on the digital form

Saving and coming back to the form

For technical queries & suggestions for future improvements relating to the digitised form please complete the online feedback form located on **Kelsi**.

For general queries about Annual Review procedures or specific questions relating to individual cases, please continue to refer to Casework Officers, the Annual Review Team etc.

SENCO Conference 2024- 8th Oct: Detling

- Change of Keynote Speaker: Dr Pooky Knightsmith
- Members of Croydon Localities Team talking about the experiences of the Localities Model
- Contributions from Ofsted
- Kevin O'Neill from IQM (Inclusion Quality Mark)
- Local input from Rory Love OBE, Christine McInnes, Ruth Gately, Melissa Devine and more

[Register Here...](#)

Opportunities to network

Sharing good practice

Market Stalls- Local offers from KCC and NHS

School Improvement Team

Lunch provided

More spaces opened up...

Free Training for Mainstream Schools 24/25

Audience	Actual Title	Date/Time	Facilitator	Link to Register
Primary Teachers/TAs/LSAs	Creating an inclusive PRIMARY classroom: The power of the Mainstream Core Standards to support high quality teaching	24th October 2024- 16:00-18:00	Ruth Gately	Creating an Inclusive Primary Classroom (theeducationpeople.org)
		16th January 2025- 16:00-18:00		Creating an Inclusive Primary Classroom (theeducationpeople.org)
Secondary Teachers/TAs/LSAs	Creating an inclusive SECONDARY classroom: The power of the Mainstream Core Standards to support high quality teaching	23rd October 2024- 16:00-18:00	Ruth Gately	https://www.theeducationpeople.org/training-and-events/creating-an-inclusive-secondary-classroom-231024/
		15th January 2025- 16:00-18:00		Creating an Inclusive Secondary Classroom (theeducationpeople.org)
Primary Pastoral Staff	Creating an inclusive PRIMARY environment: Supporting pupils' social and emotional wellbeing using the Mainstream Core Standards	14th November 2024- 16:00-18:00	Ruth Gately	Creating an Inclusive Environment (Primary) (theeducationpeople.org)
Secondary Pastoral Staff	Creating an inclusive SECONDARY environment: Supporting pupils' social and emotional wellbeing using the Mainstream Core Standards	13th November 2024- 16:00-18:00	Ruth Gately	Creating an Inclusive Environment (Secondary) (theeducationpeople.org)
Primary School Leaders	Creating an inclusive PRIMARY school: Leading a whole school approach to embed the Mainstream Core Standards	21st November 2024- 16:00-18:00	Ruth Gately	Creating an Inclusive School for Primary School Leaders (theeducationpeople.org)
		6th February 2025- 16:00-18:00		Creating an Inclusive School for Primary School Leaders (theeducationpeople.org)
Secondary School Leaders	Creating an inclusive SECONDARY school: Leading a whole school approach to embed the Mainstream Core Standards	20th November 2024- 16:00-18:00	Ruth Gately	Creating an Inclusive School for Secondary School Leaders (theeducationpeople.org)
		5th February 2025- 16:00-18:00		Creating an Inclusive School for Secondary School Leaders (theeducationpeople.org)

Free Training for Mainstream Schools 24/25- Governors

Course Title	Date	Facilitator	How to register
Every Governor is a Governor of SEND	10th December 2024- 18:00-20:00	Ruth Gately	To register, Governors need to log onto GovernorHub. These sessions are free so if your school does not subscribe to GovernorHub then please register for the training by emailing governorservicestraining@theeducationpeople.org
	12th March 2024- 18:00-20:00		
How to monitor a school with an SRP: Support for governors	1st October 2024- 18:00-20:00	Ruth Gately	To register, Governors need to log onto GovernorHub
Supporting Inclusion: Advice for SEND Governors	9th October 2024- 18:00-20:00	Ruth Gately	To register, Governors need to log onto GovernorHub

Session Feedback and Evaluation

[Countywide SENCO Forum- Evaluation and Feedback Form- September 2024](#)



Many thanks!!



**If you have any
questions then please
email**

**[Jessica.Minards@the
educationpeople.org](mailto:Jessica.Minards@theeducationpeople.org)**

**with the subject title of
Countywide SENCO
Forum Query.**

