

# The SEN Inclusion Directory



# Contents

Welcome to the SEN Inclusion Directory	3
Important Links	4
Inclusion	7
SEND Inclusive Practice	8
Kent's Way	10
The Balanced System®	11
AET Autism education trust	12
Nurture UK	13
i-Thrive	14
The Effective Inclusive Practice Guide	15
SENCoS and Forums	16
ILEs- Inclusion Leaders of Education	17
School Health and Nursing Services	18
NELFT- North East London NHS Foundation Trust	19
KCHFT (Kent Community Health Foundation Trust)	19
EKHUFT (East Kent Hospital University Foundation Trust)	19
Council for Disabled Children	20
(PCN) Primary Care Networks	20
Kent and Medway Integrated Care Systems	21
Involve	21
Imago	21
Social and Emotional Mental Health (SEMH) Needs	21
Training Directory	22
Early Years Training	22
STLS:	24
Physical Disability	26
Hearing impairment	27
Visual impairment	28
Multi-sensory impairment	29
Information Advice Support Kent (IASK) Workshops	31
Virtual School Kent (VSK) Training	32
Kent Education Evidence (KEE) Hub Training	33
Kent Community Learning and Skills	34
Commissioned Services	35

# Welcome to the SEN Inclusion Directory

Guidance for primary and secondary schools, academies, and other professionals working with children and young people who have or may have Special Educational Needs and/or Disabilities.

## Our Purpose

The purpose of this document is to help support schools and professionals by providing them with access to detailed information about training and resources available for different need types.

It also provides signposting to outside services, teaching and learning resources and wider information.

## Our Vision

Our vision is to bring together the training and resources from across Kent and nationally, which schools and professionals can use to support children, young people and their families. This document aims to reach and include the wide range of resources which is available to support children with SEN in all settings across the continuum.



## Linked Documents

<b>CATIE</b>	<a href="#">Countywide Approach to Inclusive Education (CATIE)</a>
<b>Kent County Council Who's Who</b>	<a href="#">SEND teams and their roles - Kent County Council</a>
<b>SEND Code of Practice</b>	<a href="#">SEND code of practice: 0 to 25 years - GOV.UK (www.gov.uk)</a>
<b>District Dashboard</b>	<a href="#">Microsoft Power BI</a>
<b>Kelsi</b>	<a href="#">Kelsi-Home</a>
<b>Community Learning and Skills</b>	<a href="#">Adult learning courses in Kent   Community Learning and Skills</a>
<b>Hearing Services</b>	<a href="#">West Kent Children's Hearing Service</a> <a href="#">East Kent Children's Hearing Service</a> <a href="#">National Deaf Children's Society (NDCS)</a> <a href="#">Kent Deaf Children's Society (KDCS)</a>
<b>Mainstream Core Standards</b>	<a href="#">Special educational needs mainstream core standards</a>
<b>STLS</b>	<a href="#">Hearing impairment support</a> <a href="#">Sensory impairment support</a> <a href="#">Physical disabilities support</a> <a href="#">Professional support</a>
<b>Multi-Sensory Support-STLS- KCC</b>	<a href="https://www.sense.org.uk/">https://www.sense.org.uk/</a> <a href="https://deafblind.org.uk/">https://deafblind.org.uk/</a> <a href="https://www.natsip.org.uk/">https://www.natsip.org.uk/</a>
<b>Visual Impairment Support- STLS</b>	<a href="#">Vision impairment support from STLS - Kent County Council</a> <a href="https://www.kab.org.uk/">https://www.kab.org.uk/</a> <a href="https://www.rnib.org.uk/">https://www.rnib.org.uk/</a> <a href="https://www.rsbc.org.uk/">https://www.rsbc.org.uk/</a> <a href="https://www.victa.org.uk/">https://www.victa.org.uk/</a> <a href="https://www.guidedogs.org.uk/">https://www.guidedogs.org.uk/</a>
<b>Parent Guide</b>	<a href="#">Mainstream Core Standards guide for parents (kelsi.org.uk)</a>
<b>Transition Framework</b>	<a href="#">The CATIE Transition Framework (PDF, 549.3 KB)</a>
<b>Transition Dates</b>	<a href="#">Transition - KELS!</a>

## Linked Documents (continued)

<b>District transition Plans</b>	<p><a href="#">Ashford Transition Plan (PDF, 242.4 KB)</a></p> <p><a href="#">Canterbury Transition Plan (PDF, 295.6 KB)</a></p> <p><a href="#">Dartford Transition Plan (PDF, 220.6 KB)</a></p> <p><a href="#">Dover Nursery 2 to Year R (PDF, 267.7 KB)/ <a href="#">Year 6 to Year 7 Transition Plan (PDF, 299.3 KB)</a></a></p> <p><a href="#">Folkestone and Hythe Transition Plan (PDF, 224.3 KB)</a></p> <p><a href="#">Gravesham Transition Plan (PDF, 220.6 KB)</a></p> <p><a href="#">Maidstone Transition Plan (PDF, 293.1 KB)</a></p> <p><a href="#">Sevenoaks Early Years to Primary (DOCX, 104.5 KB)/ <a href="#">Primary to Secondary Transition Plan (DOCX, 132.8 KB)</a></a></p> <p><a href="#">Swale Transition Plan (PDF, 311.5 KB)</a></p> <p><a href="#">Thanet Nursey 2 to Year R (PDF, 202.9 KB)/ <a href="#">Year 6 to Year 7 Transition Plan (PDF, 254.2 KB)</a></a></p> <p><a href="#">Tonbridge and Malling Transition Plan (PDF, 303.6 KB)</a></p> <p><a href="#">Tunbridge Wells Transition Plan (PDF, 257.8 KB)</a></p>
<b>District Directories</b>	<p><a href="#">East Area Directory of Support Services</a></p> <p><a href="#">North Area Support Services</a></p> <p><a href="#">South Area Support Services</a></p> <p><a href="#">West Kent Area Support Services</a></p>
<b>The Local Offer Hub</b>	<p><a href="#">Special educational needs and disabilities (SEND) - Kent County Council</a></p> <p>Information about support for parents/carers and siblings. The Local Offer brings together in one place information about health, education and social care for children and young people from birth to 25 years old who have a special educational need or disability (SEND) and their families and the Children’s workforce who are supporting the families.</p>
<b>Kelsi Resource Directory</b>	<p><a href="#">The Kelsi Directory</a> is a single virtual space where education professionals can access all SEN and Education information and communication.</p>

## Linked Documents (continued)

<b>The SEND Handbook</b>	<a href="#">The SEND Handbook</a> is designed to help professional working with children and young people to find the right information at the right time.
<b>Self-Harm Prevention Advice</b>	<a href="#">Self-Harm Prevention Advice</a> guidance supports a change in practice to ensure that children, young people, and their families are supported to thrive.
<b>Local Services Directory</b>	<a href="#">Local Offer</a> has hundreds of support groups, charities, and activities across Kent including activities that free and accessible, both face to face and online.
<b>Kent Family Hubs</b>	<a href="#">Kent Family hub</a> provides advice, support and services to help throughout your family journey, from newborns to 19-year-olds, or up to 25-year-olds with special educational needs or disabilities (SEND).
<b>Kent PACT</b>	<a href="#">Kent PACT</a> is a parent/carer forum set up for parents of children and young adults with disabilities and additional needs. They offer a way to have your say and influence us, local health services and other organisations in improving local services. Some of the parents on the forum are also key members of the joint KCC/NHS SEND Improvement Board.
<b>Pdnet</b>	<a href="#">pdnet</a> is network for those supporting learners with a physical disability. It is a free to join, national network that provides professionals in education with support in promoting positive outcomes for children and young people with physical disability.
<b>KALE (Kent Association of Leaders and Education)</b>	<a href="#">KALE</a> represents the leaders of schools and FE Colleges in Kent. It brings together the collective voice of Headteachers, Executive Headteachers, CEOs, Principals and others representing early years, primary, secondary and post-16 as well as Special Schools, Pupil Referral Units and other alternative curriculum providers.
<b>SEMH Toolkit for Schools 2024</b>	<a href="#">SEMH Toolkit</a> highlights working together to support pupils with SEMH in a mainstream school and classroom setting.
<b>Bullying</b>	Methods to reduce <a href="#">bullying</a> within schools, as well as information and advice for families, parents and carers of children and young people who are experiencing bullying.
<b>Violence Reduction Unit</b>	<a href="#">Violence Reduction Unit</a> is a partnership between the police, local councils, health service providers and other key agencies to deliver a reduction in violence. The VRU has published an education toolkit for schools to help prevent serious violence in the county. <a href="#">VRU Schools Toolkit</a> .

# Inclusion

Inclusion is described as the practice of ensuring that people feel they belong, are engaged, and connected. It is a universal human right whose aim is to embrace all people. It is about valuing all individuals, giving equal access and opportunity to all and removing discrimination and other barriers to involvement.

What does inclusion mean in Kent?

As the champion of families, children, and young people our collective priorities are to be certain that all children and young people are engaged with and included in the provision of high-quality inclusive education. Ensuring that, whatever their circumstance or ability, our children have a sense of belonging, feel respected, are valued for who they are and develop the knowledge and skills required for adult life. In doing so, we strive to achieve a continuous improvement in standards, a significant narrowing of achievement gaps for vulnerable groups of learners and a wholly inclusive education system which ensures:

- Equitable access for all. Sufficient, appropriate, quality education provision is available for all children and young people in Kent.
- No child is left behind. All children and young people are supported to be engaged fully in their education.
- Effective collaboration. There is collaboration and multi-agency working providing a self-improving, sustainable system which supports the education of all.

The Kent Inclusion Statement was co-produced with Kent Parents and Carers Together (PACT), Kent Headteachers, Special Educational Needs Co-ordinators (SENCOs) and KCC officers. The statement reflects partnership working between education leaders and KCC in developing a countywide approach to inclusive education. We strive to ensure that all schools, academies, post 16 providers and early years and childcare settings can provide inclusive education, and to follow both the spirit and the letter of the law with inclusive values. The statements reflect a joint commitment of all the partners across the Kent education system including settings, schools, colleges, and the LA.



## SEN Inclusive Practice

KCC has invested in a team of SEN Inclusion Advisors who work predominantly with mainstream schools and settings to support the development of inclusion practice.

SEN Inclusion Advisers are qualified teachers with extensive SEN experience who work with schools and post 16 education settings, including colleges, to:

- ensure children and young people receive the highest standard of support and provision for their SEN.
- monitor and evaluate the provision of those children and young people with an education, health and care (EHC) Plan, and ensure those children and young people are making progress towards their EHC Plan outcomes.
- support with a successful move to the next phase of education.



## SEN Inclusive Practice (continued)

For more information on Inclusion Advisors please contact the team via email:

[sendinclusionsadvisers@kent.gov.uk](mailto:sendinclusionsadvisers@kent.gov.uk)

Area SEN Coordinator (Interim)	Area SEN Coordinator (Interim)	Area SEN Coordinator
Kasha Zolnowska (West)	Alison Deeney (East)	Russell Martin (South)

Countywide SEN Inclusion Advisers with link districts	
Dartford Lead	Paula Barnes: <a href="mailto:Paula/barnes@kent.gov.uk">Paula/barnes@kent.gov.uk</a>
Tonbridge / Malling Lead	Samantha Parker Bruce: <a href="mailto:Samantha.bruce2@kent.gov.uk">Samantha.bruce2@kent.gov.uk</a>
Swale Leads	Laura Moss W-F: <a href="mailto:Laura.moss@kent.gov.uk">Laura.moss@kent.gov.uk</a> Chloe Keable (0.4): <a href="mailto:Chloe.keeble@kent.gov.uk">Chloe.keeble@kent.gov.uk</a>
Dover Lead	Teresa Dowling: <a href="mailto:Teresa.dowling@kent.gov.uk">Teresa.dowling@kent.gov.uk</a>
Gravesham Lead	Melanie Wenban: <a href="mailto:melanie.wenban@kent.gov.uk">melanie.wenban@kent.gov.uk</a>
Tunbridge Wells Lead	Zerina Slade: <a href="mailto:zerina.slade@kent.gov.uk">zerina.slade@kent.gov.uk</a>
Sevenoaks Lead	Chloe Keable (0.6): <a href="mailto:Chloe.keeble@kent.gov.uk">Chloe.keeble@kent.gov.uk</a>
Maidstone Lead	Helen Algar: <a href="mailto:helen.algar@kent.gov.uk">helen.algar@kent.gov.uk</a>
Canterbury Lead	Gina Turner: <a href="mailto:gina.turner@kent.gov.uk">gina.turner@kent.gov.uk</a>
Thanet Lead	Julia Duncan: <a href="mailto:Julia.Duncan@kent.gov.uk">Julia.Duncan@kent.gov.uk</a>
Folkestone / Hythe Lead	Sarah Hopker: <a href="mailto:sarah.hopker@kent.gov.uk">sarah.hopker@kent.gov.uk</a>
Ashford Lead	Alison Deeney: <a href="mailto:alison.Deeney@kent.gov.uk">alison.Deeney@kent.gov.uk</a> Charlotte Westmorland: <a href="mailto:charlotte.Westmorland@kent.gov.uk">charlotte.Westmorland@kent.gov.uk</a>

## ***Kent's Way***

Kent has commissioned a variety of services and frameworks to support schools in developing inclusive practice to better meet the needs of children and young people with SEN and their families.

### ***The Balanced System® for Speech and Language and Communication Needs (SLCN)***

Kent County Council (KCC) and NHS Kent and Medway Integrated Care Board (ICB) have committed to improving support for children and young people with speech, language and communication needs (SLCN) within the Kent County Council area. The initiative is underpinned by use of the Balanced System®, an outcomes-based framework and delivery model for integrated services, created by Marie Gascoigne and available through Better Communication CIC.

Find more information on the [Balanced System® website](#)



# The Balanced System®

## Role of schools and settings:

Every Kent school and setting should be working to achieve [15 Balanced System®](#) outcomes for children and young people.

These outcomes are divided into 5 strands:



1. Family Support: Parents have the confidence, knowledge and skills to support their role as a key communicative partner for their child.
2. Environment: Environments are enhanced to support children to understand and express themselves effectively.
3. Workforce: The workforce is confident and competent to support children with speech, language and communication needs.
4. Identification: Speech, language and communication needs are identified early and effectively.
5. Intervention: Children receive support to help them make progress in their speech, language and communication.

And within each strand, there are three levels: Universal, Targeted and Specialist.

For more information about the Balanced System® and what this means for your school visit [the Balanced System® in Kent for SLCN](#).

This page includes

- [Role of schools and settings](#)
- [Balanced System® tools for schools](#)
- [Working with a link therapist\\*](#)
- [Accreditation for schools and settings](#)

\*A link therapist is a named speech and language therapist who builds a relationship with a school and supports the school to develop provision for speech, language and communication at the universal, targeted and specialist levels.

For further support and guidance email: [SLCN@kent.gov.uk](mailto:SLCN@kent.gov.uk)

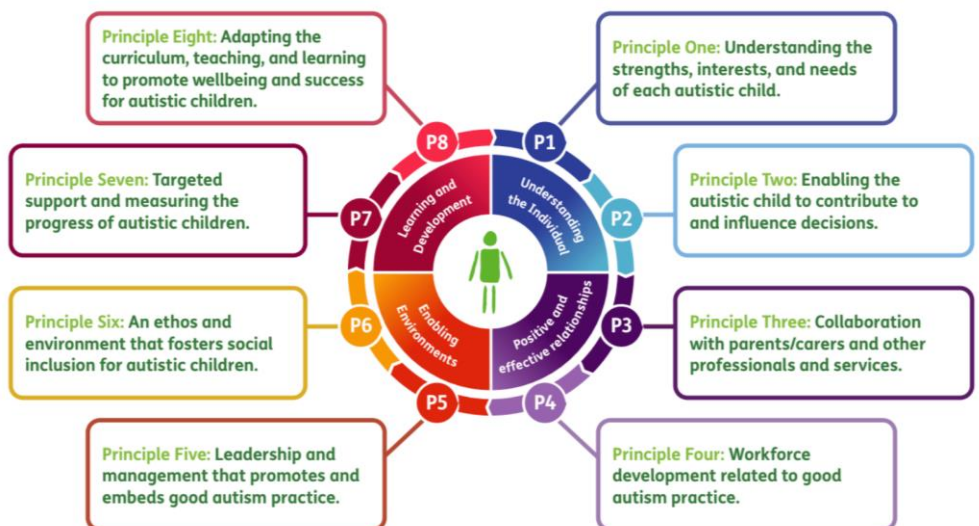
## AET Autism Education Trust

[AET](#) is a non-for-profit organisation, led by the National Autistic Society (NAS) and Ambitious about Autism and supported by the Department for Education. The AET develops training resources for the education workforce created in partnership with a panel of Autistic Young Experts, parents/carers, trainers, partners, education professionals, experts, and specialists.

KCC has invested in the licence for the AET so that the training modules and Standards Frameworks are available for all mainstreams education settings across the three phases: Early Years, School Age and Post 16. The AET Standards and Competency Frameworks form part of the evidence for the National Autistic Society Inclusion Accreditation Award and align with The Balanced System®, I-Thrive, and Nurture Group principles.

### The AET Eight GAP Principles

This is how the Eight Principles of Good Autism Practice are embedded in the four themes.



4 Schools Standards Framework



The AET champion a world where being different is something to be celebrated and where all autistic learners experience a positive education that supports their well-being. The AET training programme and frameworks aim to create a mainstream workforce who are skilled, knowledgeable and confident to educate autistic children and young people.

The AET promotes and supports partnerships throughout the education system to improve educational access, experience and outcomes for autistic children and young people.

For more information on [Autism Education Trust](#) via Kelsi, or to contact email AET at: [aetraining@kent.gov.uk](mailto:aetraining@kent.gov.uk)

## ***Nurture UK – Social and Emotional Wellbeing***

NurtureUK was commissioned by Kent County Council to run a three-year programme in 300 schools across the county, aimed at improving the wellbeing, attendance and educational engagement of all children, with a particular focus on children with special educational needs and disabilities (SEND). This programme has now ended.

The model is based on and guided by the [Six Principles of Nurture](#) using a range of tools and resources, notably the Boxall Profile assessment tool to identify and to address pupils' social, emotional and mental health needs. The nurturing approach to education offers a range of opportunities for children and young people to engage with missing early nurturing experiences, giving them the social and emotional skills to do well at school and with peers, and to develop their resilience and self-confidence.



Schools who participated in the KCC commissioned Whole School Nurture Programme between Sept 2021 and August 2024 can continue to access the Boxall Profile tool, free of charge, within the timeline confirmed by the provider.

NurtureUK supplies training and further resources to help teaching professionals develop a nurturing approach to their work, which enables earlier identification of needs and supports the social and emotional wellbeing of the pupils in their care. Further information on the [NurtureUK Training](#) options available and general information

The training provided by Nurture UK is not included in the KCC Core training offer, and further costs may be incurred. To discuss training and events please email;

[bookings@nurtureuk.org](mailto:bookings@nurtureuk.org)

## ***i-Thrive***

[i-THRIVE](#) is a framework that ensures that young people get the emotional wellbeing and mental health support they need when facing difficult situations. The goal is for every young person in Kent to thrive, but if they do need extra help, they know where to go to find the right support. Young people will be supported to get the help they need.

We bring together education settings and partner agencies in district based [emotional wellbeing and mental health workshops](#) with topics of discussion set by the localities to improve confidence, collaboration and coordination of the emotional wellbeing offer to schools. In addition we also offer [emotional wellbeing and mental health countywide learning events for schools](#) which take place online exploring emerging trends.

There is a range of [services and support for children and young people](#) in Kent as well as [guidance for parents and carers](#).

To stay in touch and keep up to date with all the latest news you can join our [mailing list](#). We share termly bulletins for school staff as well as regular Sways designed for young people to help support their own emotional wellbeing and mental health.



## ***The Effective Inclusive Practice Guide***



A collection of case studies taken from across Kent. A question that we are often asked when delivering training to teachers, middle leaders, senior leaders and governors is, “do you have any examples or case studies?”. The aims are that the information within this document will help your school to develop its own inclusive practices even further. The case studies range from primary to secondary schools, from academy trusts to maintained schools and includes examples from Specialist Resource Provision settings too.

[The Effective Inclusive Practice Guide- Standard Formatting](#)

[The Effective Inclusive Practice Guide- Enlarged Formatting](#)

If you have a resource or good practice examples that you’d like to share with colleagues in other schools, please email [hello@theeducationpeople.org](mailto:hello@theeducationpeople.org) or phone: [03456 041 699](tel:03456041699).

## SENCOs and Forums

The Countywide SENCO forum is the formal channel of communication between Kent County Council officers, NHS representatives and SENCOs. This channel is used to inform SENCOs of changes and updates and to engage with SENCOs around focus groups and other consultations. The forums are online and are held termly. There is a primary specific session and a secondary specific session. The agenda for both sessions is identical. The sessions are co-ordinated by The Education People.

All SENCOs are expected to attend and need to register. SENCOs can do so by contacting [Rory.Abbott@theeducationpeople.org](mailto:Rory.Abbott@theeducationpeople.org)

To access slides and content from previous SENCO Forum meetings visit [Countywide SENCO forum updates - KELSI](#)





## ILEs- Inclusion Leaders of Education

ILEs are a new system leader designation in Kent, created through the Inclusion Leadership Programme that ran from September 2022 to March 2024. ILEs were originally developed to support the schools that participated in the Inclusion Leadership Programme, reflecting on the learning gained from peer review and development workshops and facilitated cross-school development plans.

ILEs are now incorporated into the Kent education landscape to provide peer to peer support and challenge and knowledge sharing to further develop inclusive practices in mainstream schools in Kent.

Below are the Inclusion Leaders of Education who have expressed an interest in further involvement beyond the end of the KILP.

Name	School	Role	Email contact
<b>Amanda Flaherty</b>	Sussex Road Primary School	Assistant Head/Inclusion Lead	<a href="mailto:aflaherty@sussex-road.kent.sch.uk">aflaherty@sussex-road.kent.sch.uk</a>
<b>Charlotte McLean</b>	Littlebourne Primary	Senior leader/SENco	<a href="mailto:Mcleanc@littlebourne.Kent.sch.uk">Mcleanc@littlebourne.Kent.sch.uk</a>
<b>Caroline Hawkins</b>	St Mary's Primary Swanley	Senior leader/SENco	<a href="mailto:chawkins@st-marys-swanley.kent.sch.uk">chawkins@st-marys-swanley.kent.sch.uk</a>
<b>Aimee Day</b>	Goudhurst Primary	Head of school/SENco	<a href="mailto:aimee.day@goudhurst-kilndown.kent.sch.uk">aimee.day@goudhurst-kilndown.kent.sch.uk</a>
<b>Graeme Bowden</b>	Fulston Manor School	Senior leader/SENco	<a href="mailto:gbowden@fulstonmanor.kent.sch.uk">gbowden@fulstonmanor.kent.sch.uk</a>
<b>Stella Coulson</b>	Wittersham School	Assistant Head/SENco	<a href="mailto:scoulson@wittersham.kent.sch.uk">scoulson@wittersham.kent.sch.uk</a>
<b>Angie Cox</b>	Herne CE Infant and Nursery School	Senior leader/SENco	<a href="mailto:ACox@herne-infant.kent.sch.uk">ACox@herne-infant.kent.sch.uk</a>
<b>Sharon Dudley</b>	Orchards Academy Swanley	Senior leader/SENco	<a href="mailto:sharon.dudley@orchards-tkat.org">sharon.dudley@orchards-tkat.org</a>
<b>Cassie Young</b>	Folkestone & Hythe, Swale district	Executive Inclusion Officer	<a href="mailto:cassie.young@ocmat.org.uk">cassie.young@ocmat.org.uk</a>
<b>Michelle Anderson</b>	Barham Primary School	Assistant Head/SENco	<a href="mailto:michelle.anderson@barham.kent.sch.uk">michelle.anderson@barham.kent.sch.uk</a>
<b>Matthew Tate</b>	Hartsdown Academy	Headteacher	<a href="mailto:tatem@hartsdown.org">tatem@hartsdown.org</a>

# School Health and Nursing Services

Kent Community Health (NHS) Foundation Trust is commissioned by Kent County Council (KCC) to deliver the [School Public Health Service](#) (primary and secondary) and the Children and Young People's Counselling Service across Kent.

They lead and deliver key elements of the Healthy Child Programme, including the National Childhood Measurement Programme. The services work closely with schools, parents and young people to deliver early intervention and to optimise the health and wellbeing of children and young people aged 5 to 18 years old.

[The Kent School Health](#) service can help with a range of issues young people might face including:

- day and night-time wetting and soiling
- children and teen's sleep
- children and teen's behaviour
- children and teen's healthy lifestyle
- puberty and growing up.

[Referral form into Kent School health](#)

[School Public Health Service - KELSI](#)



## ***NELFT- North East London NHS Foundation Trust:***

[NELFT](#) are the provider in Kent and Medway for Child and Adolescent Mental Health Services, the All Age Eating Disorder Service, the Neurodevelopmental and Learning Disabilities Service as well as the [Mental Health Support Teams](#) which include the Kent Emotional Wellbeing Teams and the Medway Emotional Support Teams. If a person needs urgent or emergency mental health help and support and are not currently receiving care and treatment from the CYP Mental Health Service contact the Single Point of Access on 0800 011 3474 (diverted to out of hours provider after 6pm weekdays and at weekends and bank holidays) NHS 111 Option 2.

## ***KCHFT (Kent Community Health Foundation Trust):***

[KCHFT](#) provide a wide-ranging NHS care for people in the community, in a range of settings including people's own homes, nursing homes, health clinics, community hospitals, urgent treatment centres and mobile units.

Email [kentchft.engagement@nhs.net](mailto:kentchft.engagement@nhs.net) to become involved with engagement opportunities in the community.

## ***EKHUFT (East Kent Hospital University Foundation Trust):***

[EKHUFT](#) provide a local, community service for children and young people aged 0 - 19 years who have, for example, difficulties with:

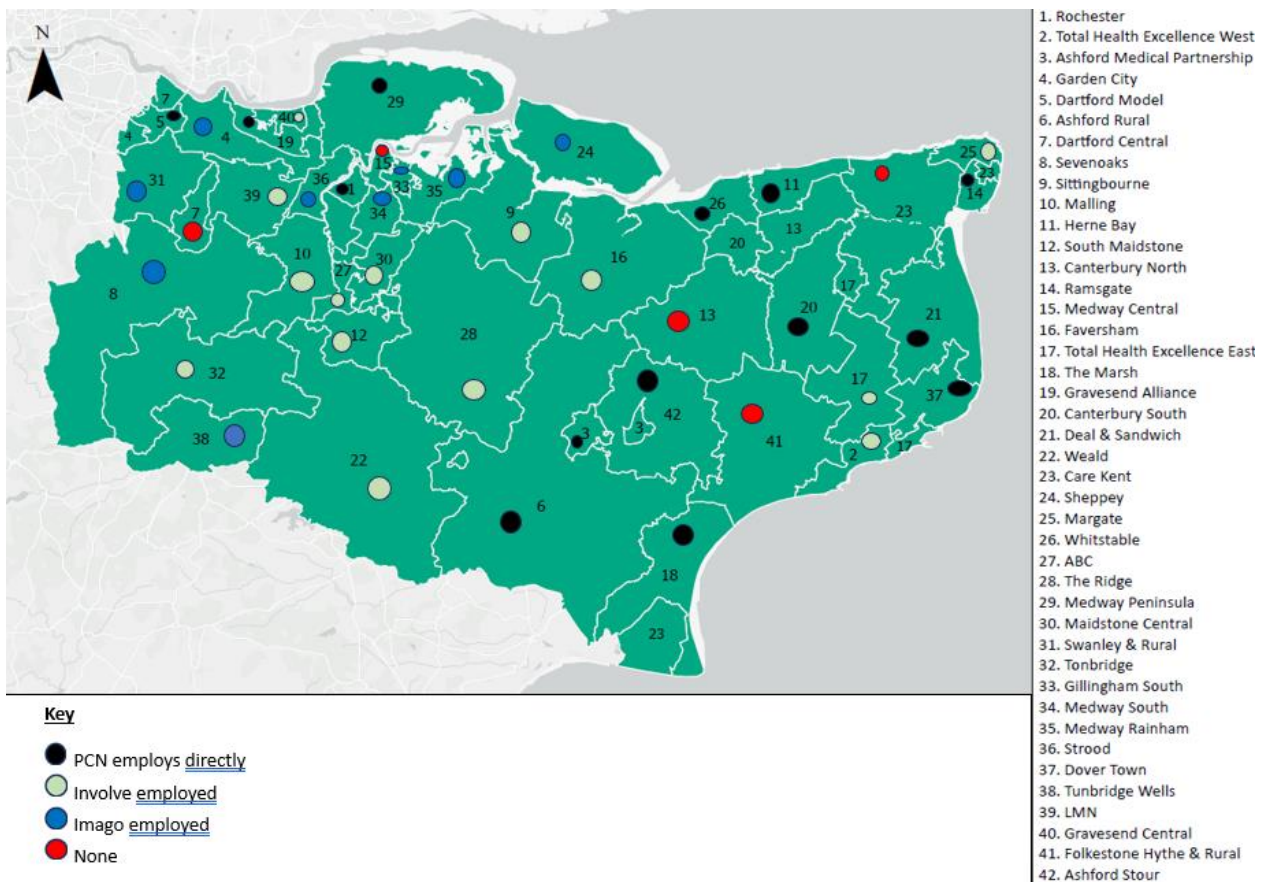
- Talking and communicating
- Eating, drinking or swallowing
- Mobility and posture
- Physical skills such as balance and coordination
- Motor (movement) skills
- Everyday activities e.g. self-care such as getting dressed, using the toilet, preparing and eating meals.

## Council for Disabled Children:

The [Council for Disabled Children](#) is part of the National Children’s Bureau family. As a membership body they provide a collective voice that champions the rights of children, young people and their families and challenges barriers to inclusion.

## (PCN) Primary Care Networks:

[Primary Care Networks](#) include groups of general practices working together, and in partnership with the community, mental health, social care, pharmacy, hospital and voluntary services in their local area, to offer more personalised, coordinated health and social care to the people living in their area. Schools can signpost parents to the local Primary Care Navigators for help in navigating NHS systems.



### ***Kent and Medway Integrated Care Systems:***

The [Kent and Medway Integrated Care System](#) is a partnership of organisations that come together to plan and deliver joined up health and care services to improve the lives of people across Kent and Medway.

Four key purposes:

improving outcomes in population health and healthcare

tackling inequalities in outcomes, experience and access

enhancing productivity and value for money

supporting broader social and economic development

[Mental health and wellbeing](#) services and support.

### ***Involve:***

Involve is a community-led charity and resource, committed to providing holistic health & wellbeing support to people of all ages and circumstances working with partners. Involve help people access the services and support they need, such as housing, healthcare, social care, education, and benefit.

Email at [hello@involvekent.org.uk](mailto:hello@involvekent.org.uk) or complete the [Involve Referral Form](#).

### ***Imago: (Support for Young Carers)***

[Imago](#) aim to promote positive wellbeing through a variety of activities, workshops and respite. The organisation works with school staff and other professionals, to ensure young carers have access to the support they need and know they are not alone. This support for young carers in Kent is crucial to minimise the negative impacts of caring and to access social and educational opportunities and emotional support,

Email [youngcarers@imago.community](mailto:youngcarers@imago.community) or 0300 111 1110

### ***Social and Emotional Mental Health (SEMH) needs:***

Children and young people presenting with social, emotional and mental health ([SEMH](#)) difficulties often struggle to manage their emotions and behaviour. They also find it difficult to make and keep relationships with adults and other children and young adults.

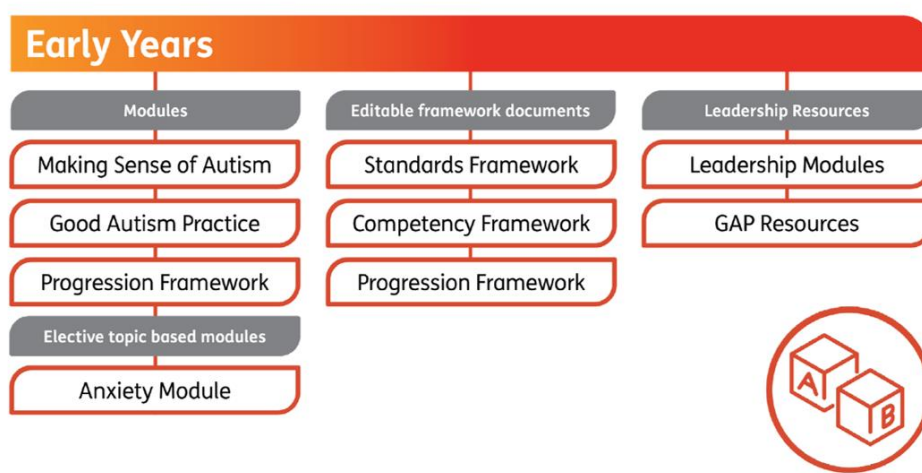
These difficulties may present as becoming withdrawn or isolated or through challenging, disruptive or other concerning behaviour. Children and young people with SEMH often struggle to engage in a learning environment, they often engage in inappropriate behaviour and may benefit from additional support to reach their full potential.

For further support and information on pupils mental health please visit our [Educational Psychology Pages](#), where we have listed our useful links, or [Educational psychology contacts - KELS!](#) who to contact and support services.

# Training Directory

## **Early Years Training: Training Offer:**

Schools and Early Years settings can access [Autism training and development](#)



For any queries or booking request please contact [info@autismeducationtrust.org.uk](mailto:info@autismeducationtrust.org.uk)

**Note: Please allow up to 24hrs for a response via email.**

The SENIF team host a series of live webinars held in each term, [to register](#) or for information on SENIF Webinars visit [Kelsi- SENIF](#).

TEP (The Education People) offer high quality, award-winning training and resources on [Early Years](#), delivered through:

- [Individual CPD training](#) - we offer a vast range of affordable early years online training courses
- [Group training](#) - we offer an extensive suite of group training for whole settings, or for collaborations or childminding groups (maximum of 30 delegates)
- [Visits](#) – a range of support visits from qualified, experienced sector professionals
- [E-Learning](#) & [Pre-recorded Webinars](#) our accessible, on demand online training is ready for you at the touch of a button
- [Resources](#) – a range of ‘hands on’ products to develop and inspire your workforce

# Training Directory

## ***Dingley's Promise Training:***

Dingley's Promise supports children in the Early Years with Special Educational Needs and/or Disabilities (SEN), and their families. Dingley's Promise is a charitable organisation which works across the UK championing inclusion within the Early Years Sector. The charity is partnered with the Council for Disabled Children and The Disabled Childrens Partnership among others. Dingley's Promise is passionate about sharing skills, knowledge and experience to transform the Early Years for children with SEN.

## ***Training Offer:***

The training courses are funded by Comic Relief and are accessible to all Early Years Settings at no cost to the setting. Each course has been designed to enable flexible remote learning and includes webinars and resources for practical application of the learning within daily practice. Current courses include:

Introduction to Early Years Inclusion

- Early Years SEN Transitions
- The Voice of the Child
- Managing Difficult Conversations
- Behaviours That Challenge

To sign up scan the QR code or email [training@dingley.org.uk](mailto:training@dingley.org.uk)



# Training Directory

## STLS:

Core training is offered by the Specialist Teaching and Learning Service across all districts in Kent. All core offer training is offered at least once a year as a minimum in every area but if there is sufficient demand training will be offered in each district. Our Specialist Teaching and Learning Services (STLS) provide education support services for children and young people (0 to 19 years) with sensory and physical disabilities, or complex needs.

## STLS Core Offer

Free online training to all professionals working with hearing and vision impaired and MSI learners is on offer. These courses are delivered by teachers from the STLS Sensory Team.

To enquire about available training, resources and support please use the contact information below:

Contact Name	Contact Details
Clare Taylor (Hearing Impairment)	07811 690527 <a href="mailto:clare.taylor@kent.gov.uk">clare.taylor@kent.gov.uk</a>
Hannah Downs (Multi-Sensory Impairment)	07811 690533 <a href="mailto:hannah.downs@kent.gov.uk">hannah.downs@kent.gov.uk</a>
Lisa Bell (Visual Impairment)	07811 690424 <a href="mailto:lisa.bell@kent.gov.uk">lisa.bell@kent.gov.uk</a>



## Specialist Teachers

Area	Contact Name	Contact Details
<p>West and North Kent</p> <ul style="list-style-type: none"> <li>• Dartford</li> <li>• Gravesham</li> <li>• Maidstone</li> <li>• Sevenoaks</li> <li>• Tonbridge and Malling</li> <li>• Tunbridge Wells</li> </ul>	<p>Sue Holder (Hearing Impairment)</p>	<p><u>07811690561</u> <u>sue.holder@kent.gov.uk</u></p>
<p>East and South Kent</p> <ul style="list-style-type: none"> <li>• Ashford</li> <li>• Canterbury</li> <li>• Dover</li> <li>• Folkestone and Hythe</li> <li>• Swale</li> <li>• Thanet</li> </ul>	<p>Jo Clarke (Hearing Impairment)</p>	<p><u>07811690106</u> <u>jo.clarke@kent.gov.uk</u></p>

## Physical Disability

### **Training Offer:**

The following costed training online

The following costed training online:	
Care Plans and Risk Assessments for Children and Young People with Physical Disabilities (Nurseries and Schools)	Virtual 3 per year
Fine Motor Difficulties and Alternative Methods of recording curriculum work (Schools)	Virtual 2 per year
Developmental Coordination Difficulties (Schools)	Virtual 2 per year
Toilet Troubles (Nurseries and Schools)	Virtual 2 per year

In person Moving and Handling training, currently in 2 locations several times a year. This is for staff physically supporting the transfers of learners with physical disabilities and on PD STLS case list. It is a generic one-day course that covers:

- Legislation
- Biomechanics of the body
- Back Awareness and back care
- Safer Principles of M&H
- Risk assessments
- Practical use of equipment and techniques including facilitated transfers, safe lifting and wheelchair pushing.

The course complements the work of Physiotherapists and Occupational Therapists who will have modelled safe practise with the specific child.

Please email [pdteam@kent.gov.uk](mailto:pdteam@kent.gov.uk) to book training, to book onto a PD Surgery or for a referral request form.

**Note: please allow up to 5 working days for a response via email**

## Hearing Impairment

### *Training Offer:*

For learners receiving direct support by the STLS Sensory Service, settings, schools and colleges will be offered free bespoke training. Generic training around hearing impairment to education colleagues in a variety of roles to ensure the needs of hearing-impaired learners are understood.

To access the free online training offer, please discuss this with your specialist teacher in the first instance. For other training enquiries, please contact:

**Note: Please allow up to 5 working days for a response via email.**

For queries email [hivimsi@kent.gov.uk](mailto:hivimsi@kent.gov.uk) or contact one of our Specialist Teachers above.



## Visual Impairment

### *Training Offer:*

For learners receiving direct support by the STLS Sensory Service, settings, schools and colleges will be offered free bespoke training. Generic training about vision impairment to education colleagues in a variety of roles to ensure the needs of vision impaired learners are understood.

To access the free online training offer, please discuss this with your Specialist Teacher in the first instance.

For all Vision Impairment referrals, please contact:

Jennie Russell: [0781169036](tel:0781169036) / [jennie.russell@kent.gov.uk](mailto:jennie.russell@kent.gov.uk)

**Note: Please allow up to 5 working days for a response via email.**

Referrals will be processed within 5 working days of receipt during term time only. If referrals are received during school holidays, these will be processed as soon as possible after the new term begins.



## Multi-Sensory Impairment



### ***Training Offer:***

For learners receiving direct support from the STLS Sensory Service, their settings, schools and colleges will be offered free bespoke training. Sessions can be tailored to the needs of individual learners, as well as covering whole school or class approaches to supporting the learner as appropriate.

More information about all opportunities can be supplied by your Specialist Teacher for MSI. To access the free online training offer, please discuss this with your Specialist Teacher in the first instance.

For all MSI referrals, please contact: Hannah Downs: 07811 690533 / [hannah.downs@kent.gov.uk](mailto:hannah.downs@kent.gov.uk)

**Note: Please allow up to 5 working days for a response via email.**

Referrals will be processed within 5 working days of receipt during term time only. If referrals are received during school holidays, these will be processed as soon as possible after the new term begins.

## Bespoke Training

For more information on further bespoke training, further information on Cognition and Learning training and SEMH please click on the link applicable to your district below.

### **North Area:**

DARTFORD: Rowhill School

GRAVESHAM: Ifield Smile Centre

SEVENOAKS: Valence School

MAIDSTONE: Five Acre Wood

### **East Area:**

CANTERBURY: St. Nicholas School

SWALE: Meadowfield School

THANET: Laleham Gap

### **South Area:**

ASHFORD: Goldwyn School

DOVER: Aspen Smile Centre

FOLKSTONE & HYTHE: The Beacon School

## Information Advice Support Kent (IASK) Workshops

[IASK](#) a free, confidential and impartial special educational needs and disabilities information, advice and support service. IASK works with children and young people (up to age 25) and their parents/carers. Staff and volunteers are independently trained in the law around special educational needs.

[IASK Workshop](#) details via MS Team:

- SEN Support in the Early Years and Transition to Reception Year
- Review Meetings
- Special Educational Needs (SEN) support in mainstream schools and colleges
- Mental capacity and Decision-Making Post 16
- Options for Post 16 transition
- Getting the best out of meetings

Email the team at [iask@kent.gov.uk](mailto:iask@kent.gov.uk) or telephone the team helpline 03000 41 3000.



## Virtual School Kent (VSK) Training

[Virtual School Kent](#) acts as a local authority champion to promote the progress and educational attainment of children and young people who are or who have been in care so that they achieve educational outcomes comparable to their peers. Ensuring that they receive a high-quality education is the foundation for improving their lives.

### Training Offer:

Current training opportunities offered by VSK:

- Training for staff supporting Unaccompanied Asylum-Seeking Children
- VSK Area Designated Teacher meetings
- Personalised Education Plan (PEP) Training
- New Designated Teacher consultations for Out of County Schools with Kent Children in Care
- New Designated Teacher Consultations For Schools With Previously Looked After Children
- New Designated Teacher Training For Schools With Children in Care

[VSK Training, bookings and enquiries.](#)





## Kent Education Evidence (KEE) Hub Training

[The Kent Education Evidence Hub](#) aims to act as a central point of information about training that is available to schools in Kent, and which will support colleagues to engage with evidence.

The Hub will work with local partner organisations, such as Research Schools, Teaching School Hubs, Curriculum hubs to showcase the training that they deliver in Kent. We will work with regional and national partners to signpost to their training. Wherever possible we will coordinate Kent-based delivery of relevant programmes.

### Training Offer:

Evidence champion training:

- Session 1: What is an Evidence Champion? Why do schools need an Evidence Champion?
- Session 2: What sources of evidence are available and how can we evaluate their usefulness?
- Session 3: How can schools effectively mobilise the research evidence and evaluate its impact?

KARS: From Mitigation to Success: Improving Outcomes for Disadvantages and Vulnerable Learners

The programme supports schools to 'drill down' further into the specific issues they are facing with regards to tackling disadvantage and guides them to adapt their approaches accordingly.



## Kent Community Learning and Skills

[Kent Community Learning and Skills](#) provide almost 4,000 extensive, vibrant, diverse and challenging courses across Kent.

[Family Learning](#) run free courses designed for parents, children and carers to share their learning experience in an exciting and interactive learning environment. They provide courses focusing on creativity, English, maths and language (ESOL), first aid, health and wellbeing, STEM and parenting. Courses can be delivered in local venues or [online](#).

The parenting courses support families where children may display challenging behaviour or other difficulties. The courses are not about being a perfect parent - more about discovering that other people's experiences are the same. Parenting courses are not intended to be interventions and the tutor will not tell parents 'How it's done'. Rather, they are discussion-based with time to share experiences, ideas, concerns and possible solutions. The wide-ranging courses are designed to enhance wellbeing and offer high-quality opportunities to discover and develop interests which enrich quality of life.

[Response](#) is a specialist engagement programme within Kent Adult Education working with a range of partners including community groups, charities and other organisations, in local venues to provide first steps opportunities and work-related short courses, designed to help participants gain employment, become a successful volunteer or to restart their journey into further learning. You are welcome to join a Response course if you are 19 or over, low waged or unwaged. We try to target Response in the areas of greatest need within Kent. The programme in each district area will be tailored to participants' needs, aspirations and employment opportunities.

These local and online programmes support the core aims of Kent County Council set out in "Framing Kent's Future:" to help the Kent economy grow, to put the citizen in control and to tackle disadvantage. Programmes will contribute to key public policy priorities in areas such as health and wellbeing, support for families, volunteering, community integration and resilience, and employment.

Kent Community Learning and Skills work with local communities across the KCC area to provide a vibrant, diverse and challenging range of learning opportunities. Programmes in each district area will comprise numerous elements planned in balance to meet local needs.

[Bookings, enquiries and callback Requests.](#)



## Commissioned Services

TEP The Education People- *A one-stop solution for education services, supporting the full age range from early years to young adults.*

Many of the training available are covered and paid for through KCC and performed through TEP, as these essential training kits are in line with our KCC vision and goals. Training outside of this jurisdiction are chargeable through TEP. A list of Kent Vision Training:

- Core Offer Training
- SEN Training

For further information head to [The Education People](#).

There is also support available for [Post 16 Transitions](#) through Kent Choices.

If you have any training/CPD needs with regards to SEN, please contact Rory Abbott [rory.abbott@theeducationpeople.org](mailto:rory.abbott@theeducationpeople.org)

