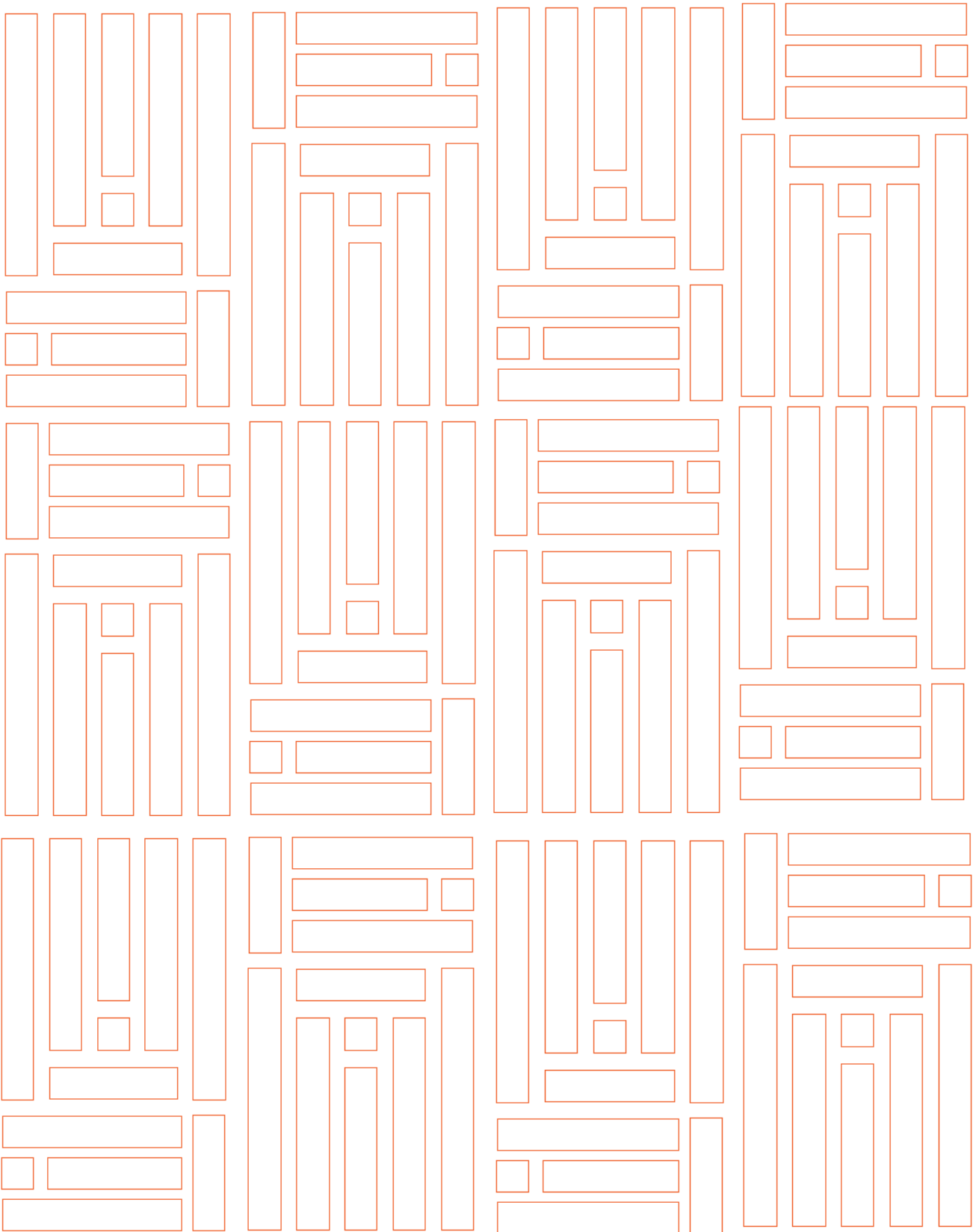


Making Figures Speak For Themselves

Key Stage 4





Contents

1. Introduction and the significance of data
2. Key questions to be asked
3. Headline results by School, School Type, Prior Attainment band, LA and National
4. Additional Headline results by School, School Type, Prior Attainment band, LA and National
5. Trends by School, LA and National
6. Similar Schools - FSM, Disadvantaged, Pupil Premium, SEN
7. School Performance - Characteristics by Gender
8. Kent Performance - Characteristics by Gender
9. School Performance by Prior Attainment - KS2 Subject to KS4 Subject
10. Transition Matrices
11. Progress Scatterplots - Prior Attainment and Progress
12. School Static and Contextual Data
13. Ofsted Inspection Outcomes

1. Introduction and the significance of data

Introduction

This school performance profile pack has been produced to help Headteachers, staff and Governors review the performance of their school in end of key stage tests.

On the next page there are a set of questions to use when considering the reports. They provide an analysis of the school's results relative to National data and trends over recent years. They also provide comparisons with the LA, School Type and Prior Attainment Band.

The 2018 results used in this analysis are from DfE Performance Tables checking dataset. 2017 and 2016 attainment data where available, is Published DfE Performance Tables data, along with Kent and National figures from DfE Statistical First Releases.

Interpreting a school's Progress 8 score

Progress 8 scores are centred around 0, with most schools within the range of -1 to +1.

- A score of 0 means pupils in this school on average do about as well at KS4 as those with similar prior attainment nationally.
- A positive score means pupils in this school on average do better at KS4 as those with similar prior attainment nationally.
- A negative score means pupils in this school on average do worse at KS4 as those with similar prior attainment nationally.

A negative score does not mean that pupils did not make any progress; rather it means they made less progress than other pupils nationally with similar starting points. For more information, see DfE guidance available via the following link.

<https://www.gov.uk/government/publications/school-and-college-performance-tables-statements-of-intent>

Source: DfE; Progress 8, How Progress 8 and Attainment 8 measures are calculated

The Significance of Data

The use of performance data in schools has increased both in volume and importance over recent years.

The purpose of any reports like these that provide information about pupil performance is not to provide definitive answers but to raise questions, and focus discussion. In some instances, e.g. where pupil numbers are small, the data may not be particularly reliable and should be treated with caution.

Floor standard

The school performance measures published in performance tables are used to identify schools that are failing to meet minimum performance expectations or 'floor standards'.

In 2018, a school or college will be below the secondary floor standard if its Progress 8 score is below -0.5, unless the confidence interval suggests that the school's underlying performance may not be below average.

Coasting

The coasting definition is based on three years of data, using the same performance measure that underpin the floor standards. In line with regulations, in 2018 a secondary school will fall within the coasting definition if, based on revised data for all of 2016, 2017 and 2018: In 2016, 2017 and 2018 the school's Progress 8 score was below -0.25

Schools will be excluded from the coasting measure if:

They have fewer than 6 pupils at the end of key stage 4

or

Fewer than 50% of pupils have key stage 2 assessments that can be used as prior attainment in the calculations of Progress 8

or

The school closes within the academic year (except if it reopened as a converter academy)

Source: DfE; Progress 8, How Progress 8 and Attainment 8 measures are calculated

2. Key Questions To Be Asked

School Key Stage 4 Profile Narratives

KS4 Current Year Performance Headline results

The achievement of pupils at your school is compared with that of all pupils in schools of the same type (i.e. Grammar, High/Wide Ability or Academy (Grammar), Academy (High/Wide), Prior Attainment Band, the LA and nationally for Progress 8 Score, Progress 8 Score (Capped), Attainment 8 Score, % English and mathematics - Strong Pass, English Baccalaureate Score.

KS4 Additional Headline results

The achievement of pupils at your school is compared with that of all pupils in schools of the same type, Prior Attainment Band, the LA and Nationally for:

Progress 8 Score: Average Score, Lower Confidence Interval, Upper Confidence Interval

Attainment 8 Score: Achieving the required elements

% English and mathematics: Strong Pass, Standard Pass

English Baccalaureate: APS, % Grade 5 or above, % Grade 4 or above

% English Baccalaureate Elements: English Grade 5 or above, English Grade 4 or above, mathematics Grade 5 or above, mathematics Grade 4 or above, Science Grade 5 or above, Science Grade 4 or above, Humanities Grade 5 or above, Humanities Grade 4 or above, Language Grade 5 or above, Language Grade 4 or above

Key Questions

** How does the achievement of pupils in our school compare with other schools of the same School Type, Prior attainment Band, LA and National?*

** Are there any differences between the indicators?*

KS4 Trend Performance

The achievement of the pupils at your school is shown for the last three years and compared with that of the same School Type, Prior Attainment Band and the performances in the LA and Nationally for Progress 8 Score, Attainment 8 Score, % English and mathematics - Strong and Standard Pass, % English Baccalaureate - Grade 4 or above and Grade 5 or above. See the DfE 2018 Schools and College Performance Tables Statement of Intent Accountability.

Key Questions

** Is the achievement of our pupils rising, falling or remaining level over the three years? Why is that?*

** How does the school's "trend" compare with the "trend" of your School Type, Prior Attainment Band, the LA and Nationally?*

KS4 Similar Schools Comparison

This report compares your school's performance for those pupils achieving the required elements in Attainment 8, Strong and Standard pass in '% Achieving English and mathematics', '% Achieving English Baccalaureate' with similar characteristics. English Baccalaureate APS This has been based on the percentage of Year 11 FSM Eligible pupils, Year 11 FSM Ever pupils, Year 11 Disadvantaged pupils, Year 11 Pupil Premium pupils and Year 11 SEN pupils in each school. Schools have been grouped in bandings that are based on Kent quintiles.

Key Questions

** How does your school's performance compare with the average for similar schools?*

** Are there any subjects in which your school does particularly well / less well? Why is that?*

KS4 performance Pupil Characteristics by Gender (Vulnerable groups)

These tables show pupils' Attainment 8 scores, along with % Achieving English and mathematics, % Achieving English Baccalaureate, English Baccalaureate Score in 2018. The pages show the results split by pupils' characteristics by gender. LA tables are also produced.

Please be aware that some of these groups contain small numbers of pupils; these results should therefore be treated with caution.

All contextual information about these pupils has been taken from the January 2018 School Census.

Term of birth is based on children born in the Autumn (September to December), Spring (January to April) and Summer (May to August) terms and will include any pupils who are outside the expected national curriculum year group for their age.

2. Key Questions To Be Asked

Key Questions

- * Are there any particular groups that are performing significantly below what you would expect? Is the school diminishing the difference between the attainment of disadvantaged pupils and the attainment of all pupils in the cohort as a whole?*
- In which subjects are there significant differences in attainment within / between the groups?*
- How does the performance of your school compare to the LA?*
- * What are the reasons for this? Are they significant?*

KS2 Prior Attainment Bands

Prior Attainment Bands are calculated by taking an average of the KS2 APS of the incoming Year 7 pupils to each Secondary school and ranking them from highest to lowest. Schools with the highest average KS2 APS Prior Attainment for their Year 7 pupils are in Prior Attainment Band 1 and those with the lowest APS are in Prior Attainment Band 6. The Year 7 cohort grouping is followed through to when pupils take their KS4 exams in Year 11 and are used as a grouping in the Making Figures Speak for Themselves profiles. This additional grouping allows schools to compare against similar schools further to the school Sub Types of Grammar, High and Wide Ability schools. Prior Attainment Bands are calculated every year and schools may change their grouping, depending on the KS2 prior attainment of that year's group of pupils in relation to other schools.

School Performance by Prior Attainment - KS2 Subject to KS4 Subject

These tables show KS4 Progress 8 and Attainment 8 outcomes for Overall, English and Maths by KS2 prior attainment low, middle and high bandings. The cohort is split into All Pupils, Disadvantaged Pupils and Pupil Premium Pupils. The School's Score is compared against the National Score.

Transition Matrices

These tables describe the distribution of pupil outcomes at KS4 for KS2 prior attainment groups in English and mathematics for all pupils and disadvantaged pupils.

Progress scatterplots by progress and attainment

This shows pupils' KS4 progress and attainment by subject and by their KS2 prior attainment, using the fine points score.

Key Questions

- How much progress did individual disadvantaged and SEN pupils make?*
- How did it vary for different prior attainment groups?*
- Was the progress very low or very high for any pupils?*

School Contextual Details

This table shows the contextual characteristics of the school over the last three years and is based on data collected from the January School Census.

Key Question

- Have the characteristics of the school changed over the years?*

Ofsted Inspection Outcomes

This table shows the individual judgements from the school's last Ofsted inspection together with their Main Findings and Recommendations as at 31st August 2018.

Key Question

- What is being done to address any recommendations made by Ofsted?*

Follow up questions

- How effectively has the school identified the main barriers faced by different disadvantaged pupils, in particular those with high prior attainment and those with low prior attainment who need to catch up?*
- How was the pupil premium funding spent to address the different barriers and how effective were the various approaches?*
- What is being put into place to address the issues identified by the data?*
- How can governors support other areas that require improvement?*

3. Headline Results by School, School Type, Prior Attainment Band, LA and National

Key Stage 4 2017/18

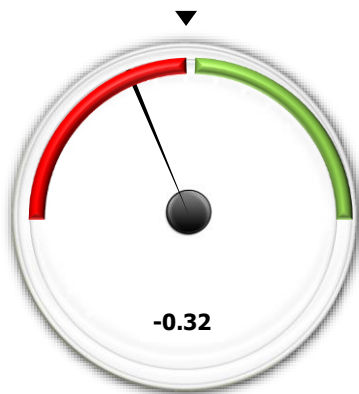
Expected Standard	KS4 Number of pupils	School	School Type	Prior Attainment Band	LA (State Funded Schools)	National (State Funded Schools)
Progress 8 Score	145	-0.32	-0.37	-0.23	-0.10	-0.03
Progress 8 Score CAPPED	145	-0.32	-0.36	-0.23	-0.09	-0.02
P8 Lower Confidence Interval	145	-0.53	-0.42	-0.28	-0.12	
P8 Upper Confidence Interval	145	-0.11	-0.32	-0.18	-0.08	
Attainment 8 Score	146	38.9	37.7	39.5	46.8	46.4
% English and mathematics - Strong Pass	146	12.3	21.3	24.1	43.8	43.0
English Baccalaureate Score	146	3.20	3.00	3.24	4.09	4.03

To achieve the English Baccalaureate, pupils must achieve the required standard in each of the following 5 subject areas: a) English b) mathematics c) Science d) Humanities e) Language

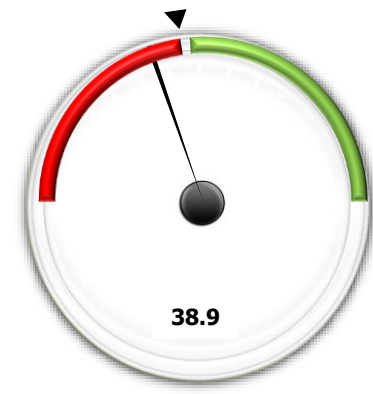
A school is above average if its Progress 8 score is above 0 and the lower confidence interval is above 0. Similarly, a school is below average if its Progress 8 score is below 0 and the upper confidence interval is below 0.

Floor Standard	<i>In 2018, a school or college will be below the secondary floor standard if its Progress 8 score is below -0.5, unless the confidence interval suggests that the school's underlying performance may not be below average.</i>	<i>Above</i>
Coasting	<i>The coasting definition is based on three years of data where in 2016, 2017 and 2018 the school's Progress 8 score was below -0.25</i>	<i>Yes</i>

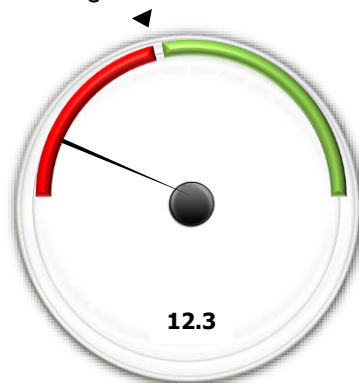
Progress 8 Score



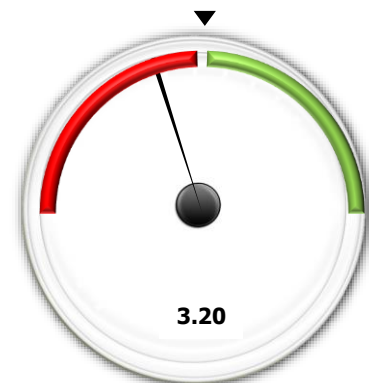
Attainment 8 Score



% attaining a Strong Pass in English and mathematics

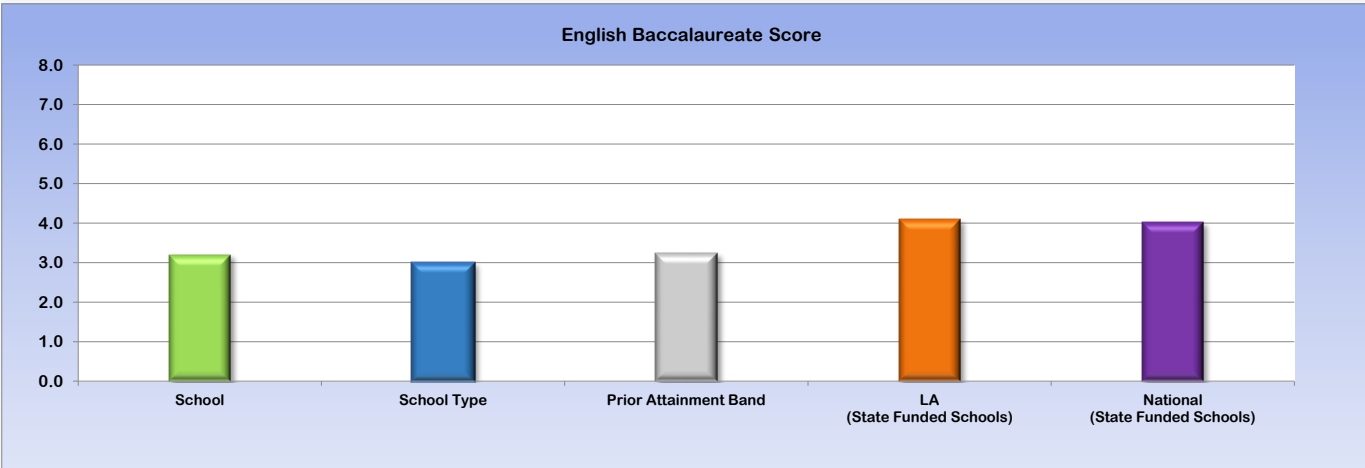
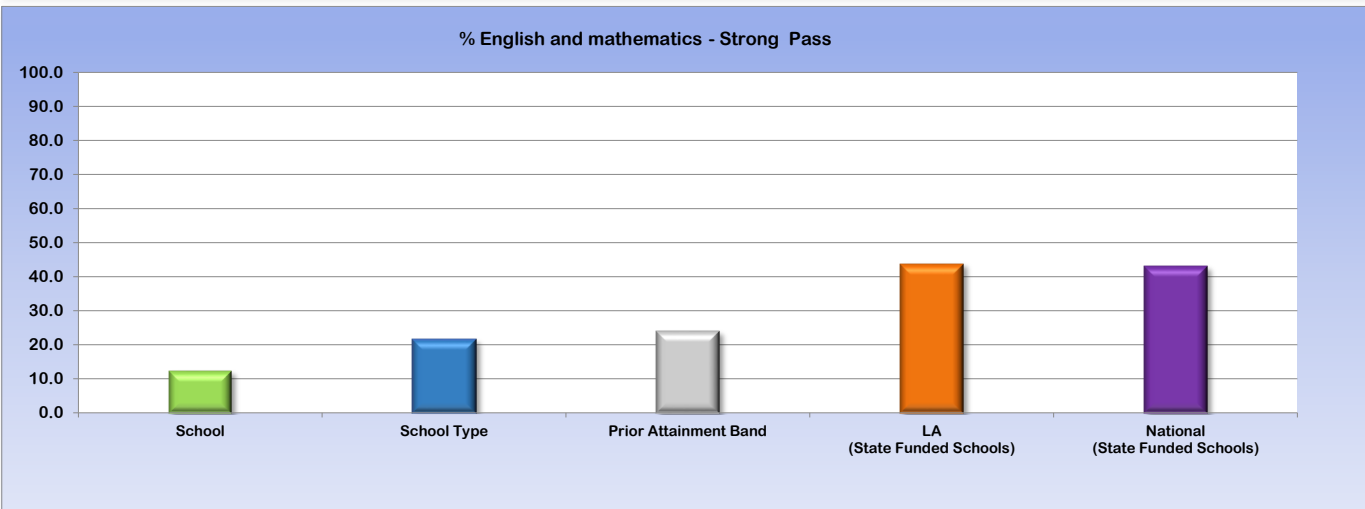
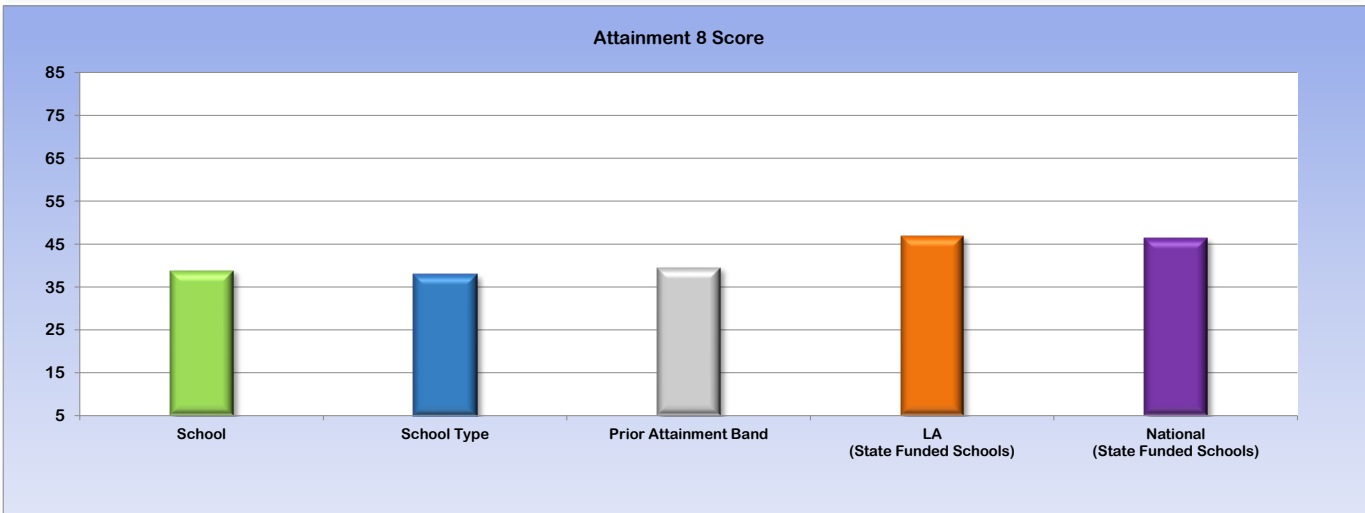
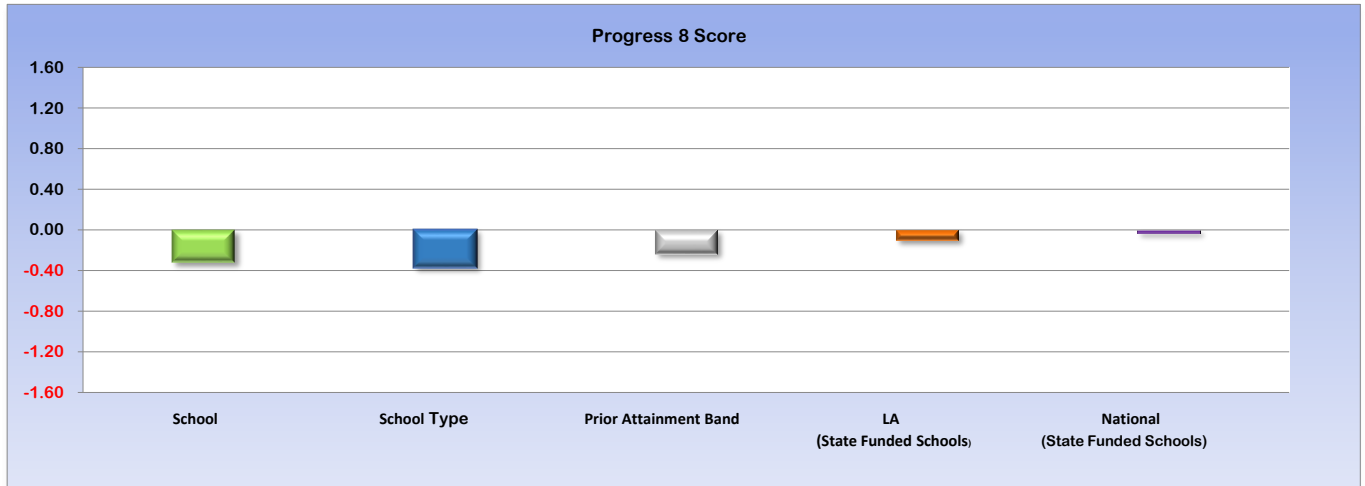


English Baccalaureate Score



3. Headline Results by School, School Type, Prior Attainment Band, LA and National

Key Stage 4 2017/18



4. Additional Headline results by School, School Type, Prior Attainment band, LA and National

Key Stage 4 2017/18

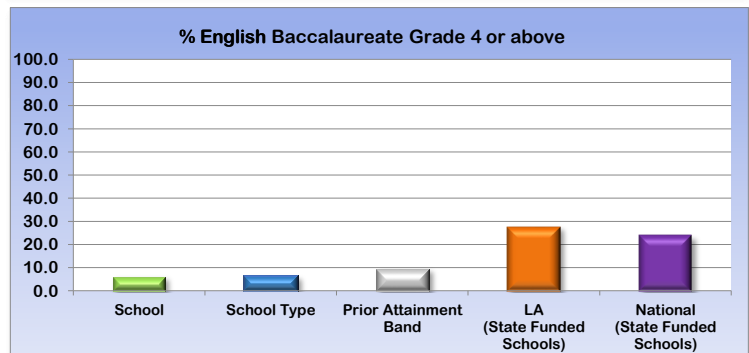
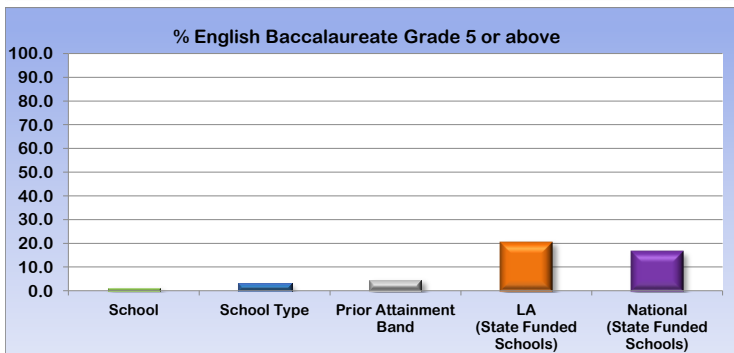
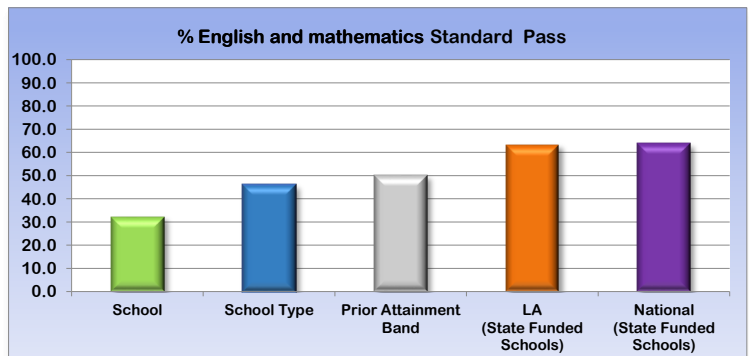
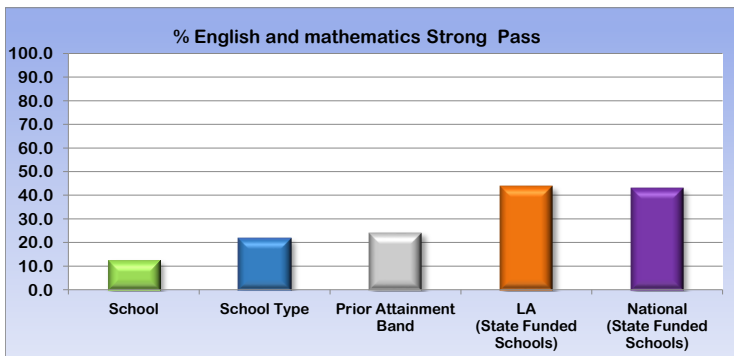
Progress 8	Measure	KS4 Number of pupils	School	School Type	Prior Attainment Band	LA (State Funded Schools)	National (State Funded Schools)
	Average Score	145	-0.32	-0.37	-0.23	-0.10	-0.03
	P8 Lower Confidence Interval	145	-0.53	-0.42	-0.28	-0.12	
	P8 Upper Confidence Interval	145	-0.11	-0.32	-0.18	-0.08	

Attainment 8 Score	Measure	KS4 Number of pupils	School	School Type	Prior Attainment Band	LA (State Funded Schools)	National (State Funded Schools)
	Achieving the required elements	146	38.9	37.7	39.5	46.8	46.4

English and mathematics	Measure	KS4 Number of pupils	School	School Type	Prior Attainment Band	LA (State Funded Schools)	National (State Funded Schools)
	Strong Pass	146	12.3	21.3	24.1	43.8	43.0
	Standard Pass	146	32.2	45.9	50.0	63.3	63.9

English Baccalaureate	Measure	KS4 Number of pupils	School	School Type	Prior Attainment Band	LA (State Funded Schools)	National (State Funded Schools)
	Average Point Score	146	3.20	3.00	3.24	4.09	4.03
	Grade 5 or above	146	1.4	2.9	4.6	20.6	16.6
	Grade 4 or above	146	6.2	6.3	9.4	27.7	24.0

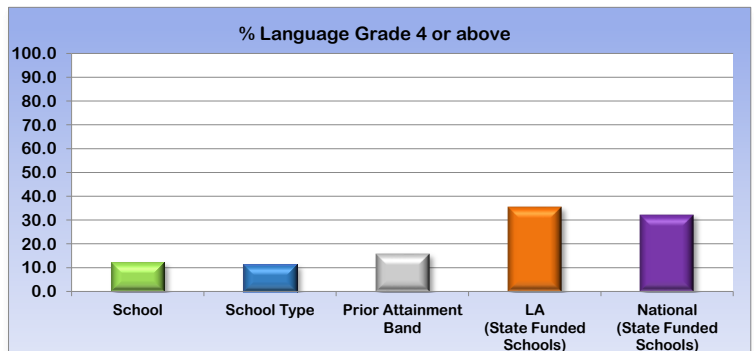
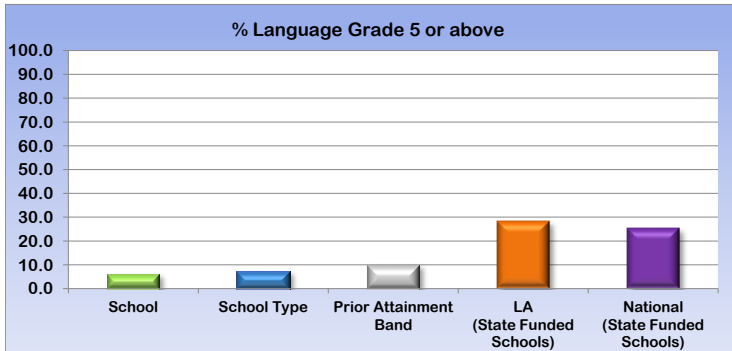
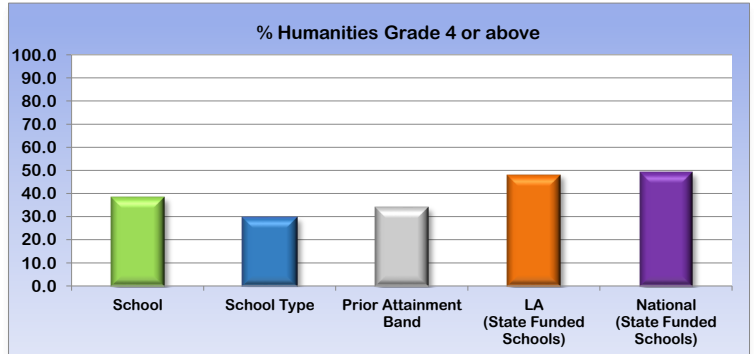
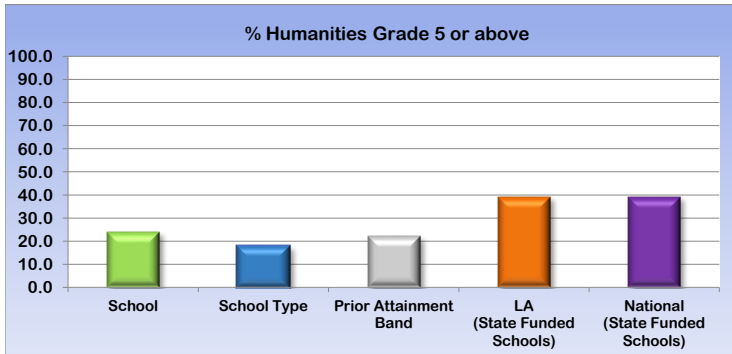
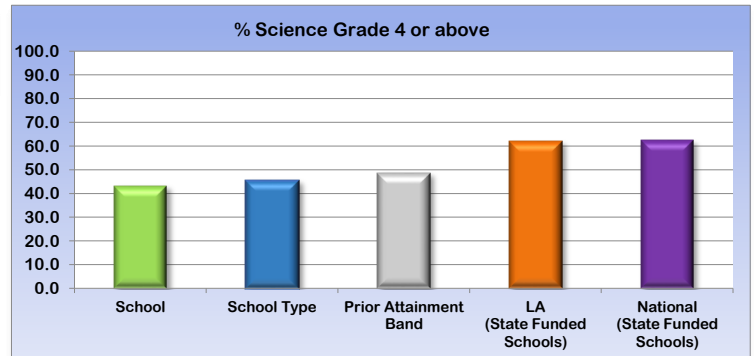
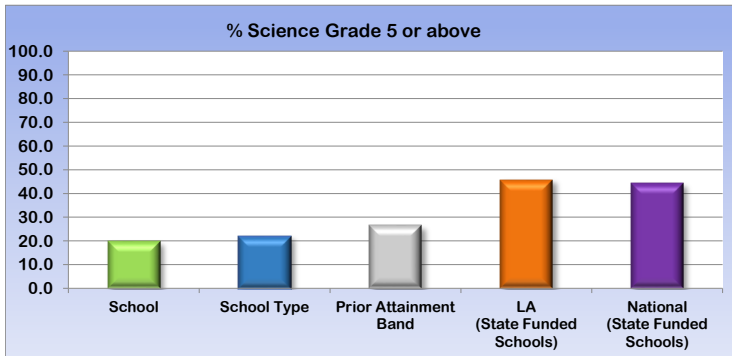
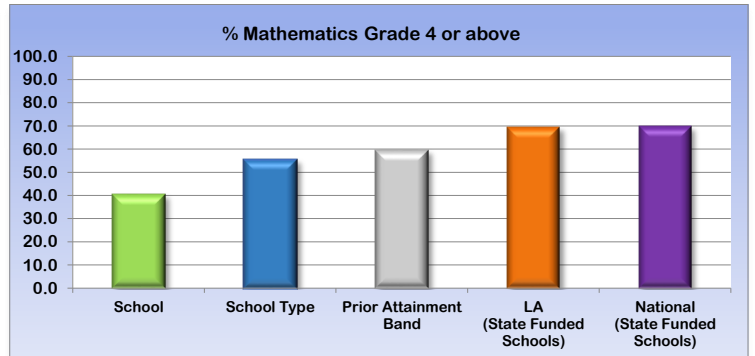
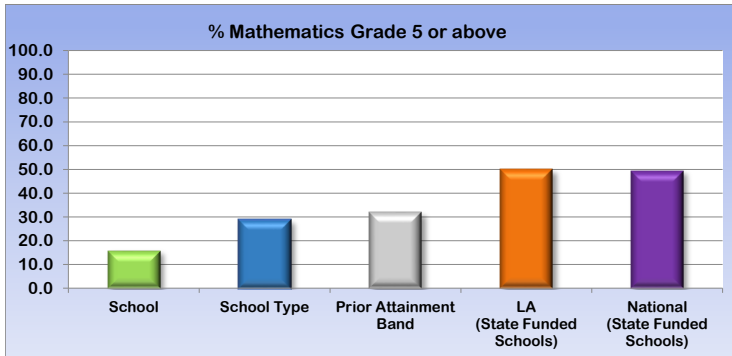
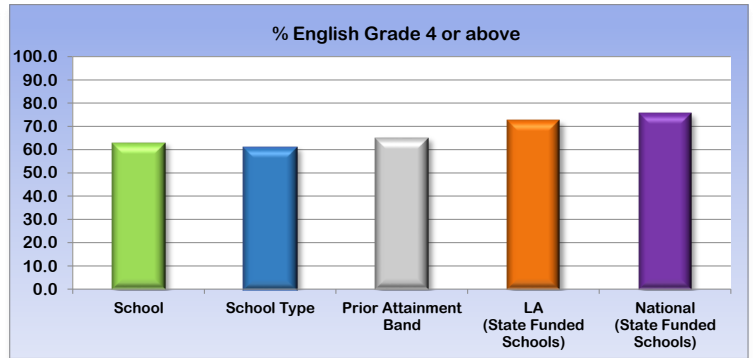
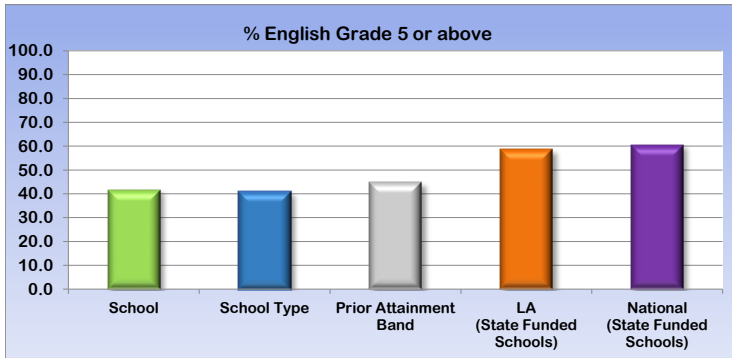
English Baccalaureate Elements	Measure	KS4 Number of pupils	School	School Type	Prior Attainment Band	LA (State Funded Schools)	National (State Funded Schools)
	English Grade 5 or above	146	41.8	40.9	44.9	58.6	60.5
	English Grade 4 or above	146	63.0	60.9	65.0	72.6	75.7
	Mathematics Grade 5 or above	146	15.8	28.7	32.0	50.0	49.4
	Mathematics Grade 4 or above	146	40.4	55.3	59.4	69.3	69.7
	Science Grade 5 or above	146	19.9	21.8	26.6	45.9	44.3
	Science Grade 4 or above	146	43.2	45.4	48.8	62.1	62.4
	Humanities Grade 5 or above	146	24.0	17.9	22.1	39.1	39.1
	Humanities Grade 4 or above	146	38.4	29.3	34.0	48.1	49.1
	Language Grade 5 or above	146	6.2	7.1	10.0	28.4	25.3
	Language Grade 4 or above	146	12.3	11.2	15.8	35.5	32.1



4. Additional Headline results by School, School Type, Prior Attainment band, LA and National

Key Stage 4 2017/18

English Baccalaureate Elements



5. Trends by School, LA and National

Key Stage 4 2017/18

Progress 8	2015-16			2016-17			2017-18		
	Average Score	Confidence Interval		Average Score	Confidence Interval		Average Score	Confidence Interval	
		Lower	Upper		Lower	Upper		Lower	Upper
School	-0.31	-0.48	-0.13	-0.38	-0.57	-0.17	-0.32	-0.53	-0.11
LA (State Funded Schools)	-0.04	-0.05	-0.02	-0.11	-0.13	-0.09	-0.10	-0.12	-0.08
National (State Funded Schools)	-0.03			-0.03			-0.03		

Attainment 8	2015-16	2016-17	2017-18
	Average Score	Average Score	Average Score
School	45.2	38.3	38.9
LA (State Funded Schools)	50.3	46.3	46.8
National (State Funded Schools)	49.9	46.4	46.4

% English and mathematics	2015-16	2016-17		2017-18	
	A*-C	Standard Pass	Strong Pass	Standard Pass	Strong Pass
School	56.2	45.0	19.0	32.2	12.3
LA (State Funded Schools)	63.7	61.9	42.3	63.3	43.8
National (State Funded Schools)	63.3	64.2	42.9	63.9	43.0

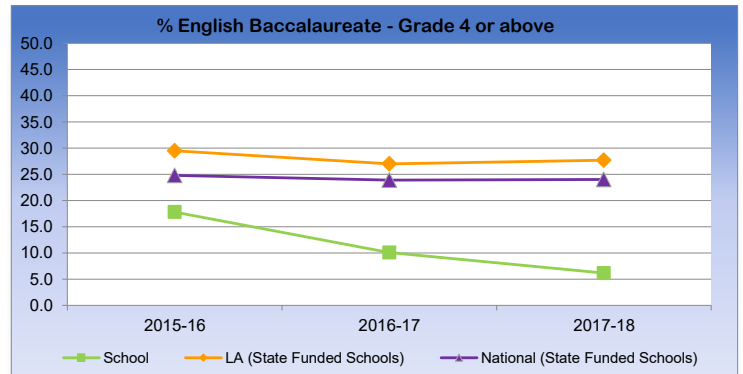
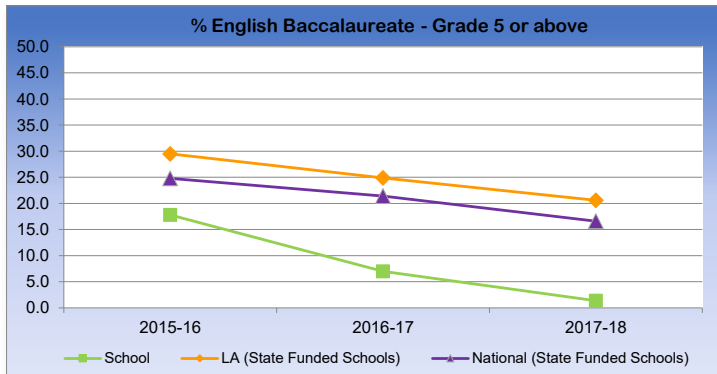
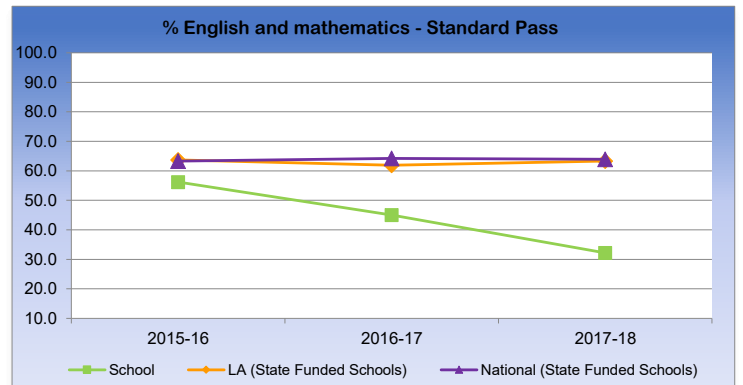
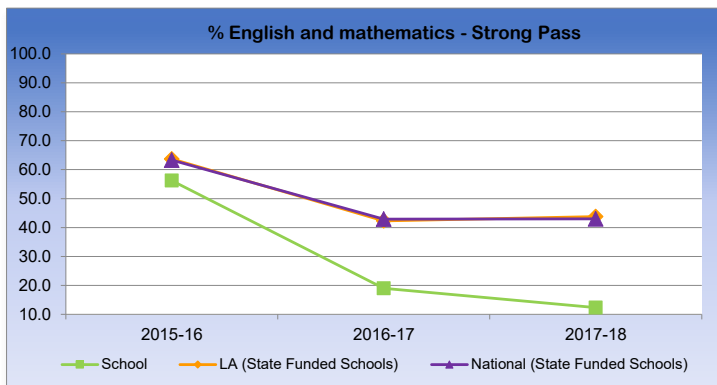
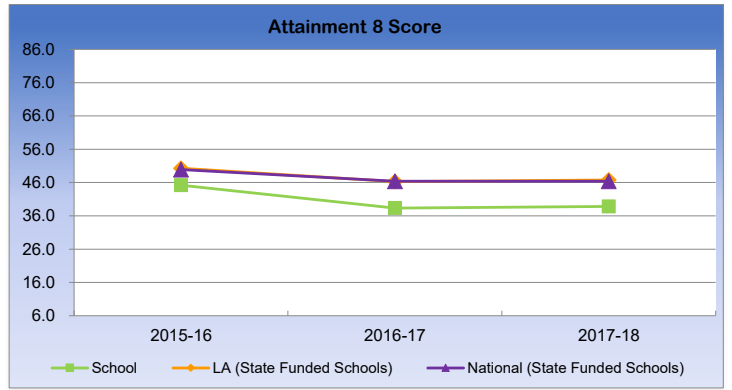
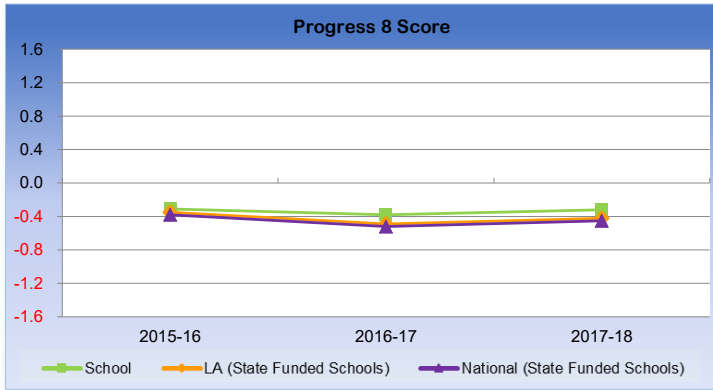
% English Baccalaureate	2015-16	2016-17		2017-18	
	A*-C	Grade 4 or above	Grade 5 or above	Grade 4 or above	Grade 5 or above
School	17.8	10.1	7.0	6.2	1.4
LA (State Funded Schools)	29.5	27.0	24.9	27.7	20.6
National (State Funded Schools)	24.8	23.9	21.4	24.0	16.6

English and Mathematics outcomes are calculated as a percentage of pupils at the end of key stage 4. From 2015/16, to meet the English requirement of the A*-C in English and maths attainment measure, a C in either English language or English literature counts and there is no requirement to take both. In 2016/17, following the introduction of the reformed 9 to 1 GCSEs in English, a grade 5 or above in either English language or English literature counts and there remains no requirement to take both in order to achieve a pass. The 9-4 pass shows pupils who achieved a grade 4 or above in either English language or English literature

source: DfE

5. Trends by School, LA and National

Key Stage 4 2017/18



6. Similar Schools

Key Stage 4 2017/18

KS4 Attained

Standard	Measure	School	FSM Eligible	FSM Ever 6	Disadvantaged	Pupil Premium	SEN
			Y11 FSM ELIGIBLE	Y11 FSM EVER	Y11 DISADVANTAGED	Y11 PUPIL PREMIUM	Y11 SEN
			10-15%	15-22%	15-22%	17-25%	4-7%
Attainment 8 Score	Achieving the required elements	38.9	39.0	41.0	42.2	42.5	52.0
% achieving English and mathematics	Strong Pass	12.3	24.2	26.6	29.4	29.9	51.2
	Standard Pass	32.2	49.2	52.6	55.5	55.5	69.4
% achieving English Baccalaureate	Grade 5 or above	1.4	4.5	5.7	7.3	7.2	25.9
	Grade 4 or above	6.2	9.6	11.1	13.6	13.1	33.3
English Baccalaureate Score		3.20	3.18	3.39	3.55	3.53	4.64

7. School Level Pupil Characteristics by Gender

Key Stage 4 2017/18

Attainment 8 Score

		Attainment 8 Score							
		Number of Pupils	Each pupil as %	Girls	Boys	All	Girls	Boys	
All Pupils		146	0.7	73	73	38.9	41.2	36.5	
FSM Eligible	Eligible	13	7.7	6	7	24.4	27.8	21.4	
	Not Eligible	133	0.8	67	66	40.3	42.4	38.1	
	Unknown	0	0.0	0	0	0.0	0.0	0.0	
FSM 'Ever 6'	Ever 6	30	3.3	16	14	32.2	33.8	30.4	
	Other	116	0.9	57	59	40.6	43.3	37.9	
	Unknown								
CIC	CIC	0	0.0	0	0	0.0	0.0	0.0	
	Other	146	0.7	73	73	38.9	41.2	36.5	
	Unknown								
Disadvantaged	Disadvantaged	30	3.3	16	14	32.2	33.8	30.4	
	Other	116	0.9	57	59	40.6	43.3	37.9	
	Unknown								
Pupil Premium	Eligible	34	2.9	20	14	32.6	34.2	30.4	
	Not Eligible	112	0.9	53	59	40.7	43.9	37.9	
	Unknown								
Pupil Premium with SEN (K,E,S)	Yes	1	100.0	0	1	10.0	0.0	10.0	
	No	145	3.0	73	72	39.1	41.2	36.9	
	Unknown								
SEN	No Special Needs	139	0.7	72	67	40.0	41.7	38.1	
	SEN support	0	0.0	0	0	0.0	0.0	0.0	
	Statement or EHC plan	7	14.3	1	6	16.8	8.0	18.3	
	Unknown	0	0.0	0	0	0.0	0.0	0.0	
Ethnicity	Asian	Asian Bangladeshi	0	0.0	0	0	0.0	0.0	0.0
		Asian Indian	1	100.0	1	0	32.0	32.0	0.0
		Asian Pakistani	1	100.0	0	1	31.3	0.0	31.3
		Any Other Asian Background	0	0.0	0	0	0.0	0.0	0.0
	Black	Black Caribbean	3	33.3	2	1	20.6	16.4	29.0
		Black African	1	100.0	0	1	42.0	0.0	42.0
		Any Other Black Background	0	0.0	0	0	0.0	0.0	0.0
	Mixed	White/Asian	2	50.0	1	1	41.3	31.0	51.5
		White/Black African	1	100.0	0	1	19.0	0.0	19.0
		White/Black Caribbean	2	50.0	2	0	53.0	53.0	0.0
		Any Other Mixed Background	3	33.3	1	2	32.2	45.5	25.5
	White	White British	126	0.8	64	62	39.6	42.0	37.3
		White Irish	0	0.0	0	0	0.0	0.0	0.0
		Traveller of Irish Heritage	0	0.0	0	0	0.0	0.0	0.0
		Gypsy / Roma or Traveller	0	0.0	0	0	0.0	0.0	0.0
		Any Other White Background	5	20.0	2	3	37.1	37.5	36.8
	Chinese	0	0.0	0	0	0.0	0.0	0.0	
Any Other Ethnic Group	1	100.0	0	1	20.8	0.0	20.8		
Refused/Unknown	0	0.0	0	0	0.0	0.0	0.0		
First Language	Not English	6	16.7	3	3	30.1	35.7	24.5	
	English	140	0.7	70	70	39.2	41.4	37.0	
	Unknown	0	0.0	0	0	0.0	0.0	0.0	
Term of Birth	Autumn (Sept - Dec)	39	2.6	21	18	39.9	42.7	36.6	
	Spring (Jan - Apr)	49	2.0	21	28	37.8	42.2	34.5	
	Summer (May - Aug)	58	1.7	31	27	39.1	39.5	38.6	
IMD*: Deprivation Index	IMD 20% most deprived nationally	7	14.3	3	4	38.0	46.7	31.5	
	Not in IMD 20% most deprived	139	0.7	70	69	38.9	41.0	36.8	
	Unknown	0	0.0	0	0	0.0	0.0	0.0	

7. School Level Pupil Characteristics by Gender

Key Stage 4 2017/18

% achieving English and mathematics

		% English and mathematics										
						Strong Pass			Standard Pass			
		Number of Pupils	Each pupil as %	Girls	Boys	All	Girls	Boys	All	Girls	Boys	
All Pupils		146	0.7	73	73	12.3	17.8	6.8	32.2	37.0	27.4	
FSM Eligible	Eligible	13	7.7	6	7	7.7	16.7	0.0	7.7	16.7	0.0	
	Not Eligible	133	0.8	67	66	12.8	17.9	7.6	34.6	38.8	30.3	
	Unknown	0	0.0	0	0	0.0	0.0	0.0	0.0	0.0	0.0	
FSM 'Ever 6'	Ever 6	30	3.3	16	14	3.3	6.3	0.0	10.0	12.5	7.1	
	Other	116	0.9	57	59	14.7	21.1	8.5	37.9	43.9	32.2	
	Unknown											
CIC	CIC	0	0.0	0	0	0.0	0.0	0.0	0.0	0.0	0.0	
	Other	146	0.7	73	73	12.3	17.8	6.8	32.2	37.0	27.4	
	Unknown											
Disadvantaged	Disadvantaged	30	3.3	16	14	3.3	6.3	0.0	10.0	12.5	7.1	
	Other	116	0.9	57	59	14.7	21.1	8.5	37.9	43.9	32.2	
	Unknown											
Pupil Premium	Eligible	34	2.9	20	14	2.9	5.0	0.0	8.8	10.0	7.1	
	Not Eligible	112	0.9	53	59	15.2	22.6	8.5	39.3	47.2	32.2	
	Unknown											
Pupil Premium with SEN (K,E,S)	Yes	1	100.0	0	1	0.0	0.0	0.0	0.0	0.0	0.0	
	No	145	3.0	73	72	12.4	17.8	6.9	32.4	37.0	27.8	
	Unknown											
SEN	No Special Needs	139	0.7	72	67	12.9	18.1	7.5	33.8	37.5	29.9	
	SEN support	0	0.0	0	0	0.0	0.0	0.0	0.0	0.0	0.0	
	Statement or EHC plan	7	14.3	1	6	0.0	0.0	0.0	0.0	0.0	0.0	
	Unknown	0	0.0	0	0	0.0	0.0	0.0	0.0	0.0	0.0	
Ethnicity	Asian	Asian Bangladeshi	0	0.0	0	0	0.0	0.0	0.0	0.0	0.0	
		Asian Indian	1	100.0	1	0	0.0	0.0	0.0	0.0	0.0	
		Asian Pakistani	1	100.0	0	1	0.0	0.0	0.0	0.0	0.0	
		Any Other Asian Background	0	0.0	0	0	0.0	0.0	0.0	0.0	0.0	
	Black	Black Caribbean	3	33.3	2	1	0.0	0.0	0.0	0.0	0.0	
		Black African	1	100.0	0	1	0.0	0.0	0.0	0.0	0.0	
		Any Other Black Background	0	0.0	0	0	0.0	0.0	0.0	0.0	0.0	
	Mixed	White/Asian	2	50.0	1	1	0.0	0.0	0.0	50.0	0.0	
		White/Black African	1	100.0	0	1	0.0	0.0	0.0	0.0	0.0	
		White/Black Caribbean	2	50.0	2	0	0.0	0.0	0.0	50.0	50.0	
		Any Other Mixed Background	3	33.3	1	2	0.0	0.0	0.0	0.0	0.0	
	White	White British	126	0.8	64	62	13.5	20.3	6.5	34.9	40.6	29.0
		White Irish	0	0.0	0	0	0.0	0.0	0.0	0.0	0.0	
		Traveller of Irish Heritage	0	0.0	0	0	0.0	0.0	0.0	0.0	0.0	
		Gypsy / Roma or Traveller	0	0.0	0	0	0.0	0.0	0.0	0.0	0.0	
Any Other White Background		5	20.0	2	3	20.0	0.0	33.3	20.0	0.0		
Chinese	0	0.0	0	0	0.0	0.0	0.0	0.0	0.0	0.0		
Any Other Ethnic Group	1	100.0	0	1	0.0	0.0	0.0	0.0	0.0	0.0		
Refused/Unknown	0	0.0	0	0	0.0	0.0	0.0	0.0	0.0	0.0		
First Language	Not English	6	16.7	3	3	0.0	0.0	0.0	0.0	0.0	0.0	
	English	140	0.7	70	70	12.9	18.6	7.1	33.6	38.6	28.6	
	Unknown	0	0.0	0	0	0.0	0.0	0.0	0.0	0.0	0.0	
Term of Birth	Autumn (Sept - Dec)	39	2.6	21	18	12.8	14.3	11.1	30.8	38.1	22.2	
	Spring (Jan - Apr)	49	2.0	21	28	12.2	28.6	0.0	34.7	38.1	32.1	
	Summer (May - Aug)	58	1.7	31	27	12.1	12.9	11.1	31.0	35.5	25.9	
IMD*: Deprivation Index	IMD 20% most deprived nationally	7	14.3	3	4	0.0	0.0	0.0	14.3	33.3	0.0	
	Not in IMD 20% most deprived	139	0.7	70	69	12.9	18.6	7.2	33.1	37.1	29.0	
	Unknown	0	0.0	0	0	0.0	0.0	0.0	0.0	0.0	0.0	

7. School Level Pupil Characteristics by Gender

Key Stage 4 2017/18

% achieving English Baccalaureate		% English Baccalaureate										
							Grade 5 or above			Grade 4 or above		
		Number of Pupils	Each pupil as %	Girls	Boys	All	Girls	Boys	All	Girls	Boys	
All Pupils		146	0.7	73	73	3.2	2.7	0.0	6.2	11.0	1.4	
FSM Eligible	Eligible	13	7.7	6	7	0.0	0.0	0.0	0.0	0.0	0.0	
	Not Eligible	133	0.8	67	66	1.5	3.0	0.0	6.8	11.9	1.5	
	Unknown	0	0.0	0	0	0.0	0.0	0.0	0.0	0.0	0.0	
FSM 'Ever 6'	Ever 6	30	3.3	16	14	0.0	0.0	0.0	0.0	0.0	0.0	
	Other	116	0.9	57	59	1.7	3.5	0.0	7.8	14.0	1.7	
	Unknown											
CIC	CIC	0	0.0	0	0	0.0	0.0	0.0	0.0	0.0	0.0	
	Other	146	0.7	73	73	1.4	2.7	0.0	6.2	11.0	1.4	
	Unknown											
Disadvantaged	Disadvantaged	30	3.3	16	14	0.0	0.0	0.0	0.0	0.0	0.0	
	Other	116	0.9	57	59	1.7	3.5	0.0	7.8	14.0	1.7	
	Unknown											
Pupil Premium	Eligible	34	2.9	20	14	0.0	0.0	0.0	0.0	0.0	0.0	
	Not Eligible	112	0.9	53	59	1.8	3.8	0.0	8.0	15.1	1.7	
	Unknown											
Pupil Premium with SEN (K,E,S)	Yes	1	100.0	0	1	0.0	0.0	0.0	0.0	0.0	0.0	
	No	145	3.0	73	72	1.4	2.7	0.0	6.2	11.0	1.4	
	Unknown											
SEN	No Special Needs	139	0.7	72	67	1.4	2.8	0.0	6.5	11.1	1.5	
	SEN support	0	0.0	0	0	0.0	0.0	0.0	0.0	0.0	0.0	
	Statement or EHC plan	7	14.3	1	6	0.0	0.0	0.0	0.0	0.0	0.0	
	Unknown	0	0.0	0	0	0.0	0.0	0.0	0.0	0.0	0.0	
Ethnicity	Asian	Asian Bangladeshi	0	0.0	0	0	0.0	0.0	0.0	0.0	0.0	0.0
		Asian Indian	1	100.0	1	0	0.0	0.0	0.0	0.0	0.0	0.0
		Asian Pakistani	1	100.0	0	1	0.0	0.0	0.0	0.0	0.0	0.0
		Any Other Asian Background	0	0.0	0	0	0.0	0.0	0.0	0.0	0.0	0.0
	Black	Black Caribbean	3	33.3	2	1	0.0	0.0	0.0	0.0	0.0	0.0
		Black African	1	100.0	0	1	0.0	0.0	0.0	0.0	0.0	0.0
		Any Other Black Background	0	0.0	0	0	0.0	0.0	0.0	0.0	0.0	0.0
	Mixed	White/Asian	2	50.0	1	1	0.0	0.0	0.0	0.0	0.0	0.0
		White/Black African	1	100.0	0	1	0.0	0.0	0.0	0.0	0.0	0.0
		White/Black Caribbean	2	50.0	2	0	0.0	0.0	0.0	0.0	0.0	0.0
		Any Other Mixed Background	3	33.3	1	2	0.0	0.0	0.0	0.0	0.0	0.0
	White	White British	126	0.8	64	62	1.6	3.1	0.0	7.1	12.5	1.6
		White Irish	0	0.0	0	0	0.0	0.0	0.0	0.0	0.0	0.0
		Traveller of Irish Heritage	0	0.0	0	0	0.0	0.0	0.0	0.0	0.0	0.0
		Gypsy / Roma or Traveller	0	0.0	0	0	0.0	0.0	0.0	0.0	0.0	0.0
		Any Other White Background	5	20.0	2	3	0.0	0.0	0.0	0.0	0.0	0.0
Chinese	0	0.0	0	0	0.0	0.0	0.0	0.0	0.0	0.0		
Any Other Ethnic Group	1	100.0	0	1	0.0	0.0	0.0	0.0	0.0	0.0		
Refused/Unknown	0	0.0	0	0	0.0	0.0	0.0	0.0	0.0	0.0		
First Language	Not English	6	16.7	3	3	0.0	0.0	0.0	0.0	0.0	0.0	
	English	140	0.7	70	70	1.4	2.9	0.0	6.4	11.4	1.4	
	Unknown	0	0.0	0	0	0.0	0.0	0.0	0.0	0.0	0.0	
Term of Birth	Autumn (Sept - Dec)	39	2.6	21	18	2.6	4.8	0.0	5.1	9.5	0.0	
	Spring (Jan - Apr)	49	2.0	21	28	2.0	4.8	0.0	10.2	19.0	3.6	
	Summer (May- Aug)	58	1.7	31	27	0.0	0.0	0.0	3.4	6.5	0.0	
IMD*: Deprivation Index	IMD 20% most deprived nationally	7	14.3	3	4	0.0	0.0	0.0	0.0	0.0	0.0	
	Not in IMD 20% most deprived	139	0.7	70	69	1.4	2.9	0.0	6.5	11.4	1.4	
	Unknown	0	0.0	0	0	0.0	0.0	0.0	0.0	0.0	0.0	

7. School Level Pupil Characteristics by Gender

Key Stage 4 2017/18

English Baccalaureate Score

						English Baccalaureate Score			
		Number of Pupils	Each pupil as %	Girls	Boys	All	Girls	Boys	
All Pupils		146	0.7	73	73	6.29	3.40	3.00	
FSM Eligible	Eligible	13	7.7	6	7	1.95	2.20	1.74	
	Not Eligible	133	0.8	67	66	3.33	3.51	3.14	
	Unknown	0	0.0	0	0	0.00	0.00	0.00	
FSM 'Ever 6'	Ever 6	30	3.3	16	14	2.58	2.75	2.39	
	Other	116	0.9	57	59	3.36	3.59	3.15	
	Unknown								
CIC	CIC	0	0.0	0	0	0.00	0.00	0.00	
	Other	146	0.7	73	73	3.20	3.40	3.00	
	Unknown								
Disadvantaged	Disadvantaged	30	3.3	16	14	2.58	2.75	2.39	
	Other	116	0.9	57	59	3.36	3.59	3.15	
	Unknown								
Pupil Premium	Eligible	34	2.9	20	14	2.57	2.70	2.39	
	Not Eligible	112	0.9	53	59	3.40	3.67	3.15	
	Unknown								
Pupil Premium with SEN (K,E,S)	Yes	1	100.0	0	1	1.00	0.00	1.00	
	No	145	3.0	73	72	3.22	3.40	3.03	
	Unknown								
SEN	No Special Needs	139	0.7	72	67	3.30	3.44	3.14	
	SEN support	0	0.0	0	0	0.00	0.00	0.00	
	Statement or EHC plan	7	14.3	1	6	1.36	0.50	1.50	
	Unknown	0	0.0	0	0	0.00	0.00	0.00	
Ethnicity	Asian	Asian Bangladeshi	0	0.0	0	0	0.00	0.00	0.00
		Asian Indian	1	100.0	1	0	2.50	2.50	0.00
		Asian Pakistani	1	100.0	0	1	2.33	0.00	2.33
		Any Other Asian Background	0	0.0	0	0	0.00	0.00	0.00
	Black	Black Caribbean	3	33.3	2	1	1.67	1.42	2.17
		Black African	1	100.0	0	1	3.67	0.00	3.67
		Any Other Black Background	0	0.0	0	0	0.00	0.00	0.00
	Mixed	White/Asian	2	50.0	1	1	3.33	2.83	3.83
		White/Black African	1	100.0	0	1	1.67	0.00	1.67
		White/Black Caribbean	2	50.0	2	0	4.67	4.67	0.00
		Any Other Mixed Background	3	33.3	1	2	2.89	4.17	2.25
	White	White British	126	0.8	64	62	3.25	3.44	3.05
		White Irish	0	0.0	0	0	0.00	0.00	0.00
		Traveller of Irish Heritage	0	0.0	0	0	0.00	0.00	0.00
		Gypsy / Roma or Traveller	0	0.0	0	0	0.00	0.00	0.00
		Any Other White Background	5	20.0	2	3	3.33	3.42	3.28
Chinese	0	0.0	0	0	0.00	0.00	0.00		
Any Other Ethnic Group	1	100.0	0	1	2.17	0.00	2.17		
Refused/Unknown	0	0.0	0	0	0.00	0.00	0.00		
First Language	Not English	6	16.7	3	3	2.72	3.11	2.33	
	English	140	0.7	70	70	3.22	3.42	3.03	
	Unknown	0	0.0	0	0	0.00	0.00	0.00	
Term of Birth	Autumn (Sept - Dec)	39	2.6	21	18	3.33	3.56	3.06	
	Spring (Jan - Apr)	49	2.0	21	28	3.12	3.50	2.83	
	Summer (May - Aug)	58	1.7	31	27	3.20	3.23	3.16	
IMD*: Deprivation Index	IMD 20% most deprived nationally	7	14.3	3	4	3.29	3.95	2.79	
	Not in IMD 20% most deprived	139	0.7	70	69	3.20	3.38	3.02	
	Unknown	0	0.0	0	0	0.00	0.00	0.00	

8. LA Level Pupil Characteristics by Gender

Key Stage 4 2017/18

LA

Attainment 8 Score

Attainment 8 Score

		Number of Pupils	Each pupil as %	Girls	Boys	All	Girls	Boys	
All Pupils		15,578	0.0	7,578	7,940	46.8	47.5	42.7	
FSM Eligible	Eligible	1,439	0.1	704	735	29.9	33.1	26.9	
	Not Eligible	14,050	0.0	6,862	7,188	48.7	51.8	45.8	
	Unknown	29	3.4	12	17	12.2	14.4	10.7	
FSM 'Ever 6'	Ever 6	3,239	0.0	1,610	1,629	33.0	35.7	30.3	
	Other	12,279	0.0	5,968	6,311	50.5	53.8	47.5	
	Unknown								
CIC	CIC	179	0.6	86	93	25.0	27.6	22.6	
	Other	15,339	0.0	7,492	7,847	47.1	50.2	44.2	
	Unknown								
Disadvantaged	Disadvantaged	3,371	0.0	1,665	1,706	32.8	35.7	30.1	
	Other	12,147	0.0	5,913	6,234	50.8	54.0	47.7	
	Unknown								
Pupil Premium	Eligible	3,533	0.0	1,752	1,781	33.7	36.6	30.9	
	Not Eligible	11,985	0.0	5,826	6,159	50.8	54.0	47.7	
	Unknown								
Pupil Premium with SEN (K,E,S)	Yes	750	0.1	250	500	16.8	18.5	16.0	
	No	14,767	0.0	7,327	7,440	48.4	51.0	45.8	
	Unknown								
SEN	No Special Needs	13,551	0.0	6,880	6,671	49.8	51.8	47.7	
	SEN support	1,345	0.1	545	800	33.2	37.3	30.4	
	Statement or EHC plan	592	0.2	140	452	12.6	9.5	13.5	
	Unknown	29	3.4	12	17	12.2	14.4	10.7	
Ethnicity	Asian	Asian Bangladeshi	71	1.4	33	38	53.3	61.8	46.0
		Asian Indian	244	0.4	120	124	59.9	63.3	56.6
		Asian Pakistani	39	2.6	19	20	55.9	51.7	59.9
		Any Other Asian Background	227	0.4	99	128	57.7	60.9	55.3
	Black	Black Caribbean	29	3.4	15	14	42.0	43.7	40.2
		Black African	326	0.3	151	175	58.0	62.2	54.3
		Any Other Black Background	38	2.6	14	24	44.5	47.4	42.8
	Mixed	White/Asian	185	0.5	88	97	59.8	63.7	56.3
		White/Black African	83	1.2	44	39	46.6	50.2	42.5
		White/Black Caribbean	124	0.8	72	52	43.8	47.6	38.5
		Any Other Mixed Background	323	0.3	158	165	53.0	57.7	48.5
	White	White British	12,688	0.0	6,186	6,502	45.8	48.8	43.0
		White Irish	39	2.6	21	18	56.3	57.2	55.2
		Traveller of Irish Heritage	5	20.0	3	2	25.8	37.7	7.9
		Gypsy / Roma or Traveller	87	1.1	52	35	22.6	27.4	15.3
		Any Other White Background	659	0.2	330	329	48.4	51.5	45.3
	Chinese	57	1.8	30	27	63.2	64.7	61.5	
Any Other Ethnic Group	123	0.8	61	62	44.4	50.6	38.3		
Refused/Unknown	170	0.6	81	89	45.1	48.6	41.8		
First Language	Not English	1,252	0.1	590	662	50.7	54.2	47.5	
	English	14,233	0.0	6,973	7,260	46.6	49.7	43.7	
	Unknown	30	3.3	12	18	11.8	14.4	10.1	
Term of Birth	Autumn (Sept - Dec)	5,149	0.0	2,465	2,684	48.0	51.7	44.6	
	Spring (Jan - Apr)	5,046	0.0	2,503	2,543	47.1	49.7	44.5	
	Summer (May - Aug)	5,323	0.0	2,610	2,713	45.6	48.6	42.8	
IMD*: Deprivation Index	IMD 20% most deprived nationally	2,210	0.0	1,099	1,111	36.4	39.3	33.5	
	Not in IMD 20% most deprived	13,256	0.0	6,451	6,805	48.7	51.9	45.7	
	Unknown	52	1.9	28	24	20.3	19.4	21.4	

8. LA Level Pupil Characteristics by Gender

Key Stage 4 2017/18

LA

% achieving English and mathematics

				% English and mathematics								
				Strong Pass			Standard Pass					
		Number of Pupils	Each pupil as %	Girls	Boys	All	Girls	Boys	All	Girls	Boys	
All Pupils		15,578	0.0	7,578	7,940	43.8	48.4	39.8	63.3	67.8	59.4	
FSM Eligible	Eligible	1,439	0.1	704	735	16.1	19.9	12.5	31.2	36.6	26.0	
	Not Eligible	14,050	0.0	6,862	7,188	46.9	51.4	42.6	66.9	71.1	63.0	
	Unknown	29	3.4	12	17	10.3	16.7	5.9	17.2	16.7	17.6	
FSM 'Ever 6'	Ever 6	3,239	0.0	1,610	1,629	19.0	21.9	16.2	36.4	40.7	32.2	
	Other	12,279	0.0	5,968	6,311	50.6	55.5	45.9	70.7	75.2	66.5	
	Unknown											
CIC	CIC	179	0.6	86	93	13.4	19.8	7.5	25.1	34.9	16.1	
	Other	15,339	0.0	7,492	7,847	44.3	48.7	40.2	64.0	68.2	60.0	
	Unknown											
Disadvantaged	Disadvantaged	3,371	0.0	1,665	1,706	19.0	22.1	15.9	36.3	40.9	31.8	
	Other	12,147	0.0	5,913	6,234	50.9	55.8	46.3	71.1	75.4	67.0	
	Unknown											
Pupil Premium	Eligible	3,533	0.0	1,752	1,781	20.5	23.9	17.2	37.7	42.4	33.1	
	Not Eligible	11,985	0.0	5,826	6,159	50.9	55.8	46.3	71.1	75.5	67.1	
	Unknown											
Pupil Premium with SEN (K,E,S)	Yes	750	0.1	250	500	4.7	7.2	3.4	10.5	13.6	9.0	
	No	14,767	0.0	7,327	7,440	46.0	49.8	42.2	66.2	69.7	62.8	
	Unknown											
SEN	No Special Needs	13,551	0.0	6,880	6,671	47.9	50.8	44.9	68.7	71.1	66.3	
	SEN support	1,345	0.1	545	800	23.2	30.8	18.0	36.1	43.5	31.0	
	Statement or EHC plan	592	0.2	140	452	4.1	2.9	4.4	9.1	4.3	10.6	
	Unknown	29	3.4	12	17	10.3	16.7	5.9	17.2	16.7	17.6	
Ethnicity	Asian	Asian Bangladeshi	71	1.4	33	38	57.7	69.7	47.4	76.1	90.9	63.2
		Asian Indian	244	0.4	120	124	72.1	74.2	70.2	86.1	85.8	86.3
		Asian Pakistani	39	2.6	19	20	61.5	57.9	65.0	79.5	78.9	80.0
		Any Other Asian Background	227	0.4	99	128	72.2	79.8	66.4	83.7	87.9	80.5
	Black	Black Caribbean	29	3.4	15	14	34.5	40.0	28.6	51.7	60.0	42.9
		Black African	326	0.3	151	175	66.6	74.2	60.0	82.5	90.1	76.0
		Any Other Black Background	38	2.6	14	24	34.2	28.6	37.5	65.8	78.6	58.3
	Mixed	White/Asian	185	0.5	88	97	68.6	78.4	59.8	87.6	94.3	81.4
		White/Black African	83	1.2	44	39	36.1	43.2	28.2	63.9	72.7	53.8
		White/Black Caribbean	124	0.8	72	52	34.7	37.5	30.8	54.8	65.3	40.4
		Any Other Mixed Background	323	0.3	158	165	55.1	64.6	46.1	72.1	76.6	67.9
	White	White British	12,688	0.0	6,186	6,502	41.7	46.0	37.7	61.9	66.1	57.9
		White Irish	39	2.6	21	18	61.5	66.7	55.6	79.5	76.2	83.3
		Traveller of Irish Heritage	5	20.0	3	2	20.0	33.3	0.0	20.0	33.3	0.0
		Gypsy / Roma or Traveller	87	1.1	52	35	9.2	13.5	2.9	17.2	21.2	11.4
		Any Other White Background	659	0.2	330	329	46.4	50.6	42.2	64.6	69.7	59.6
Chinese	57	1.8	30	27	77.2	86.7	66.7	93.0	93.3	92.6		
Any Other Ethnic Group	123	0.8	61	62	39.0	44.3	33.9	53.7	59.0	48.4		
Refused/Unknown	170	0.6	81	89	44.7	50.6	39.3	58.8	65.4	52.8		
First Language	Not English	1,252	0.1	590	662	52.4	57.5	47.9	68.8	73.6	64.5	
	English	14,233	0.0	6,973	7,260	43.3	47.7	39.1	63.2	67.4	59.1	
	Unknown	30	3.3	12	18	10.0	16.7	5.6	16.7	16.7	16.7	
Term of Birth	Autumn (Sept - Dec)	5,149	0.0	2,465	2,684	45.8	51.3	40.8	65.3	70.7	60.4	
	Spring (Jan - Apr)	5,046	0.0	2,503	2,543	45.1	48.7	41.5	64.3	68.0	60.6	
	Summer (May - Aug)	5,323	0.0	2,610	2,713	41.1	45.3	37.1	61.1	65.0	57.4	
IMD*: Deprivation Index	IMD 20% most deprived nationally	2,210	0.0	1,099	1,111	25.1	28.2	22.1	43.8	47.5	40.1	
	Not in IMD 20% most deprived	13,256	0.0	6,451	6,805	47.3	52.0	42.8	67.0	71.5	62.7	
	Unknown	52	1.9	28	24	7.7	3.6	12.5	21.2	10.7	33.3	

8. LA Level Pupil Characteristics by Gender

Key Stage 4 2017/18

LA

% achieving English Baccalaureate

		% English Baccalaureate										
		Grade 5 or above			Grade 4 or above							
		Number of Pupils	Each pupil as %	Girls	Boys	All	Girls	Boys	All	Girls	Boys	
All Pupils		15,578	0.0	7,578	7,940	4.1	26.6	15.1	27.7	34.6	21.4	
FSM Eligible	Eligible	1,439	0.1	704	735	4.3	5.8	2.9	6.5	8.7	4.4	
	Not Eligible	14,050	0.0	6,862	7,188	22.4	28.8	16.3	30.1	37.3	23.2	
	Unknown	29	3.4	12	17	0.0	0.0	0.0	3.4	8.3	0.0	
FSM 'Ever 6'	Ever 6	3,239	0.0	1,610	1,629	5.4	7.3	3.6	8.3	10.9	5.8	
	Other	12,279	0.0	5,968	6,311	24.7	31.8	18.0	33.0	41.0	25.4	
	Unknown											
CIC	CIC	179	0.6	86	93	3.4	4.7	2.2	5.6	5.8	5.4	
	Other	15,339	0.0	7,492	7,847	20.9	26.9	15.2	28.1	34.9	21.6	
	Unknown											
Disadvantaged	Disadvantaged	3,371	0.0	1,665	1,706	5.4	7.4	3.5	8.4	10.9	6.0	
	Other	12,147	0.0	5,913	6,234	24.9	32.0	18.2	33.2	41.2	25.6	
	Unknown											
Pupil Premium	Eligible	3,533	0.0	1,752	1,781	6.1	8.6	3.7	9.4	12.5	6.3	
	Not Eligible	11,985	0.0	5,826	6,159	25.0	32.0	18.3	33.3	41.2	25.8	
	Unknown											
Pupil Premium with SEN (K,E,S)	Yes	750	0.1	250	500	0.5	1.2	0.2	1.2	2.0	0.8	
	No	14,767	0.0	7,327	7,440	21.7	27.5	16.0	29.2	35.7	22.8	
	Unknown											
SEN	No Special Needs	13,551	0.0	6,880	6,671	22.8	28.2	17.4	30.6	36.5	24.5	
	SEN support	1,345	0.1	545	800	8.3	14.1	4.3	12.0	19.3	7.0	
	Statement or EHC plan	592	0.2	140	452	0.8	1.4	0.7	1.7	1.4	1.8	
	Unknown	29	3.4	12	17	0.0	0.0	0.0	3.4	8.3	0.0	
Ethnicity	Asian	Asian Bangladeshi	71	1.4	33	38	26.8	36.4	18.4	43.7	57.6	31.6
		Asian Indian	244	0.4	120	124	44.7	53.3	36.3	51.6	61.7	41.9
		Asian Pakistani	39	2.6	19	20	43.6	42.1	45.0	48.7	47.4	50.0
		Any Other Asian Background	227	0.4	99	128	36.6	50.5	25.8	44.1	56.6	34.4
	Black	Black Caribbean	29	3.4	15	14	17.2	13.3	21.4	17.2	13.3	21.4
		Black African	326	0.3	151	175	37.4	44.4	31.4	45.4	53.6	38.3
		Any Other Black Background	38	2.6	14	24	13.2	7.1	16.7	15.8	7.1	20.8
	Mixed	White/Asian	185	0.5	88	97	37.8	46.6	29.9	47.6	58.0	38.1
		White/Black African	83	1.2	44	39	19.3	27.3	10.3	26.5	36.4	15.4
		White/Black Caribbean	124	0.8	72	52	20.2	23.6	15.4	22.6	25.0	19.2
		Any Other Mixed Background	323	0.3	158	165	28.8	41.1	17.0	37.2	48.7	26.1
	White	White British	12,688	0.0	6,186	6,502	18.7	24.3	13.4	25.7	32.2	19.6
		White Irish	39	2.6	21	18	43.6	57.1	27.8	48.7	57.1	38.9
		Traveller of Irish Heritage	5	20.0	3	2	0.0	0.0	0.0	0.0	0.0	0.0
		Gypsy / Roma or Traveller	87	1.1	52	35	0.0	0.0	0.0	4.6	7.7	0.0
		Any Other White Background	659	0.2	330	329	24.0	30.0	17.9	32.8	40.6	24.9
	Chinese	57	1.8	30	27	52.6	66.7	37.0	63.2	73.3	51.9	
Any Other Ethnic Group	123	0.8	61	62	22.8	36.1	9.7	28.5	41.0	16.1		
Refused/Unknown	170	0.6	81	89	22.4	24.7	20.2	30.6	35.8	25.8		
First Language	Not English	1,252	0.1	590	662	28.6	36.6	21.5	35.5	44.9	27.2	
	English	14,233	0.0	6,973	7,260	20.0	25.8	14.5	27.2	33.7	20.9	
	Unknown	30	3.3	12	18	0.0	0.0	0.0	3.3	8.3	0.0	
Term of Birth	Autumn (Sept - Dec)	5,149	0.0	2,465	2,684	22.3	29.5	15.6	29.7	38.0	22.1	
	Spring (Jan - Apr)	5,046	0.0	2,503	2,543	21.0	25.7	16.3	28.4	33.8	23.0	
	Summer (May - Aug)	5,323	0.0	2,610	2,713	18.9	24.7	13.3	25.5	32.0	19.3	
IMD*: Deprivation Index	IMD 20% most deprived nationally	2,210	0.0	1,099	1,111	8.5	10.3	6.7	11.7	13.9	9.5	
	Not in IMD 20% most deprived	13,256	0.0	6,451	6,805	22.8	29.5	16.5	30.6	38.2	23.4	
	Unknown	52	1.9	28	24	0.0	0.0	0.0	1.9	0.0	4.2	

8. LA Level Pupil Characteristics by Gender

Key Stage 4 2017/18

LA

English Baccalaureate Score

				English Baccalaureate Score					
		Number of Pupils	Each pupil as %	Girls	Boys	All	Girls	Boys	
All Pupils		15,578	0.0	7,578	7,940	4.09	3.81	4.40	
FSM Eligible	Eligible	1,439	0.1	704	735	2.41	4.40	3.81	
	Not Eligible	14,050	0.0	6,862	7,188	4.28	4.58	3.98	
	Unknown	29	3.4	12	17	1.02	1.18	0.91	
FSM 'Ever 6'	Ever 6	3,239	0.0	1,610	1,629	2.68	2.91	2.46	
	Other	12,279	0.0	5,968	6,311	4.47	4.80	4.15	
	Unknown								
CIC	CIC	179	0.6	86	93	2.01	2.20	1.83	
	Other	15,339	0.0	7,492	7,847	4.12	4.43	3.83	
	Unknown								
Disadvantaged	Disadvantaged	3,371	0.0	1,665	1,706	2.67	2.91	2.44	
	Other	12,147	0.0	5,913	6,234	4.49	4.82	4.18	
	Unknown								
Pupil Premium	Eligible	3,533	0.0	1,752	1,781	2.76	3.01	2.52	
	Not Eligible	11,985	0.0	5,826	6,159	4.49	4.82	4.18	
	Unknown								
Pupil Premium with SEN (K,E,S)	Yes	750	0.1	250	500	1.28	1.43	1.20	
	No	14,767	0.0	7,327	7,440	3.16	3.27	3.03	
	Unknown								
SEN	No Special Needs	13,551	0.0	6,880	6,671	4.37	4.58	4.16	
	SEN support	1,345	0.1	545	800	2.76	3.16	2.49	
	Statement or EHC plan	592	0.2	140	452	0.95	0.70	1.02	
	Unknown	29	3.4	12	17	1.02	1.18	0.91	
Ethnicity	Asian	Asian Bangladeshi	71	1.4	33	38	4.77	5.60	4.05
		Asian Indian	244	0.4	120	124	5.57	5.96	5.20
		Asian Pakistani	39	2.6	19	20	5.09	4.68	5.48
		Any Other Asian Background	227	0.4	99	128	5.22	5.63	4.91
	Black	Black Caribbean	29	3.4	15	14	3.69	3.89	3.47
		Black African	326	0.3	151	175	5.28	5.72	4.90
		Any Other Black Background	38	2.6	14	24	3.75	3.83	3.70
	Mixed	White/Asian	185	0.5	88	97	5.48	5.94	5.06
		White/Black African	83	1.2	44	39	4.06	4.44	3.64
		White/Black Caribbean	124	0.8	72	52	3.75	4.11	3.24
		Any Other Mixed Background	323	0.3	158	165	4.78	5.27	4.31
	White	White British	12,688	0.0	6,186	6,502	3.97	4.27	3.69
		White Irish	39	2.6	21	18	5.25	5.33	5.15
		Traveller of Irish Heritage	5	20.0	3	2	1.83	2.72	0.50
		Gypsy / Roma or Traveller	87	1.1	52	35	1.74	2.14	1.14
		Any Other White Background	659	0.2	330	329	4.38	4.70	4.06
	Chinese	57	1.8	30	27	6.10	6.31	5.87	
Any Other Ethnic Group	123	0.8	61	62	3.94	4.57	3.32		
Refused/Unknown	170	0.6	81	89	4.00	4.32	3.70		
First Language	Not English	1,252	0.1	590	662	4.60	4.98	4.26	
	English	14,233	0.0	6,973	7,260	4.06	4.36	3.77	
	Unknown	30	3.3	12	18	0.99	1.18	0.86	
Term of Birth	Autumn (Sept - Dec)	5,149	0.0	2,465	2,684	4.21	4.59	3.86	
	Spring (Jan - Apr)	5,046	0.0	2,503	2,543	4.12	4.37	3.86	
	Summer (May - Aug)	5,323	0.0	2,610	2,713	3.97	4.25	3.70	
IMD*: Deprivation Index	IMD 20% most deprived nationally	2,210	0.0	1,099	1,111	3.00	3.23	2.78	
	Not in IMD 20% most deprived	13,256	0.0	6,451	6,805	4.29	4.61	3.98	
	Unknown	52	1.9	28	24	1.72	1.52	1.94	

9. School Performance by Prior Attainment - KS2 Subject to KS4 Subject

Key Stage 4 2017/18

Overall																														
	Overall																													
	Progress 8									Attainment 8																				
	All			Dis			PP			All			Dis			PP														
Cohort	134			25			28			134			25			28														
School Score	-0.28			-0.45			-0.41			39.5			33.2			33.5														
National Score	-0.03									46.4																				
Difference	-0.25									-6.9																				
	Low			Middle			High			Low			Middle			High														
	All		Dis	PP		All		Dis	PP		All		Dis	PP		All		Dis	PP											
Cohort	17		6	6		75		12	15		42		7	7		17		6	6		75		12	15		42		7	7	
School Score	-0.37		-0.24	-0.24		-0.20		-0.20	-0.16		-0.39		-1.07	-1.07		21.2		20.5	20.5		38.1		35.2	35.4		49.5		40.7	40.7	

English																														
	English element																													
	Progress 8									Attainment 8																				
	All			Dis			PP			All			Dis			PP														
Cohort	134			25			28			134			25			28														
School Score	-0.42			-0.39			-0.36			4.2			4.0			4.0														
National Score	-0.03									9.9																				
Difference	-0.39									-5.7																				
	Low			Middle			High			Low			Middle			High														
	All		Dis	PP		All		Dis	PP		All		Dis	PP		All		Dis	PP											
Cohort	20		8	8		59		8	11		55		9	9		20		8	8		59		8	11		55		9	9	
School Score	-0.53		-0.63	-0.63		-0.45		-0.46	-0.36		-0.35		-0.11	-0.11		2.6		4.2	4.2		4.0		4.2	4.2		5.1		4.2	4.2	

Maths																														
	mathematics element																													
	Progress 8									Attainment 8																				
	All			Dis			PP			All			Dis			PP														
Cohort	134			25			28			134			25			28														
School Score	-0.84			-1.20			-1.21			3.2			2.4			2.4														
National Score	-0.02									9.0																				
Difference	-0.82									-5.8																				
	Low			Middle			High			Low			Middle			High														
	All		Dis	PP		All		Dis	PP		All		Dis	PP		All		Dis	PP											
Cohort	23		9	10		78		12	14		33		4	4		23		9	10		78		12	14		33		4	4	
School Score	-0.74		-0.68	-0.59		-0.82		-1.11	-1.26		-0.94		-2.62	-2.62		1.6		1.8	1.9		3.1		2.7	2.5		4.5		3.0	3.0	

10. Transition Matrices

Key Stage 4 2017/18

KS4 % Attained

All pupils		Key Stage 4 English grade											Total	
		No KS4 results	GCSEs in English are graded 1 (low) to 9 (high)											
			U	1	2	3	4	5	6	7	8	9		
Number of pupils														
No KS2 outcome		0	0	0	2	5	3	2	0	0	0	0	12	
KS2 English attainment	W	0	0	0	0	0	0	0	0	0	0	0	0	
	1	0	0	0	0	0	1	0	0	0	0	0	1	
	2	0	0	0	1	0	0	0	0	0	0	0	1	
	3c	0	1	0	0	1	1	0	0	0	0	0	3	
	3b	1	1	2	0	3	1	0	0	0	0	0	8	
	3a	0	1	0	2	3	0	0	0	0	0	0	6	
	4c	0	0	0	4	3	3	3	0	1	0	0	14	
	4b	0	0	2	3	10	5	8	1	1	0	0	30	
	4a	0	0	0	0	3	4	4	3	1	1	0	16	
	5c	0	0	1	0	2	10	11	8	3	0	0	35	
	5b	0	1	0	0	2	3	2	7	2	1	1	19	
	5a	0	0	0	0	0	0	0	1	0	0	0	1	
	6	0	0	0	0	0	0	0	0	0	0	0	0	
	Total	1	4	5	12	32	31	30	20	8	2	1	146	

Disadvantaged pupils		Key Stage 4 English grade											Total
		No KS4 results	GCSEs in English are graded 1 (low) to 9 (high)										
			U	1	2	3	4	5	6	7	8	9	
Number of pupils													
No KS2 outcome		0	0	0	1	3	0	1	0	0	0	0	5
KS2 English attainment	W	0	0	0	0	0	0	0	0	0	0	0	0
	1	0	0	0	0	0	0	0	0	0	0	0	0
	2	0	0	0	1	0	0	0	0	0	0	0	1
	3c	0	0	0	0	0	0	0	0	0	0	0	0
	3b	1	0	1	0	1	1	0	0	0	0	0	4
	3a	0	0	0	1	1	0	0	0	0	0	0	2
	4c	0	0	0	1	0	0	0	0	0	0	0	1
	4b	0	0	0	0	5	0	1	0	0	0	0	6
	4a	0	0	0	0	0	0	0	1	1	0	0	2
	5c	0	0	0	0	0	4	1	2	0	0	0	7
	5b	0	0	0	0	0	0	0	2	0	0	0	2
	5a	0	0	0	0	0	0	0	0	0	0	0	0
	6	0	0	0	0	0	0	0	0	0	0	0	0
	Total	1	0	1	4	10	5	3	5	1	0	0	30

10. Transition Matrices

Key Stage 4 2017/18

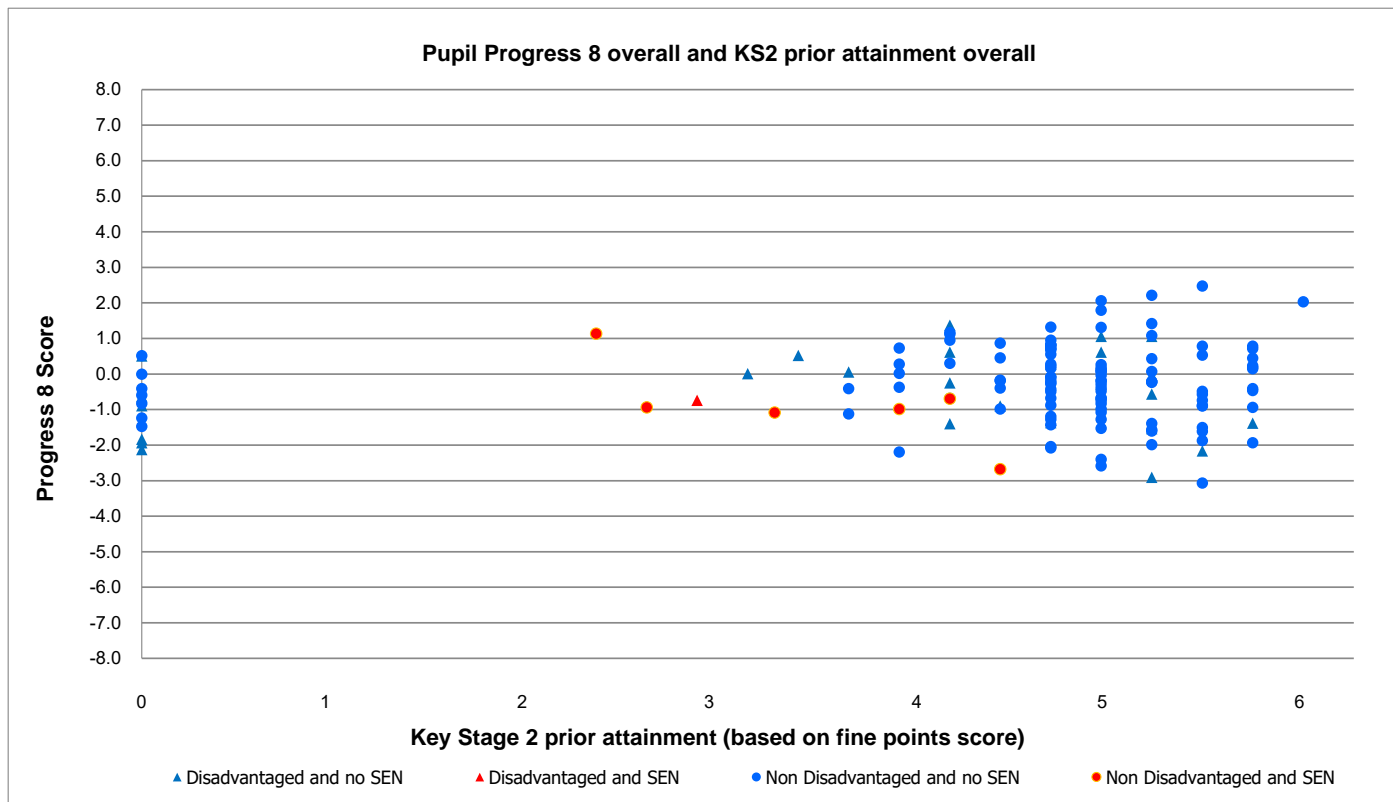
KS4 % Attained

All pupils		Key Stage 4 mathematics grade											Total	
		No KS4 results	GCSEs in mathematics are graded 1 (low) to 9 (high)											
			U	1	2	3	4	5	6	7	8	9		
Number of pupils														
No KS2 outcome		1	0	2	2	5	3	0	0	0	0	0	13	
KS2 mathematics attainment	W	0	0	0	0	0	0	0	0	0	0	0	0	
	1	0	0	0	0	0	0	0	0	0	0	0	0	
	2	0	0	1	0	0	0	0	0	0	0	0	1	
	3c	0	0	2	0	0	0	0	0	0	0	0	2	
	3b	0	3	5	3	0	0	0	0	0	0	0	11	
	3a	0	0	1	2	4	1	0	0	0	0	0	8	
	4c	0	1	3	2	13	8	1	0	0	0	0	28	
	4b	0	2	1	3	16	6	1	0	0	0	0	29	
	4a	0	1	0	1	6	9	3	0	1	0	0	21	
	5c	0	0	0	0	5	6	4	2	0	1	0	18	
	5b	0	0	0	1	0	3	4	0	1	1	0	10	
	5a	0	1	0	0	0	0	4	0	0	0	0	5	
	6	0	0	0	0	0	0	0	0	0	0	0	0	
	Total		1	8	15	14	49	36	17	2	2	2	0	146

Disadvantaged pupils		Key Stage 4 mathematics grade											Total
		No KS4 results	GCSEs in mathematics are graded 1 (low) to 9 (high)										
			U	1	2	3	4	5	6	7	8	9	
Number of pupils													
No KS2 outcome		1	0	2	0	3	0	0	0	0	0	0	6
KS2 mathematics attainment	W	0	0	0	0	0	0	0	0	0	0	0	0
	1	0	0	0	0	0	0	0	0	0	0	0	0
	2	0	0	0	0	0	0	0	0	0	0	0	0
	3c	0	0	1	0	0	0	0	0	0	0	0	1
	3b	0	1	1	2	0	0	0	0	0	0	0	4
	3a	0	0	0	1	2	0	0	0	0	0	0	3
	4c	0	1	0	1	2	2	0	0	0	0	0	6
	4b	0	0	1	0	4	0	0	0	0	0	0	5
	4a	0	0	0	0	1	0	0	0	0	0	0	1
	5c	0	0	0	0	1	1	0	0	0	0	0	2
	5b	0	0	0	0	0	0	0	0	0	0	0	0
	5a	0	1	0	0	0	0	1	0	0	0	0	2
	6	0	0	0	0	0	0	0	0	0	0	0	0
	Total		1	3	5	4	13	3	1	0	0	0	0

11. Progress Scatterplots - Prior Attainment and Progress

Key Stage 4 2017/18

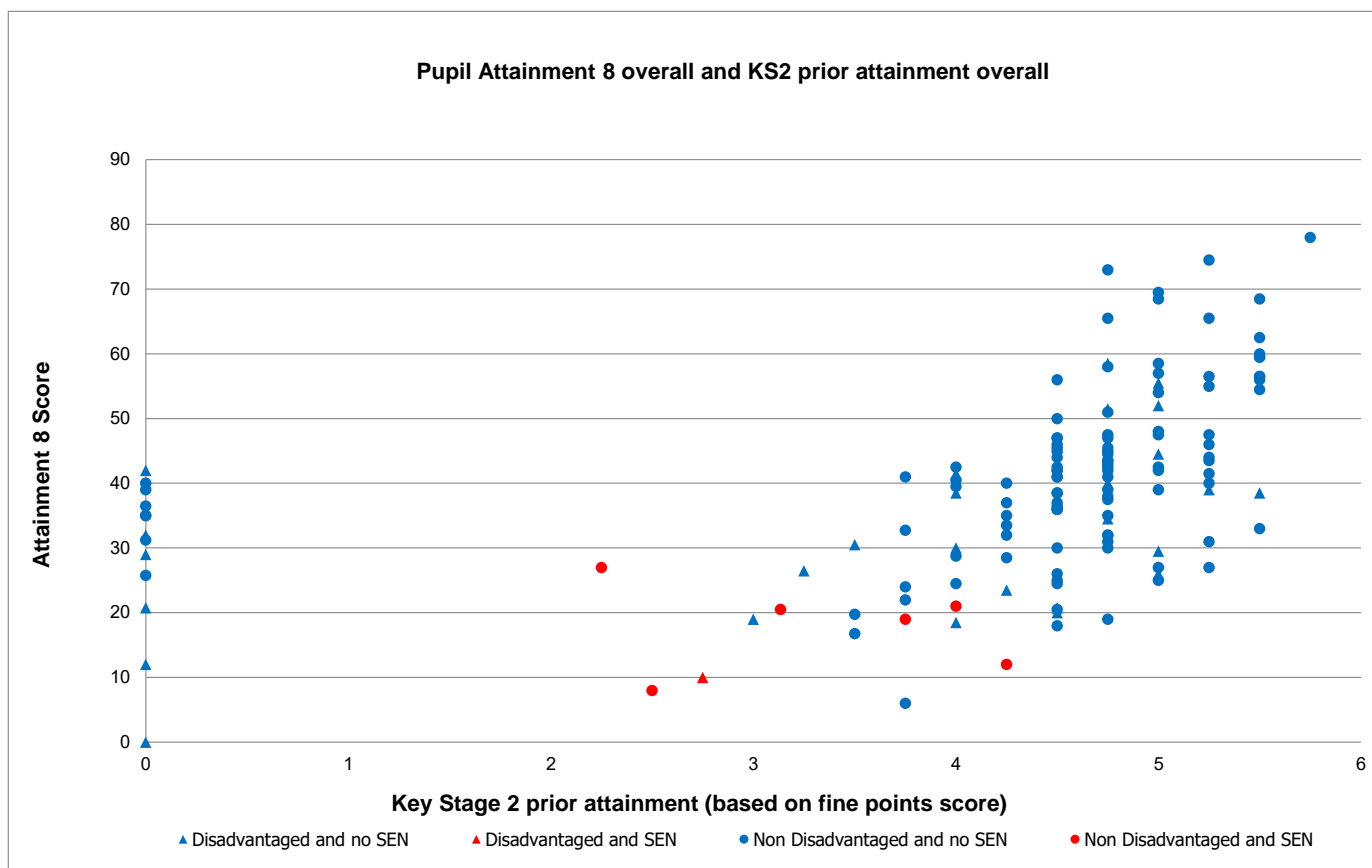


Progress 8 Score by prior attainment group (for Progress 8 overall and prior attainment overall)

KS2 Prior Attainment	2.99 or below	3.0 - 3.99	4.0 - 4.99	5.0 - 5.66	5.67 or above
Cohort	4	13	75	41	1
All Pupils	-0.66	-0.28	-0.20	-0.45	2.04
Disadvantaged pupils	-1.43	0.35	-0.20	-1.07	-
SEN pupils	-0.18	-1.03	-1.68	-	-
Other pupils	0.10	-0.57	-0.20	-0.32	2.04

11. Progress Scatterplots - Prior Attainment and Progress

Key Stage 4 2017/18

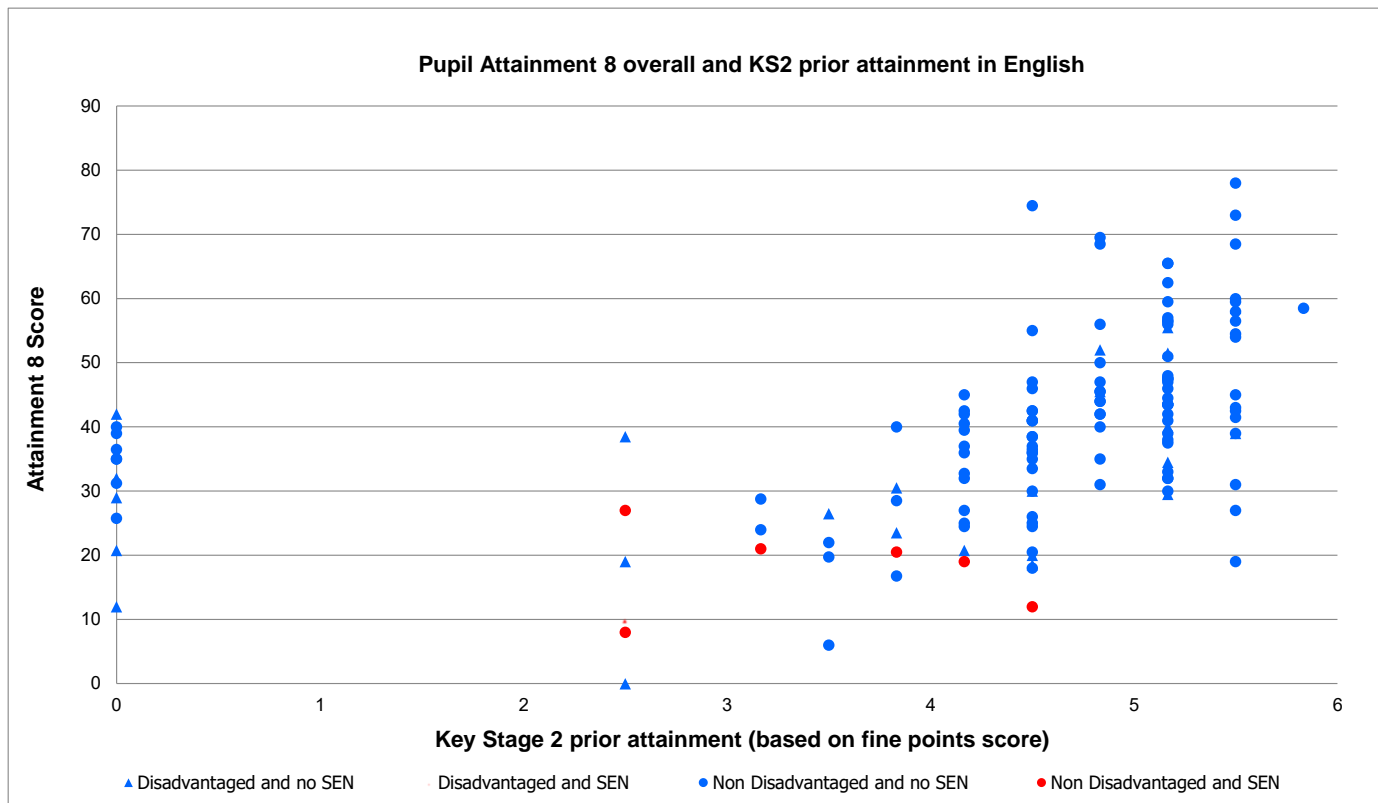


Attainment 8 Score by prior attainment group (for Attainment 8 overall and prior attainment overall)

KS2 Prior Attainment	2.99 or below	3.0 - 3.99	4.0 - 4.99	5.0 - 5.66	5.67 or above
Cohort	4	13	75	41	1
All Pupils	11.3	24.2	38.1	48.8	78.0
Disadvantaged Pupils	5.0	28.3	35.2	40.7	-
SEN pupils	15.0	19.8	16.5	-	-
Other Pupils	17.5	22.4	38.6	50.5	78.0

11. Progress Scatterplots - Prior Attainment and Progress

Key Stage 4 2017/18

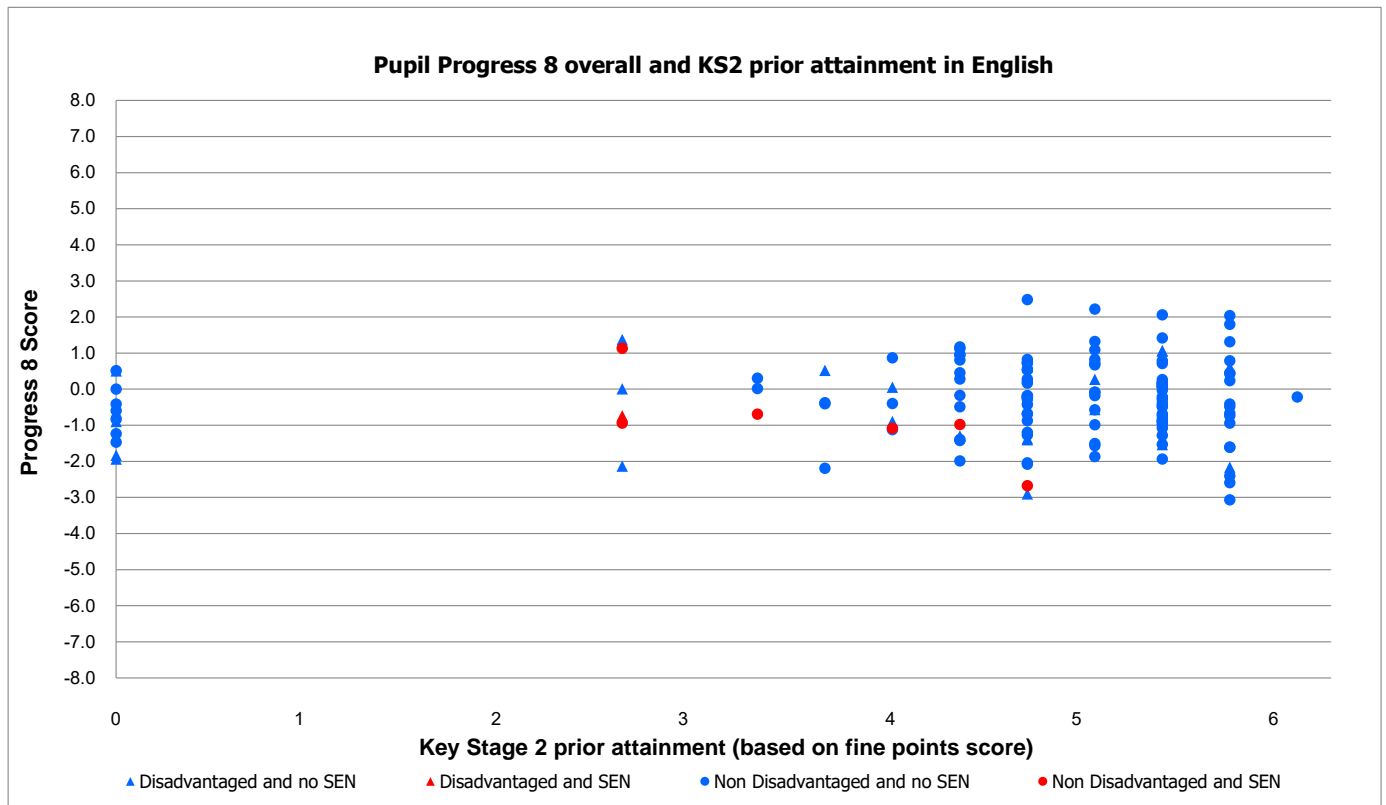


Attainment 8 Score by prior attainment group (for Attainment 8 overall and prior attainment English)

KS2 Prior Attainment	2.99 or below	3.0 - 3.99	4.0 - 4.99	5.0 - 5.66	5.67 or above
Cohort	6	14	59	54	1
All Pupils	17.1	24.6	37.9	47.3	58.5
Disadvantaged Pupils	16.9	29.4	31.8	43.5	-
SEN pupils	15.0	20.8	15.5	-	-
Other Pupils	17.5	22.7	38.8	48.1	58.5

11. Progress Scatterplots - Prior Attainment and Progress

Key Stage 4 2017/18

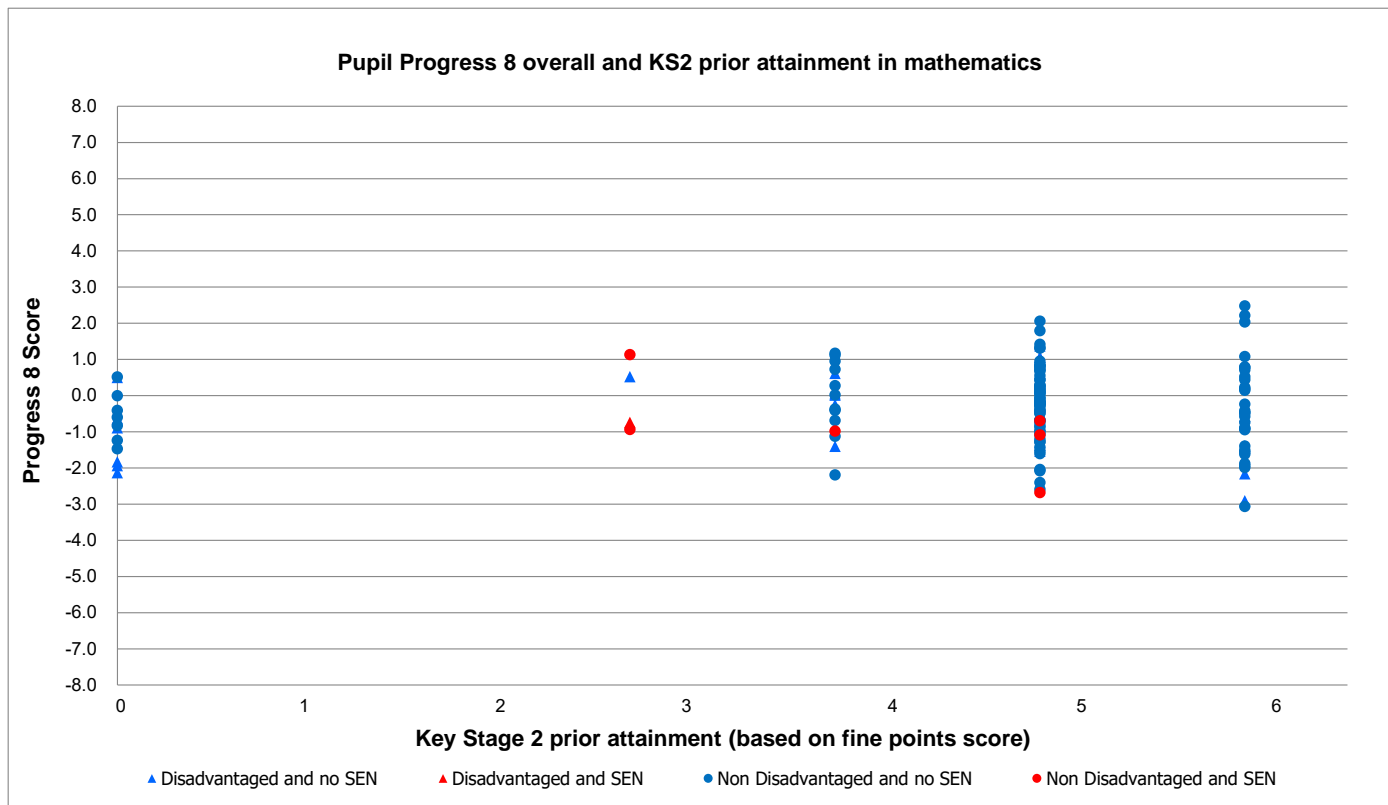


Progress 8 Score by prior attainment group (for Progress 8 overall and prior attainment in English)

KS2 Prior Attainment	2.99 or below	3.0 - 3.99	4.0 - 4.99	5.0 - 5.66	5.67 or above
Cohort	6	14	59	54	1
All Pupils	-0.21	-0.33	-0.24	-0.32	-0.21
Disadvantaged Pupils	-0.37	0.13	-0.86	-0.39	-0.21
SEN pupils	-0.18	-0.89	-1.83	-	-
Other Pupils	0.10	-0.51	-0.14	-0.31	-0.21

11. Progress Scatterplots - Prior Attainment and Progress

Key Stage 4 2017/18

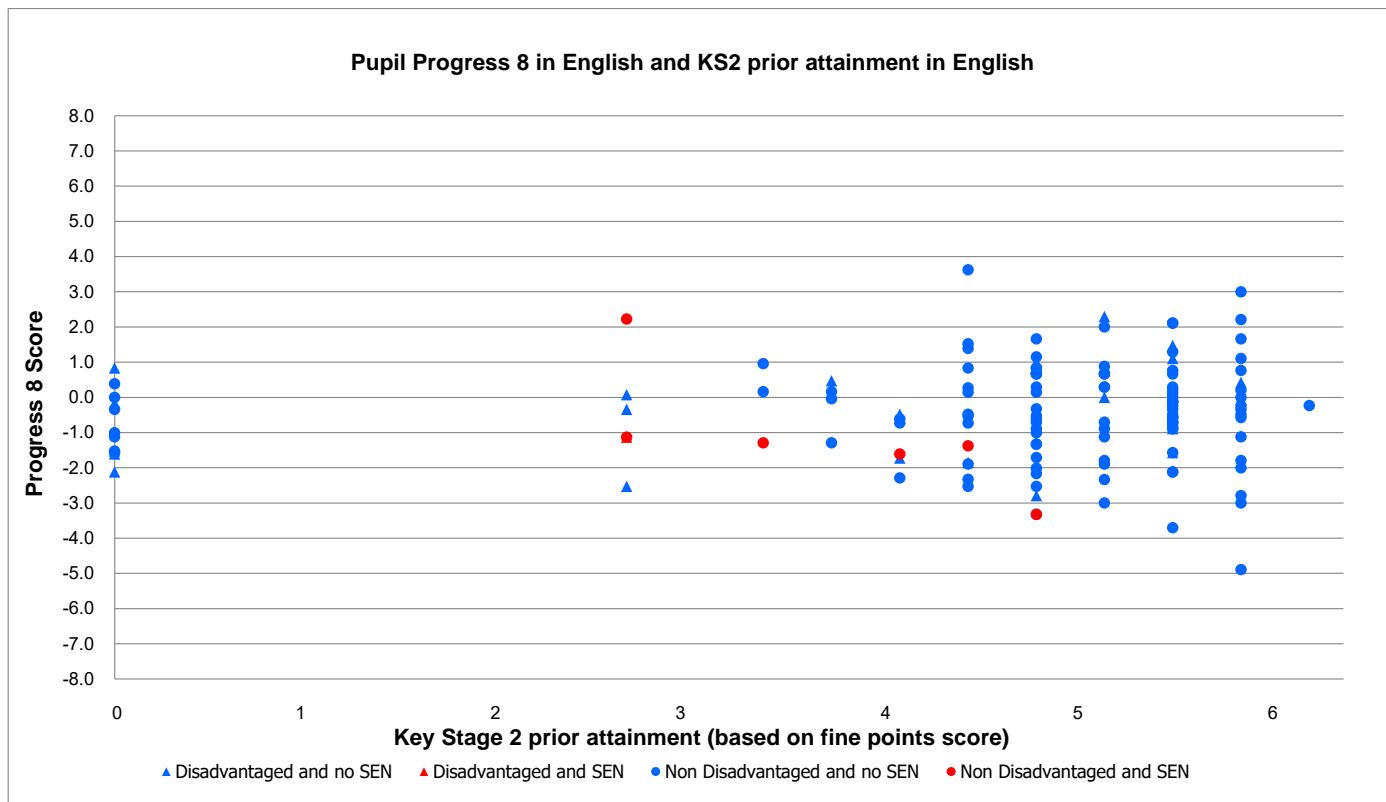


Progress 8 Score by prior attainment group (for Progress 8 overall and prior attainment in mathematics)

KS2 Prior Attainment	2.99 or below	3.0 - 3.99	4.0 - 4.99	5.0 - 5.66	5.67 or above
Cohort	5	18	78	33	-
All Pupils	-0.43	-0.09	-0.23	-0.48	-
Disadvantaged pupils	-0.78	-0.02	-0.15	-1.75	-
SEN pupils	-0.18	-0.98	-1.48	-	-
Other pupils	0.10	-0.12	-0.25	-0.31	-

11. Progress Scatterplots - Prior Attainment and Progress

Key Stage 4 2017/18

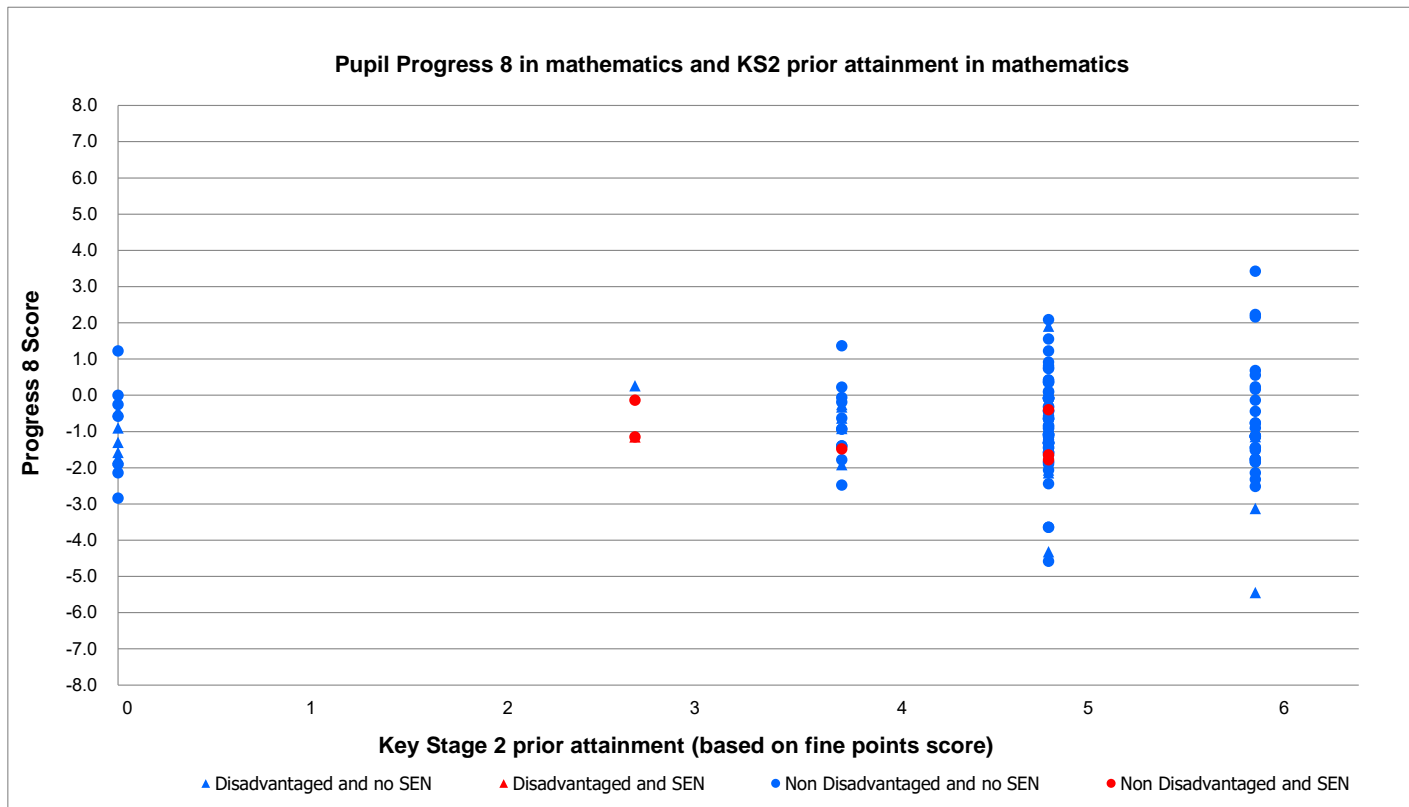


Progress 8 Score by prior attainment group (for Progress 8 in English and prior attainment English)

KS2 Prior Attainment	2.99 or below	3.0 - 3.99	4.0 - 4.99	5.0 - 5.66	5.67 or above
Cohort	6	14	59	54	1
All Pupils	-0.48	-0.55	-0.45	-0.36	-0.24
Disadvantaged Pupils	-0.98	-0.28	-0.46	-0.11	-
SEN Pupils	-0.02	-1.46	-2.36	-	-
Other pupils	0.54	-0.66	-0.44	-0.41	-0.24

11. Progress Scatterplots - Prior Attainment and Progress

Key Stage 4 2017/18

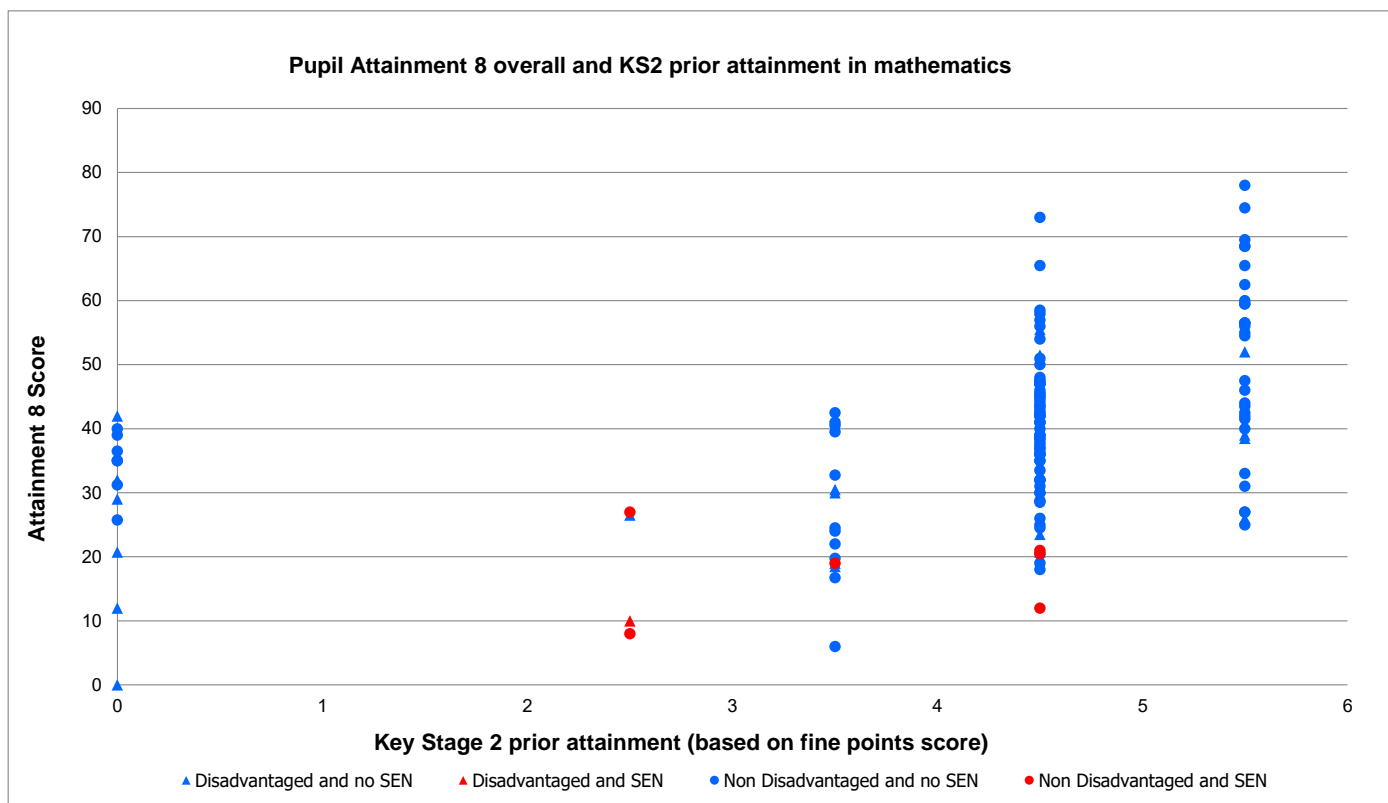


Progress 8 Score by prior attainment group (for Progress 8 in mathematics and prior attainment in mathematics)

KS2 Prior Attainment	2.99 or below	3.0 - 3.99	4.0 - 4.99	5.0 - 5.66	5.67 or above
Cohort	5	18	78	33	-
All Pupils	-0.78	-0.73	-0.82	-0.94	-
Disadvantaged Pupils	-0.87	-0.58	-1.11	-2.62	-
SEN Pupils	-0.81	-1.48	-1.27	-	-
Other pupils	-0.64	-0.80	-0.77	-0.71	-

11. Progress Scatterplots - Prior Attainment and Progress

Key Stage 4 2017/18

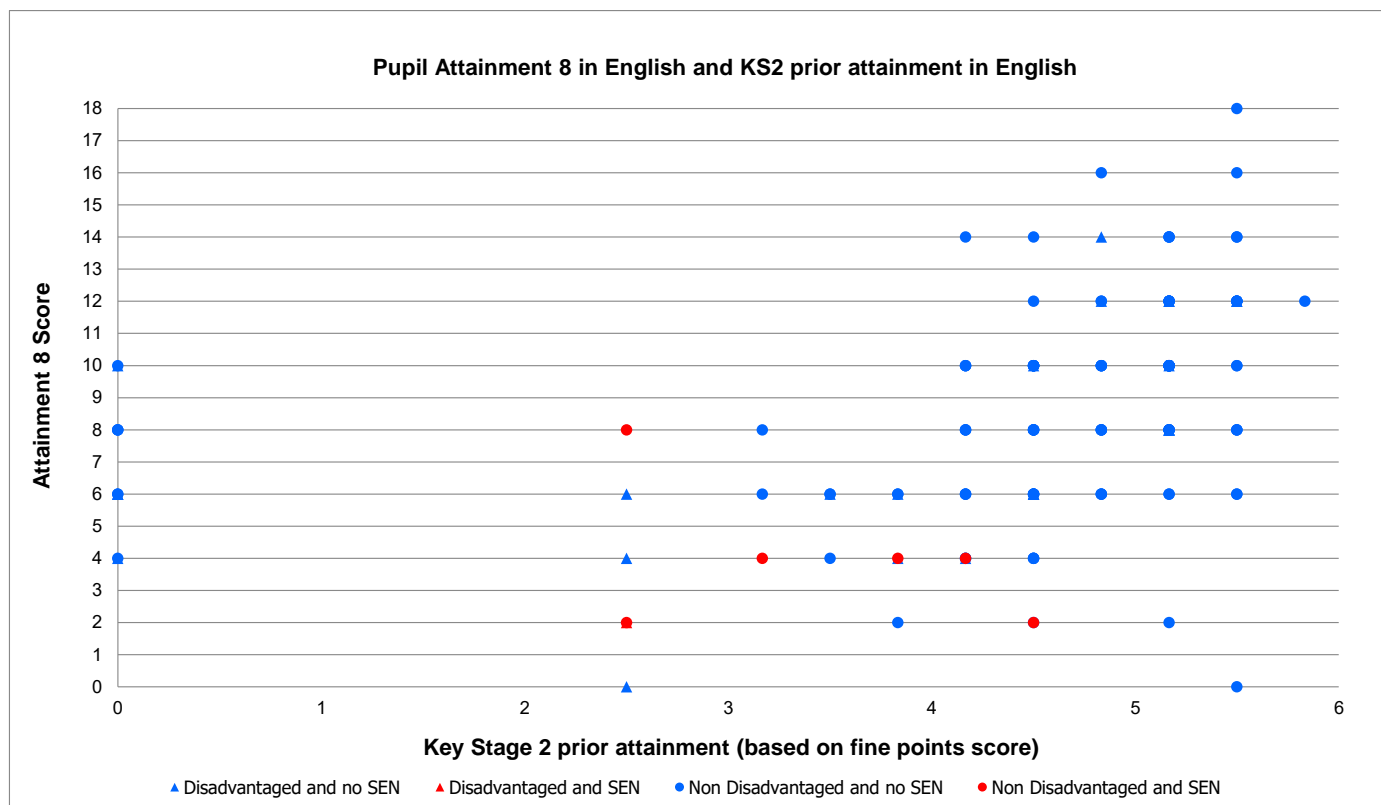


Attainment 8 Score by prior attainment group (for Attainment 8 overall and prior attainment in mathematics)

KS2 Prior Attainment	2.99 or below	3.0 - 3.99	4.0 - 4.99	5.0 - 5.66	5.67 or above
Cohort	5	18	78	33	-
All Pupils	14.3	28.0	39.4	49.9	-
Disadvantaged Pupils	12.2	29.4	38.5	38.9	-
SEN pupils	15.0	19.0	17.8	-	-
Other pupils	17.5	27.4	39.5	51.4	-

11. Progress Scatterplots - Prior Attainment and Progress

Key Stage 4 2017/18

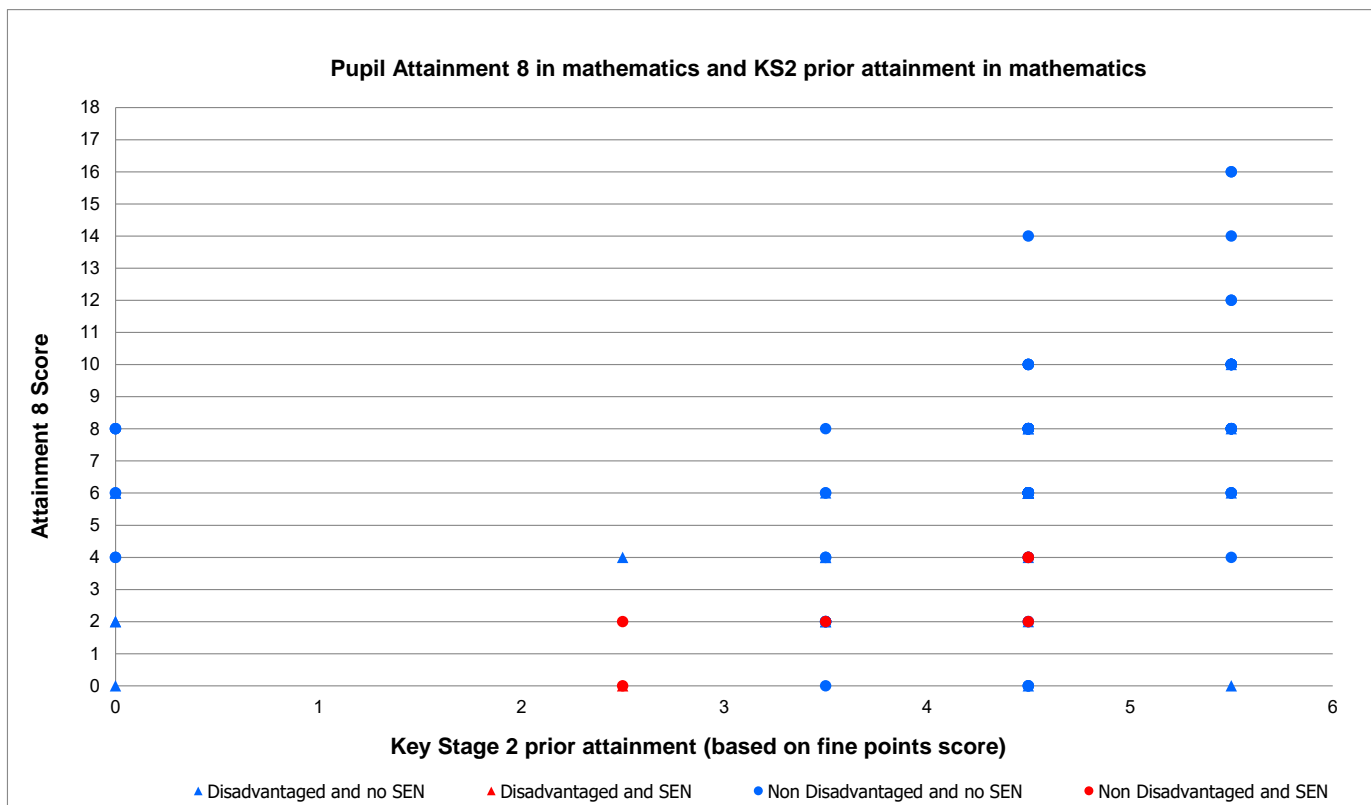


Attainment 8 by prior attainment group (for Attainment 8 in English and prior attainment in English)

KS2 Prior Attainment	2.99 or below	3.0 - 3.99	4.0 - 4.99	5.0 - 5.66	5.67 or above
Cohort	6	14	59	54	1
All Pupils	3.7	5.4	8.0	10.1	12.0
Disadvantaged pupils	3.0	6.0	8.0	10.0	-
SEN pupils	4.0	4.0	3.0	-	-
Other pupils	5.0	5.2	8.0	10.1	12.0

11. Progress Scatterplots - Prior Attainment and Progress

Key Stage 4 2017/18



Attainment 8 Score by prior attainment group (for Attainment 8 in mathematics and prior attainment in mathematics)

KS2 Prior Attainment	2.99 or below	3.0 - 3.99	4.0 - 4.99	5.0 - 5.66	5.67 or above
Cohort	5	18	78	33	-
All Pupils	1.2	3.6	6.3	9.0	-
Disadvantaged pupils	1.3	4.0	5.3	6.0	-
SEN pupils	0.7	2.0	3.3	-	-
Other pupils	1.0	3.3	6.5	9.4	-

12. School Static and Contextual Data

Key Stage 4 2017/18

Static Data

School Type	
District	

Contextual Data - Percentages

	2015/16	2016/17	2017/18
FSM Eligible %	9.5	11.1	11.9
FSM Eligible % Y11	11.6	9.4	9.0
FSM Ever6 %	21.2	24.8	27.4
FSM Ever6 % Y11	20.5	16.8	20.5
Disadvantaged %	22.0	25.9	28.1
Disadvantaged % Y11	21.9	20.1	20.5
Pupil Premium %	23.0	26.8	29.1
Pupil Premium % Y11	23.3	20.1	23.3
Pupil Premium with SEN %	1.3	1.2	0.9
Pupil Premium with SEN % Y11	2.1	1.3	0.7
SEN Support %	0.2	0.8	0.1
SEN Support % Y11	1.4	0.0	0.0
SEN S / EHCP %	3.3	3.2	3.1
SEN S / EHCP % Y11	2.7	4.7	4.8
First Language Not English %	7.9	9.2	9.4
First Language Not English % Y11	4.8	8.1	4.1
White British %	84.9	81.7	81.2
White British % Y11	87.7	81.9	86.3
Non White British %	14.7	17.9	18.5
Non White British % Y11	12.3	16.8	13.7
Mobility % Y11	17.7	14.8	18.5

Contextual Data - Numbers

	2015/16	2016/17	2017/18
NOR	808	849	809
NOR Y11	146	149	146
FSM Eligible	66	80	82
FSM Eligible Y11	17	14	13
FSM Ever6	147	179	189
FSM Ever6 Y11	30	25	30
Disadvantaged	152	187	194
Disadvantaged Y11	32	30	30
Pupil Premium	159	194	201
Pupil Premium Y11	34	30	34
Pupil Premium with SEN	9	9	6
Pupil Premium with SEN Y11	3	2	1
SEN Support	2	7	1
SEN Support Y11	2	0	0
SEN S / EHCP	27	27	25
SEN S / EHCP Y11	4	7	7
First Language Not English	64	78	76
First Language Not English Y11	7	12	6
White British	686	694	657
White British Y11	128	122	126
Non White British	119	152	150
Non White British Y11	18	25	20

Deprivation

	2015/16	2016/17	2017/18
School IMD Average Score	16.2	17.1	17.4
School IMD Kent Rank (Secondary)	59	54	52

IMD = Index of Multiple Deprivation based on pupils' home postcodes

NB: Where IMD Rank is 1 = Most Deprived

All contextual data is from the January School census

Non White British includes pupils classed as White Other in the Census

13. Ofsted Inspection Outcomes

Key Stage 4 2017/18

Date of last inspection	27 January 2016
Link to Ofsted report	_____
Overall effectiveness	2
Achievement of pupils	2
Quality of teaching	2
Behaviour and safety of pupils	2
Leadership and management	2
Main Findings	
Recommendations / Next steps	