

# Countywide SENCO Forum- 15<sup>th</sup> and 23<sup>rd</sup> May 2024

Siobhan Price- Assistant Director, School Inclusion (KCC)

Ruth Gately- SEND Specialist Adviser (The Education People)

Emily Duddy- Education Specialist, Community Paediatrics Team (NHS)

Samantha Avison-Williams- SEND Quality Assurance and Practice  
Development Officer (KCC)

Sharon McLaughlin- SEND Engagement, Operations and Assurance Manager  
(KCC)

Teri Rutherford- SEND Support and Inclusion Manager (KCC)

Rory Abbott- Project Lead (The Education People)

# Housekeeping

- Rory Abbott- Project Lead
  - Please change your name via the Participant tab so that we can see who is present;
  - You will be muted but if you have questions then please type them in the chat box using full sentences. If we can answer your question during the session we will but if not we will take a note of your question and send out a response in the Q+A document post-session;
  - If there are any issues with your session within the main body of the presentation or within a breakout room, then please close the session and click on the link to start again. One of us will let you back in and get you connected back up to your session;
  - If you registered for the session using CPD Online then you should have a copy of these slides, the agenda and any other materials you need for these sessions. If you cannot see the slides that we are sharing then please refer to those instead. If you haven't received the pre-session materials then please email [rory.abbott@theeducationpeople.org](mailto:rory.abbott@theeducationpeople.org) so the issue can be investigated.

# Agenda

Item	Topic	Lead/Time
1	Welcome/Housekeeping (Rory Abbott- Project Lead, TEP)	5 mins
2	Community Paediatrics Team- An Introduction (Emily Duddy- Education Specialist, Community Paediatrics Team)	10 mins
3	The Local Offer- Changes, updates and how it can be used (Sharon McLaughlin- SEND Engagement, Operations and Assurance Manager, KCC)	10 mins
4	SEN inclusion support in schools (Siobhan Price- Assistant Director, School Inclusion, KCC)	20 mins
5	Area Workshops- Continuum of Provision (Siobhan Price- Assistant Director, School Inclusion, KCC)	10 mins
6	EHCP Quality Assurance Update (Sam Avison-Williams- SEND quality Assurance and Practice Development Officer)	15 mins
7	Training offer and SENCO Conference 2024 (Ruth Gately- Specialist SEND Lead Adviser, TEP)	10 mins
8	SEN Inclusion Adviser/SENCO Surgeries (Teri Rutherford- SEND Support and Inclusion Manager, KCC)	5 mins
9	Conclusion and Evaluation (Ruth Gately- Specialist SEND Lead Adviser, TEP)	5 mins



**Kent Community Health**  
NHS Foundation Trust

# Building bridges between health and education

Presented by- Emily Duddy Education Specialist



## Introduction:

I am Emily Duddy, I have been a

- Teacher for 18 years
- SENCo for 10 years
- NHS Specialist teacher for 2 years

Current job remit:

I currently work for KCHFT Community Paediatrics, this covers North and West Kent.  
My job is to build relationships between Health and Education.

# Community Paediatric Education Specialist

- To build relationships between Health and Education
- To be a point of contact for schools, when all endeavours have been made and exhausted to support children waiting for assessment.
- To deliver training to school staff around Neurodivergence, and provide support for children waiting on our pathways.
- To support the Community Paediatric staff in understanding school processes.

# Community Paediatrics Updates:

## Stratification:

Stratification has taken place for all children waiting on the Social Communication pathway. The Criteria has been agreed by all providers in Kent and Medway.

### Category 1 (Legal/statutory requirement to prioritise)

- Children whose parents are in the armed forces (Armed Forces Covenant) or any children at risk of placement breakdown a safeguarding concern.
- Children under 5 years if non-verbal or have related co-morbidity.

### Category 2

- Children Looked After (at the point of referral); to include adopted and NGO
- Children/young people who are under child protection arrangements or special guardianship.
- Children/young people post adoption (due to risk of adoption breakdown)
- Children undergoing statutory assessment (for an Education, Health and Care Plan or specialist educational placement) where a diagnosis is required to inform specialist placement.
- children who require a diagnosis to access specialist social care teams
- Children under 5 years [would be seen for a general developmental assessment to ensure they are not added to the ND pathway unnecessarily and for some children there would be a 'watch and see' approach taken with developmental reviews as required]

## Children who do not meet the Kent and Medway criteria:

Most children on the Social Communication pathway, will not meet the above criteria.

They will be seen in date order.

This means from the date they were added to the Social Communication pathway.

They have however been reviewed to ensure that they have been placed on the correct pathway.

1133 families were contacted of children who had been waiting for 12 months or more for an assessment. They were asked if they would like their child to remain on the Social Communication Pathway.

73 were discharged after the families stated they no longer wanted an appointment due to an improvement in their child's presentation or a private diagnosis. 54 were discharged as there was no contact made after 3 attempts, via a variety of means- text, letter, email or phone call from the service to contact the families.



## Nurse Led Assessments:

Nurse Led assessments have been introduced to support and reduce waiting times.

These began as a pilot, but it has been quickly realised that they have had a hugely impactful influence on patients and waiting times.

They are now set to be an every day staple of the Community Paediatric offer.

If a child in your school has or have been offered a Nurse Led assessment this is what it will look like.

## Nurse Led assessments

This virtual appointment is taken by one of more experience nurse practitioners.  
During the appointment, information will be gathered around-

- Current health issues.
- Why the referral was made. Has this changed over time? Has the presentation improved, or worsened?
- Home challenges.
- Schooling

## Onward referrals:

From the information gathered at this appointment onward referrals can be made to support the child:

- Kent school Health
- QB testing- to support ADHD diagnosis
- SNAP questionnaires from home and school, Nursey/school report and Connors Questionnaires can all be requested.
- Internal referrals to the Social Prescriber
- Internal referrals to the Education specialist
- Guidance around sleep can be given.

## The initial assessment face to face appointment:

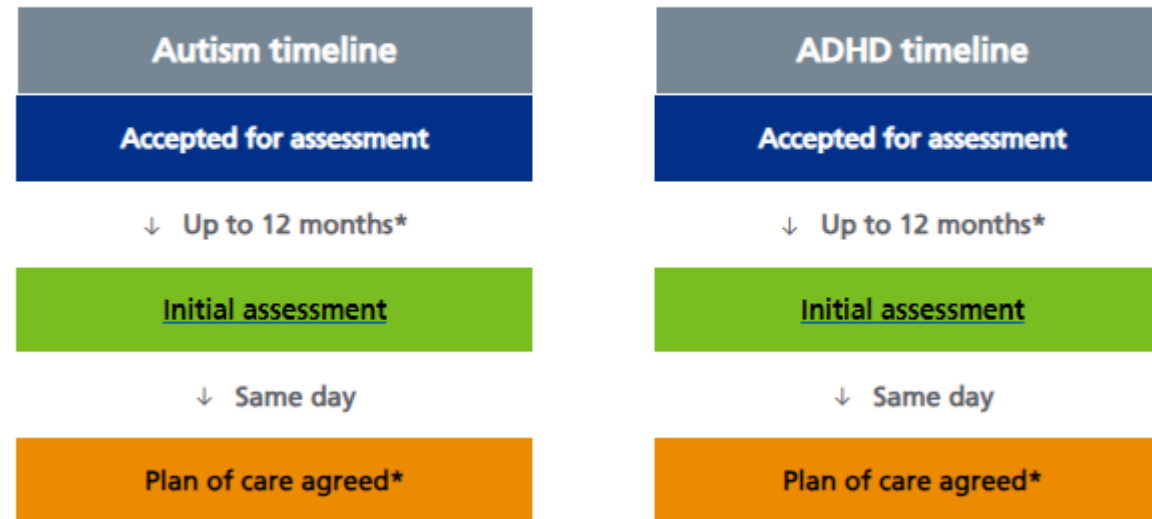
During the NLA all of the additional information can be gathered and uploaded to the child's file.

During the initial assessment appointment with the Paediatrician, all the information can be reviewed.

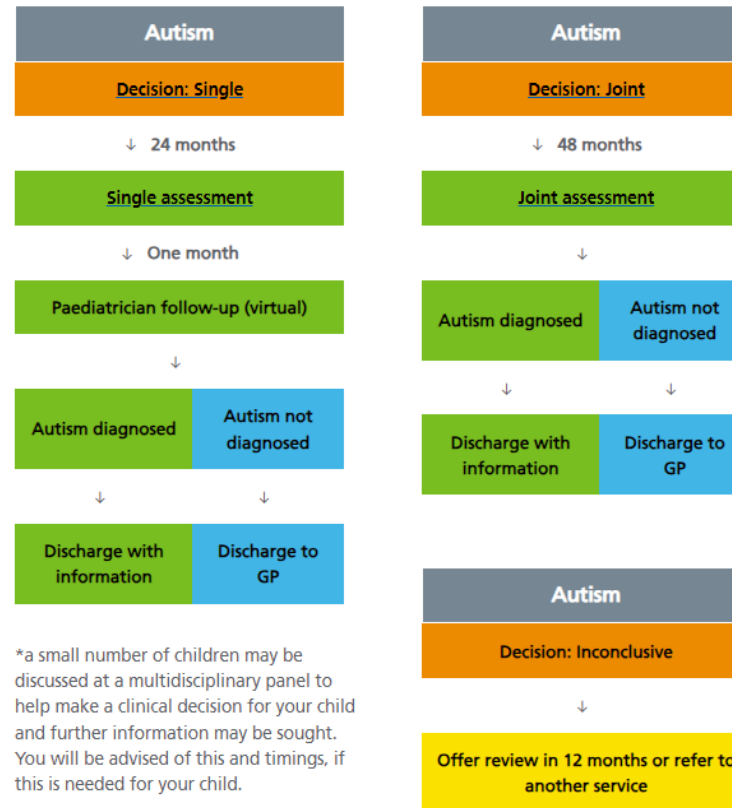
It will provide a more up-to-date picture of what has been going on for the child, and feed really well in to the appointment.

# Time lines: [Paediatric timelines | Kent Community Health NHS Foundation Trust \(kentcht.nhs.uk\)](https://www.kentcht.nhs.uk/paediatrictimelines)

Flowcharts showing our waiting times.

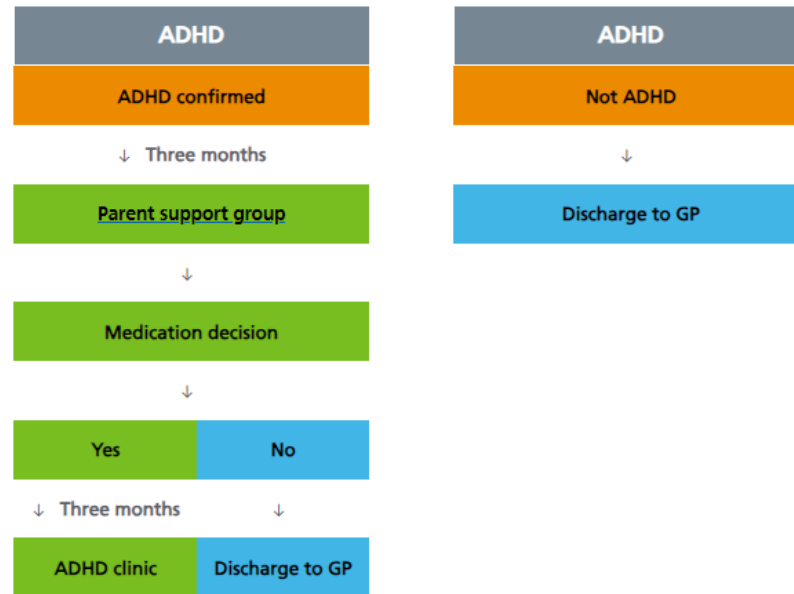


# Time lines: Social Communication pathway



# Time lines: ADHD

## ADHD pathway



# The SEND Information Hub, Kent's Local Offer

[Special educational needs and disabilities \(SEND\) - Kent County Council](#)



## Sharon McLaughlin

SEND Engagement, Operations and Assurance Manager  
May 2024





# The website and Directory

[Special educational needs and disabilities \(SEND\)](#)

[Local Kent Directory](#)

[kent-family-hub](#)



<p><b><a href="#">Contact us</a></b></p> <p>Get in touch with our SEND enquiries hub or a support service for advice and information.</p>	<p><b><a href="#">I think my child might need some extra help</a></b></p> <p>See who to talk to and what help is available if you think your child has special educational needs, including how to request an EHC plan.</p>	<p><b><a href="#">Types of special educational needs</a></b></p> <p>Learn about autism, speech and language, learning, physical, emotional, and sensory support in education and health.</p>
<p><b><a href="#">Children under 5</a></b></p> <p>Get information about services such as Portage and Children's Centres and what help is available in your child's early childhood setting.</p>	<p><b><a href="#">School age children</a></b></p> <p>Learn what support is available at your child's school, including how to apply for transport and moving from primary to secondary.</p>	<p><b><a href="#">Young people (16 to 25)</a></b></p> <p>Explore what support is available after you turn 16, from education to getting a job and becoming an adult.</p>
<p><b><a href="#">Parent support</a></b></p> <p>Explore what's available from your community, short breaks, days out, training and money support.</p>	<p><b><a href="#">Social care</a></b></p> <p>Learn about needs assessments, occupational therapy, and equipment/changes at home.</p>	<p><b><a href="#">Health and wellbeing</a></b></p> <p>Includes general health advice, annual health checks, young people support and healthcare plans.</p>
<p><b><a href="#">Rights for your child or young person</a></b></p> <p>Learn about you child or young person's employment, education and health rights.</p>	<p><b><a href="#">Listening to your voice and taking action</a></b></p> <p>Discover how we're listening to your feedback and improving our services.</p>	<p><b><a href="#">SEND strategies and policies</a></b></p> <p>Find out how we manage and improve special education and disabilities for children and young people.</p>



## Visit our SEND community directory

Discover hundreds of SEND support groups, clubs, sports, charities, and activities.

[Visit our directory >](#)

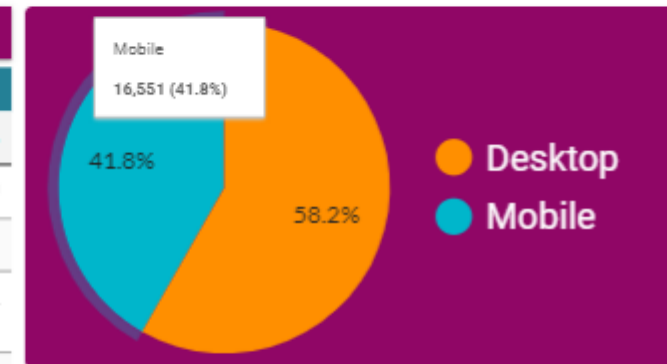
# Most viewed topics and how they were viewed

## SEND KPIs

1 Apr 2023 - 31 Mar 2024

### Page breakdown

Page title	Views
<b>Most frequently viewed pages</b>	
1. <b>Special educational needs and disabilities (SEND) - Kent County Council</b>	<b>49,818</b>
2. Contact our special educational needs and disability teams - Kent County Council	29,690
3. Special schools - Kent County Council	18,921
4. What happens during an education, health and care needs assessment - Kent County Council	16,782
5. Types of special educational needs - Kent County Council	15,510
6. What education, health and care plans are for - Kent County Council	13,029
7. Education health and care (EHC) plans - Kent County Council	12,415
8. Schools with specialist resource provision - Kent County Council	11,061
9. Social care support for your SEND child or young person - Kent County Council	10,376
10. Choose a school for your child with SEND - Kent County Council	9,987

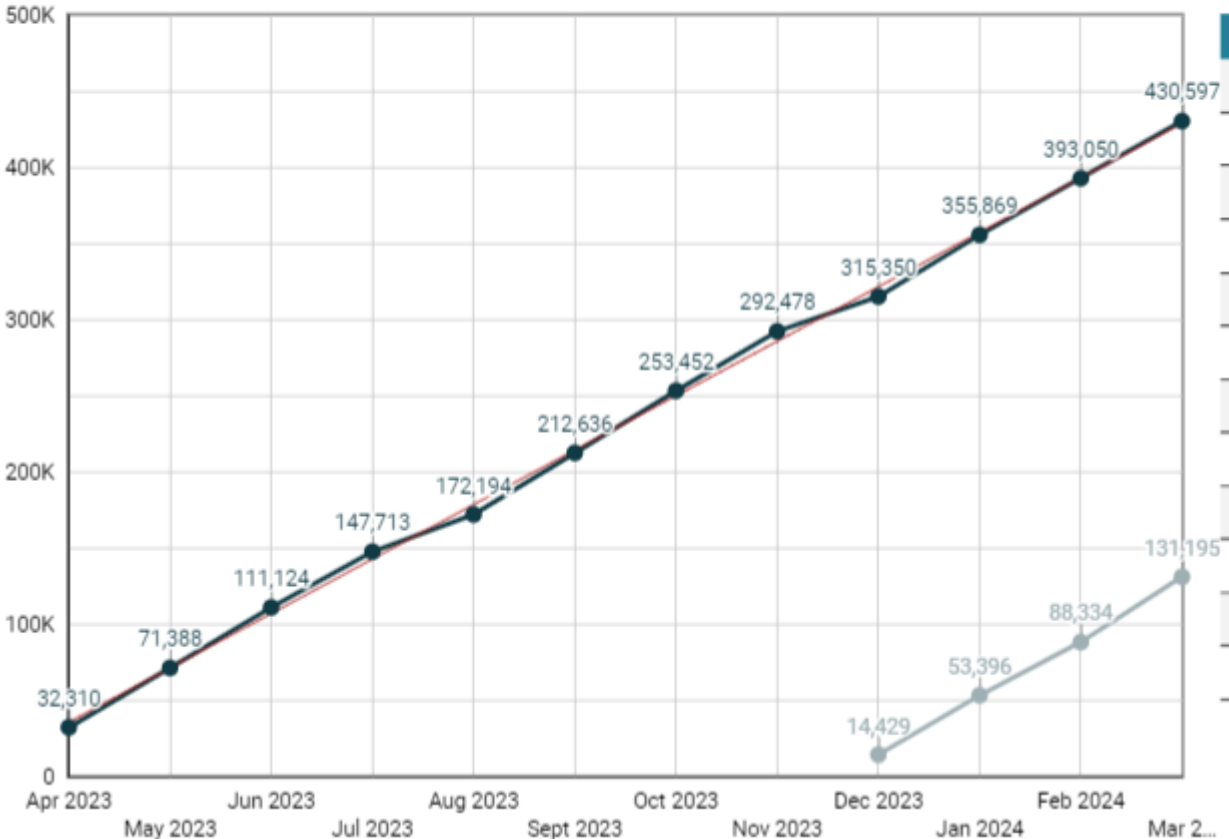


# Monthly and accumulative visits to the website over the last 12 months



## SEND KPIs 1 Apr 2023 - 31 Mar 2024

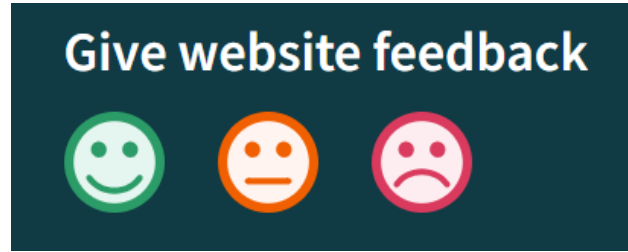
Pageviews



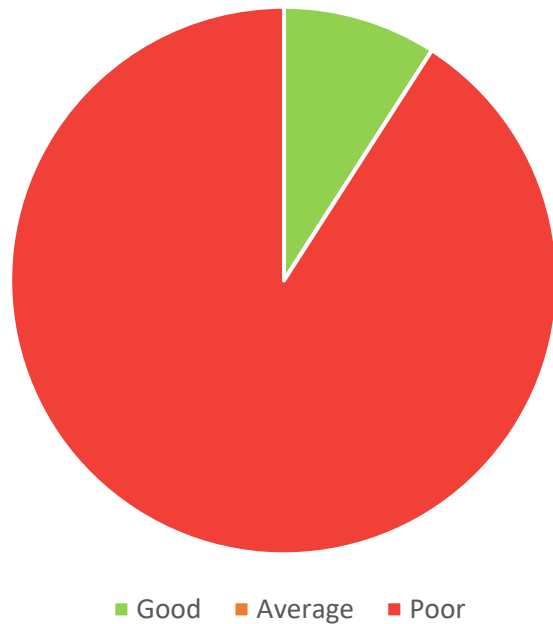
Month of year	Views	Views
Apr 2023	32,310	32,310
May 2023	39,078	71,388
Jun 2023	39,736	111,124
Jul 2023	36,589	147,713
Aug 2023	24,481	172,194
Sept 2023	40,442	212,636
Oct 2023	40,816	253,452
Nov 2023	39,026	292,478
Dec 2023	22,872	315,350
Jan 2024	40,519	355,869
Feb 2024	37,181	393,050
Mar 2024	37,547	430,597

Grand total null null

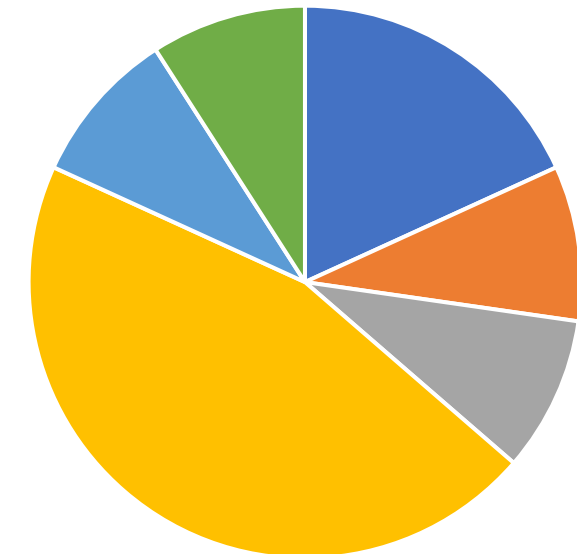
# Gov Metrics Feedback Breakdown



Gov Metrics Data



Gov Metric Themes



- Additional information needed
- Issue with other LA service
- Issue with online form
- Discontent with SEND Systems
- Communication with SEND Service issue
- positive feedback

[You said, we did - improvements to the SEND service - Kent County Council](#)

# SEN Inclusion in Schools

Countywide SENCO Forum  
15<sup>th</sup> & 23<sup>rd</sup> May 2024  
Siobhán Price

# Report on Localities consultation

- KCC's response to the consultation – published 9<sup>th</sup> May 2024.
- <https://letstalk.kent.gov.uk/locality-model-for-special-educational-needs-inclusion>
- Key area of response – clarity re 'predictable and exceptional' need.
- Terminology deemed to be unhelpful so 'continuum of need and provision'

# Area Workshops

## 1. Four area workshops. 9.00 – 2.30

- North - Tuesday 21 May – The Inn on the Lake, Shore, DA12 3HZ
- South - Friday 24 May – EKC Dover College, Maison Dieu Road, Dover, Kent, CT16 1DH
- East - Tuesday 4 June – The Spitfire Ground, St Lawrence, Old Dover Road, CT1 3NZ
- West - Friday 7 June. –Salomon’s Estate, Broomhill Road, Tunbridge Wells, TN3 0TG
- Wednesday 12 June – Venue TBC in central Kent - two workshops AM & PM:

If you have not registered for the area workshops and are still keen to be part of the work, [please complete details here](#) to register.

## 2. Agenda:

- LA updates
- Continuum of provision and need – mainstream/SRP/Special
- SRP secondary expansion

3. Main agenda item led by Dr Alison Ekins – thank you to all who have responded to Alison’s questionnaire.

# Kent PACT Webinars

- Kent Parents And Carers Together (KentPACT)
- Webinars being hosted by KentPACT
- Supporting parents to ask questions at school about SEN support, SEN registers, intervention – negate the need for EHCP
- Thank you to KentPACT for this piece of work to address many misconceptions from different parent groups.
- Slides used are being distributed with slide deck for SENCO forum.



# SEN Information Report

- SEN Information report – needs to be updated on an annual basis
- Group of school leaders working with KCC to develop a Kent wide template.
- This will support consistency among and between schools and will support the move to cluster working.
- Template will be launched in Term 6 – no need to do anything until template is released. Aim is for minimum bureaucracy.
- Will support transparency for parents also – parents are being told to compare reports on local schools to support decision making



# SEND Quality Assurance & Practice Development:

EHCP Quality Assurance Update

Samantha Avison-Williams  
SEND Quality Assurance &  
Practice Development Officer

# Overview:

- Invision Data: March 2024
- Section A
- Education Advice (Appendix 2)
- Practice Development: QAPD Service

# Invision Data: March 2024



- Invision: monthly audit of Final EHC plans
- Audit purpose: to identify what we have done well & what we can do better
- Scoping: approximately 10% of Final plans published that month; plans which have previously been audited at Draft stage

## **March 2024 Audit Findings**

- 69.2% of plans were graded Good (national average = 55.7%)
- Plans had improved from Draft to Final stage

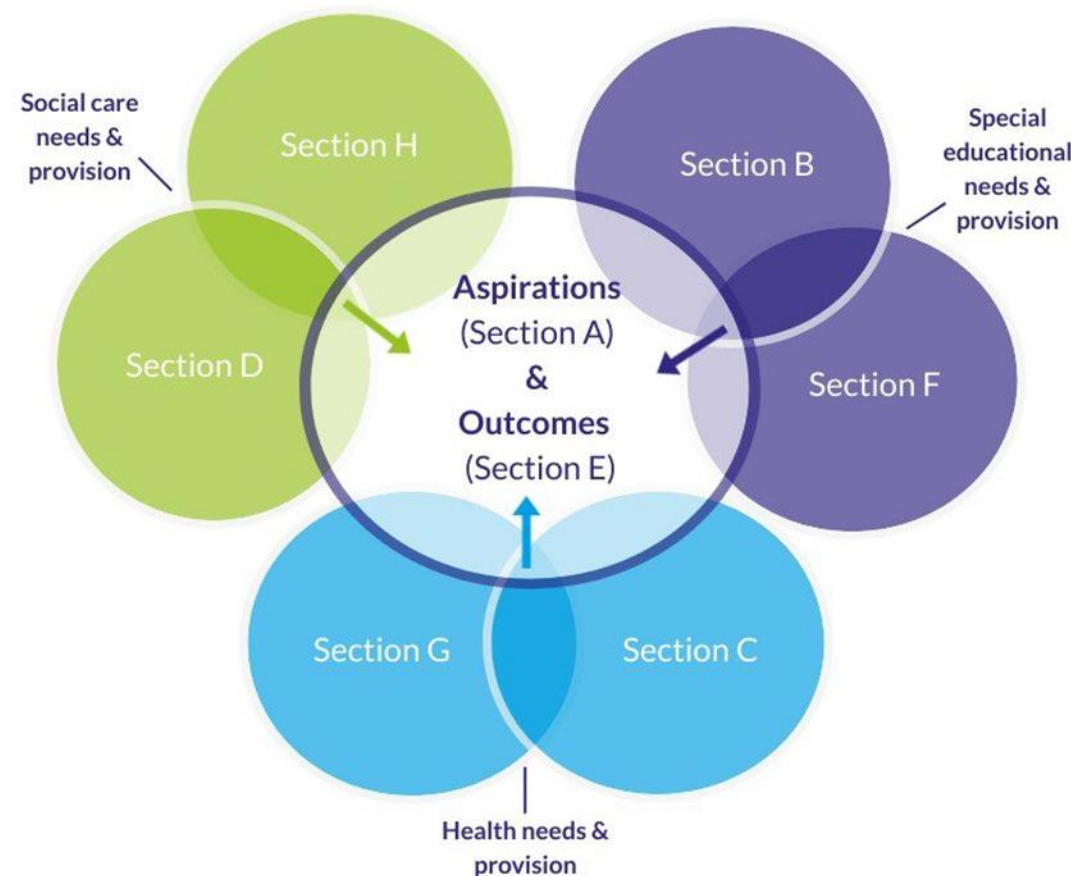
# SENCo Forum December 2023: Improving the Quality of EHCP's

***The Golden Thread*** = the connection between aspirations, needs, outcomes and provision.

Where Section A is blank or insufficiently complete, there can be no credible golden thread

School-based professionals often have:

- the most holistic view & experience of a child or young person in comparison to other professionals
- valuable insight into a child or young person's lived experience over a prolonged period of time
- Secure & established relationships with families



# Section A:

## **Invision Audit Findings: Section A**

- (Feb 24) 71.4% graded Good
- (March 24) 76.5% graded Good

## **Next Steps:**

- Continued support of Education to drive further improvement
- Multi-Agency Audit with a focus on Section A with a view to create: (1) alternative methods to record the child/young person's voice so that it is them we are hearing and putting at the centre of their EHC plan; (2) guidance for parents/carers on completing the Appendix 1 template so that they understand the importance of it and how necessary it is to create an impactful EHC plan

# Education Advice (1):



## **Concern:**

‘Completing the Appendix 2 takes a huge amount of time & the information isn’t used in the plan anyway’

## **Fact:**

Education Advice plays a vital role in the assessment & decision-making process. It directly supports the completion of the Assessment Decision Form (ADF).

## **Panel Audit March 2024:**

- 74% of ADF’s put forward to Panel were graded Good or Outstanding

# Education Advice (2):

## Ongoing Area for Development: Attainment & Progress Data

- Schools/settings use a range of 'in-house' measures & descriptors which can be difficult for Assessment Officers (AO) to interpret
- Where boxes/sections are incomplete or left blank, it is difficult for an AO to form an accurate picture of the child or young person's attainment or progress
- A combination of quantitative data & qualitative narrative are most effective at providing a clear picture



# Practice Development: QAPD Service



**Improvement & practice development is a shared responsibility.**

The QAPD Service is driving improvement by working with Assessment Officers

via:

- Workshop Wednesday's
- New & updated guidance
- Introduction of standardised wording

# SEND Training Offer and CPD Opportunities 2024/25

Ruth Gately- Specialist SEND Lead Adviser (The Education People)

# Training Offer 2024/25 and SENCO Conference 2024

- Spotlight on Social, Emotional and Mental Health (SEMH) Training- 6<sup>th</sup> June 2024, 16:00-17:00, via Zoom- [Spotlight on Social, Emotional and Mental Health \(SEMH\) \(theeducationpeople.org\)](https://theeducationpeople.org)
- How Mainstream Primary Schools Support Children with SEND- 9<sup>th</sup> July 2024, 10:00-12:00, via Zoom- <https://forms.office.com/e/mj9C5mcdi2>
- How Mainstream Secondary Schools Support Children with SEND- 10<sup>th</sup> July 2024, 10:00-12:00, via Zoom- <https://forms.office.com/e/0h2tNMEPiK>

# Training Offer 2024/25 and SENCO Conference Tuesday 8<sup>th</sup> October 2024 (part 2)

The Education People will continue to deliver **free** SEND training to a range of audiences throughout the academic year 2024/25. Audiences will include:

- Teachers
- School Leaders
- Pastoral Staff
- Families (focussed on Phase Transfer)
- Governors

Opportunities and links to register will be shared in the next few weeks. Please encourage staff within your school to attend. Themes of the training will include HQT and will support building a team around the SENCO.

# Training Offer 2024/25 and SENCO Conference 2024 (part 3)

## Kent SENCO Conference 2024- Celebrating Inclusion in Mainstream Settings

- Free to SENCOs from mainstream primary and secondary schools based within Kent.
- Due to popularity, only one delegate per school can register.
- Spaces are limited so register soon [Kent SENCO Conference 2024 \(theeducationpeople.org\)](https://theeducationpeople.org)
- Keynote presentation from Daniel Sobel, author of 'The Inclusive Classroom'
- Marketplace, workshops and further line up to be announced soon.
- KCC employees, Health employees and STLS, information will be circulated as to how you will be able to attend so please don't register.

# SEN Inclusion Adviser Surgeries for SENCOs



# SEN IA SEN Co Surgery Pilot



Our SEN IA team support is available by direct contact from schools to their named link SEN IA.

We have recently made this even easier to access by introducing weekly SEN IA Surgeries for SENCOs.

# Why are we introducing SEN IA Surgeries?



To ensure that

- All schools to have had an opportunity talk to a SEN IA about SEND provision in their school
- To provide communication opportunities to share information or ask for information district wide, such as reminders for Countywide SENCo Forum.
- Provide an opportunity to prepare and build capacity for SENCos and schools, but not to replace provision planning meetings for individual children or cohorts for phase transfer



# Why are we introducing SEN IA Surgeries?

(part 2)



## Weekly SENCO Surgeries

SEN IA Surgeries were piloted in Ashford District from the beginning of November 2023.

- For SENCOs to have a regular weekly opportunity to speak with a SEN Inclusion Adviser.
- Offer SENCOs a weekly space for discussion which may reduce or divert the need for longer meetings and associated travel, which in turn would also increase capacity.
- Provide an opportunity for SENCOs to be able to talk through any immediate issues with SEN IAs.
- To offer support to schools when they are asking for support following a Decline to Assess when this has been requested from the school.
- Additionally, a SEN IA can ask a SENCO to join a surgery following a parental concern about provision.

# Ashford SEN IA SENCo Surgery Pilot

- From the beginning of November to the end of March 2023, 11 surgeries were held, offering 18 hours of support to SENCos for schools in that district.
- A total of 32 schools took up the opportunity to speak with the SEN IA. Half of those schools, booked a slot on two or more occasions.
- SENCos have commented that it's a lonely role, and it's great to have an opportunity to talk through a situation. They have also commented that it's great to have something additional offered when they are feeling the effect of cutbacks.
- A knock-on impact for Ashford has been that there have been fewer invitations to attend in-school meetings. It is likely that the surgeries offer an opportunity for preparation and confidence-boosting for the SENCo for such meetings.

# SEN IA SENCo surgeries from Term 5

- Your link SEN Inclusion Adviser will send you dates weekly for the surgery
- You will receive a record of the discussion immediately following the surgery
- You can attend surgeries as often as you need
- These are for individual SENCos not groups
- The days that surgeries are offered will vary

# Health Advice and Support at EHCP Annual Review Survey.

Health Support at EHCP Annual Review.



<https://forms.office.com/e/H1baBfgeSb>

# Session Feedback and Evaluation

- Please take the time to complete the evaluation- the link is below

<https://forms.office.com/e/K6krFTZk4d>

- The link for the evaluation will be posted in the chat by either Rory Abbott or Ruth Gately. Please click on it now or scan the QR Code and give us your feedback.



# Thank You for listening and taking part

If you have any questions then please email  
[rory.abbott@theeducationpeople.org](mailto:rory.abbott@theeducationpeople.org) with the  
subject title of Countywide SENCO Forum  
Query