

Producing the School Census Autumn 2024 Return

English Nursery Schools

applicable to 7.218 onwards

Handbook

NOTE: The contents of the graphics (dates, names, panel numbers, etc.) are examples only of what you might expect to see when using SIMS to produce the School Census Return.

C | Contents

01 Introduction	1
Overview	1
How has the School Census Autumn Return Changed since Last Year?	2
Where to Find More Information.....	2
Steps to Producing the School Census Return.....	3
02 Preparing for the School Census Autumn Return	5
Setting SIMS Permissions	5
What Version of SIMS is Required?.....	6
Preparing Data for the School Census Return	6
03 Producing the School Census Autumn Return	9
Creating a New School Census Return	9
Configuring the Census Folder	11
Specifying the Security Message for Reports	12
Editing Census Details	12
Calculating All Details	13
Editing School Information	14
Information for Academies	15
Editing Early Years.....	15
Recording Early Years	17
Using the Status to determine if Hours at Setting or Funded Hours are recorded	19
Editing Pupils with Top-Up Funding	19
Editing Pupil Post Looked After Arrangements	21
04 Completing the School Census Autumn Return	25
Creating and Validating the School Census Return	25
Resolving Validation Errors and Checking Queries	26
Producing Detail Reports	28
Generating Detail Reports.....	30
Printing a Report from your Web Browser	31
Deleting Temporary Web Browser Files	31
Producing the Summary Report	32
Generating the Summary Report.....	32
Editing an Unauthorised Return	33
Authorising the Return	33
Submitting the Return	35
Retrieving Authorised Census Return Files	36

Copying a Return	37
Deleting an Unauthorised Return.....	38
Index	39

01 | Introduction

Overview.....	1
How has the School Census Autumn Return Changed since Last Year?	2
Where to Find More Information.....	2
Steps to Producing the School Census Return.....	3

Overview

This handbook provides the information needed by Nursery schools in England to complete the School Census Autumn Return.

The School Census Autumn Return is required to be completed by maintained Nursery schools, Primary schools, Middle schools, Secondary schools, All-Through schools, Special schools, Pupil Referral Units (PRUs), City Technology Colleges (CTCs) and Academies (including free schools) in England. Non-maintained Special schools are also required to submit the return.

Currently, there are three School Census returns each year (i.e. Spring, Summer and Autumn), which collect detailed information about school characteristics and pupil details. Different data is collected depending on which return is being prepared, and your school phase.

A list of items collected from Nursery schools in England for the School Autumn Census is available in a later section of this handbook.

NOTE: The contents of the graphics (dates, names, panel numbers, etc.) are examples only of what you might expect to see when using SIMS to produce the School Census Return.



Additional Resources:

Preparing for the School Census Autumn Return handbook



More Information:

Preparing Data for the School Census Return on page 6

How has the School Census Autumn Return Changed since Last Year?

For the latest School Census dates, up-to-date guidance, enhancements and supporting information, please refer to the [Producing the School Census Autumn 2024 Return handbook](#).

Where to Find More Information

Online help can be accessed by pressing **F1** or clicking the applicable **Help** button in SIMS.

A wide range of documentation is available from the SIMS **Documentation Centre**, including handbooks, quick reference sheets and tutorials. Click the **Documentation** button located on the top right-hand side of the SIMS **Home Page**, select the required category, then select the document you require.

Additional Information

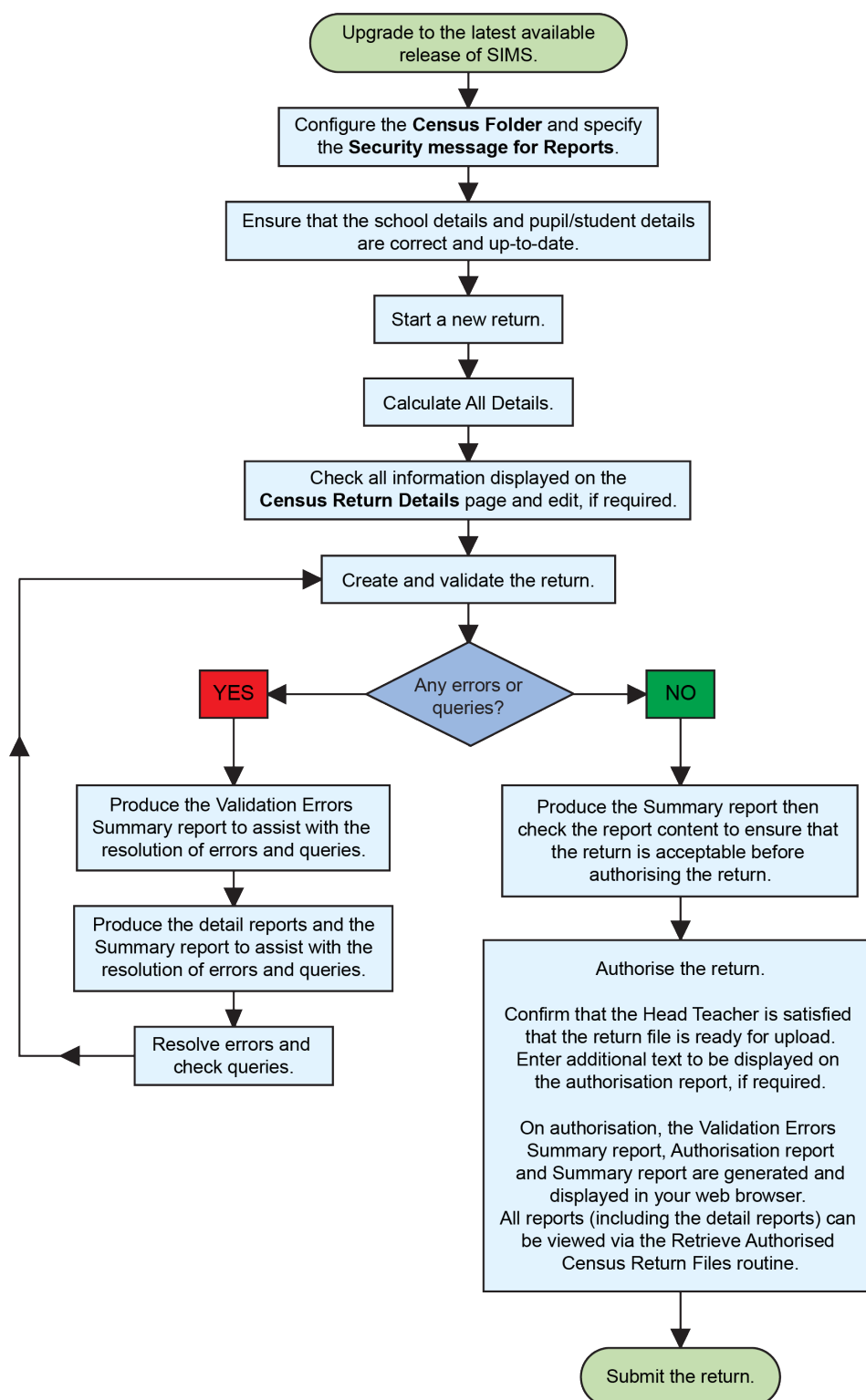
In addition to this handbook, a preparation guide that outlines how to prepare your data for the School Census is also available from the [SIMS Statutory Returns Homepage](#).

You are strongly advised to check the following SIMS Newsfeeds because they provide a range of explanatory text, presentations, videos and spreadsheets that you may find useful. These newsfeeds are updated regularly to provide the latest news and answers to enquiries. In particular, the newsfeeds for School Census provide the latest iteration of our spreadsheet for DfE validation rules and SIMS solutions.

The [SIMS Newsfeed - Main Hub](#) provides links to all the statutory returns-related newsfeeds.

Steps to Producing the School Census Return

The process of producing the School Census can be separated into several steps, some of which might need to be repeated to eliminate validation errors and queries.



02 | Preparing for the School Census Autumn Return

Setting SIMS Permissions	5
What Version of SIMS is Required?	6
Preparing Data for the School Census Return	6

Setting SIMS Permissions

The following permissions apply to users who deal with returns.

Running the Return

To run the return, you must be a member of one of the following user groups in System Manager:

- Returns Manager
- Returns Operator.

Editing and Preparing Data

Users who edit and prepare data must have permission to access additional areas of SIMS, e.g. pupil details, school details, etc. These users must be a member of the user groups applicable to the areas they are editing (please see *Where to find More Information about Permissions* on page 5).

Permissions Required to Import a Revised Fileset

The Import Fileset functionality enables updates to the Validation Errors Summary and the Summary report (derived from files supplied by the Statutory Body), and detail reports (provided by SIMS) to be imported into SIMS between SIMS releases.

To use the Import Fileset functionality (via **Tools | Setups | Import Fileset**), you must be a member of one of the following user groups in System Manager:

- Returns Manager
- System Manager.

For more information about the Import Fileset functionality, please refer to the applicable preparation guide. To access the SIMS **Documentation Centre**. Click the **Documentation** button located on the top right-hand side of the SIMS **Home Page**.

Where to find More Information about Permissions

Please contact your System Administrator/Manager if you are not sure whether you have the required permissions. For more information, please refer to the *Managing SIMS Users, Groups and Databases* handbook.

The [SIMS Permissions spreadsheet](#) describing the numerous permissions available in SIMS is available on the support portal.

What Version of SIMS is Required?

To run the return, you must install the SIMS 2024 Summer Release (7.218) or later.

To check which version of SIMS is installed, open SIMS and then select **Help | About SIMS**.

The version should read 7.218 or later.

Preparing Data for the School Census Return

For more up-to-date checklist, including the latest information and enhancements, please refer to the online [Preparing Data for the School Census Return support article](#).

Before beginning the process of producing the return, it is advisable to spend time ensuring that all school level and pupil level information is present and accurate in SIMS. For example, ensure that school details are correct, all new pupils have been added to SIMS, all leavers have been recorded, etc.

The following information is collected from Nursery schools for the School Census Autumn Return.

School Level Data

Characteristics:

- LA number
- DfE establishment number
- school name
- school phase
- school type
- highest national curriculum year
- lowest national curriculum year
- intake type
- governance
- school email address
- school telephone number.

Pupil Level Data

- Pupil Identifiers: UPN, former UPN, surname, forename, middle names, former surname, preferred surname, date of birth and gender.
- Characteristics:
 - first language
 - post looked after arrangements
 - top-up funding indicator, funded free entitlement hours, extended entitlement childcare hours, 30 hour code, disability access fund indicator and hours at setting
 - service children in education indicator
 - school dinner taken (**applicable to schools with pupils in Reception, Year 1 and Year 2**)

- free school meal eligibility start date, end date and UK country in which the eligibility applies
- Status:
 - enrolment status
 - date of entry
 - part-time indicator
 - boarder indicator
 - actual national curriculum year group (year taught in).
- Special Educational Needs:
 - SEN provision
 - member of SEN unit (sometimes called special class) indicator
 - member of resourced provision indicator.
- Home Information: Pupil's home address, unique property reference number (UPRN).

For more information and instructions on all of the preparations that need to be carried out before the census return is produced, please refer to the [Preparing for the School Census](#) guide.

The preparation guide, together with other useful School Census documentation, is available from the SIMS **Documentation Centre** (accessed via the **Documentation** button, which is located on the top right-hand side of the SIMS **Home Page**).

03 | Producing the School Census Autumn Return

Creating a New School Census Return	9
Configuring the Census Folder	11
Specifying the Security Message for Reports	12
Editing Census Details.....	12
Editing School Information	13
Editing Early Years.....	15
Editing Pupils with Top-Up Funding	19
Editing Pupil Post Looked After Arrangements.....	21

Creating a New School Census Return

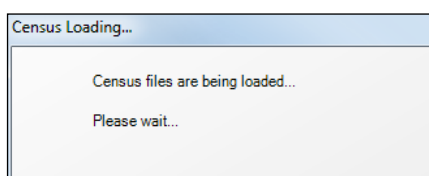
For more up-to-date guidance, including the latest information and enhancements, please refer to the online [Creating a New School Census Return support article](#).

Before creating a new return, ensure that all pupil and school information is present and accurate in SIMS.

It is possible to create more than one return, enabling you to carry out dry runs so that you can check what data needs to be added or updated. Any unwanted returns can be deleted (providing they have not been authorised).

Data is collected for all pupils on-roll on the census day.

1. Select **Routines | Statutory Returns | School Census** to load the School Census validation and reporting files.



NOTE: The first time that **Routines | Statutory Returns | School Census** is selected during each SIMS session, there is a delay while the School Census files are loaded.

When the files are loaded, the **Census Return** browser is displayed.

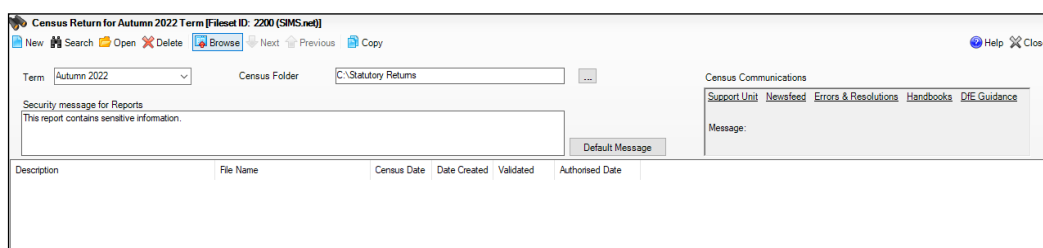
03| Producing the School Census Autumn Return

The **Census Communications** message box includes links to the newsfeed, errors and resolutions document, handbooks, DfE guidance and Support Unit website (if available). Any additional information to help with the completion of the return is also displayed, if applicable.

NOTES:

The **Fileset ID** is displayed in the browser header (for information only). The following graphic shows the position for the first release in the 2200 fileset series, where the fileset is obtained from the *SIMS .net* folder. As soon as any further release in the series is imported, the reference to the *SIMS .net* folder is no longer displayed. This is because the fileset data is then obtained from the document server. Instead the import date is displayed adjacent to the **Fileset ID**.

If a post-release consolidated database patch is applied, the patch ID and run date are also displayed in the browser.



By default, the **Term** field displays the appropriate term for the selected return, in this instance **Autumn 202**.

2. Ensure that the **Census Folder** is selected correctly and that the required **Security message for Reports** is specified, as described in the following sections.



More Information:

Deleting an Unauthorised Return on page 38

Specifying the Security Message for Reports on page 12

Configuring the Census Folder

Before creating a return, the folder in which the return file will be saved must be specified.

IMPORTANT NOTES: Due to the sensitive nature of some of the data stored in SIMS, careful consideration must be given when specifying the location of any folder into which you save sensitive data, e.g. census returns, imported and exported CTFs, etc.

You should be mindful of your school's responsibilities with respect to information security. Consider which users have access to the chosen folder, especially if the folder is shared on a server. Please refer to the government website for more information about securing your information (<https://www.gov.uk/service-manual/technology/securing-your-information>). If you are in any doubt, you should consult with your IT Security Officer before proceeding.

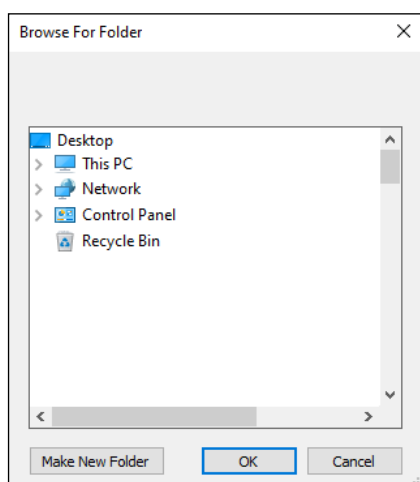
The General Data Protection Regulation (GDPR), which replaces the Data Protection Act 1998, is a directive for certain safeguards regarding the use of personal data. It is important that schools process all data (not just the data collected for the school census) in accordance with the full requirements of the GDPR.

Further information on the GDPR can be found on the Guide to the General Data protection Regulations (GDPR) page of the Information Commissioners Office (ICO) website (<https://ico.org.uk/for-organisations/guide-to-the-general-data-protection-regulation-gdpr>).

1. In the **Census Folder** field, enter the location of the folder where the return files are to be stored.

Alternatively, click the **Browse** button to display the **Browse For Folder** dialog.

 *Browse button*



2. Navigate to the location of the required folder and highlight it. If a suitable folder does not exist, click the **Make New Folder** button, then enter a suitable name for the new folder.

IMPORTANT NOTE: If you are changing the location of the folder, ensure that authorised personnel only have access to the new folder, as the folder will contain sensitive data. For more information, please see the important note at the beginning of this section.

3. Click the **OK** button.
A message dialog requests confirmation that you want to continue.
4. Click the **OK** button to select or create the folder and return to the browser, where the new folder name is displayed.
5. Ensure that the **Security Message for Reports** is appropriate for your school.

Specifying the Security Message for Reports

For more up-to-date guidance, including the latest information and enhancements, please refer to the online [Configuring the Census Folder and Specifying the Security Message for Reports support article](#).

The **Security message for Reports** field displays the text that will be included in the header of each report.

The default text (**This report contains sensitive information**) can be edited, if required. Clicking the **Default Message** button reverts the amended text to the original default text.

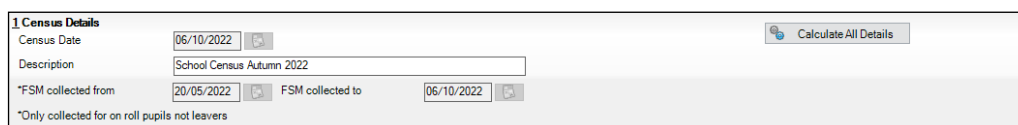
When the security message and census folder are specified, a new return can be created. Click the **New** button to display the **Census Return Details** page.

Editing Census Details

For more up-to-date guidance, including the latest information and enhancements, please refer to the online [Editing Census Details support article](#).

The **Census Details** panel displays the following read-only information:

- Census Date
- FSM (Free School Meal) data collected (**applicable to on-roll pupils only**).



The screenshot shows the 'Census Details' panel with the following fields and values:

Census Date	06/10/2022	Calculate All Details
Description	School Census Autumn 2022	
*FSM collected from	20/05/2022	FSM collected to 06/10/2022

*Only collected for on roll pupils not leavers

The default **Description** (**School Census Autumn 2023**) can be edited, if required, e.g. to identify a dry run.

WARNING: Each description used must be unique. An error message is displayed if SIMS identifies a duplicate description.

*A unique description also helps to identify the required return when viewed in the **Census Return** browser and can be particularly useful when creating dry runs, or copies of existing returns.*

Calculating All Details

Clicking the **Calculate All Details** button extracts the required information from SIMS and displays the results in the applicable panels of the **Census Return Details** page.

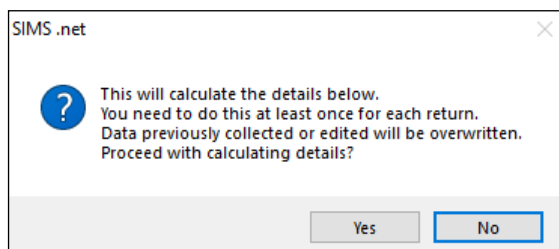
IMPORTANT NOTE: You must calculate all details at least once to populate the various panels for each return.

Do not use the **Calculate All Details** button more than once if you wish to keep any changes you have made. Clicking the **Calculate All Details** button overwrites any previously collected or edited data (in every panel where details are calculated automatically) with the data currently stored in SIMS.

Any details that are calculated automatically should be checked and edited, if required.

1. Click the **Calculate All Details** button.

A message advises that any existing data currently shown on the **Census Return Details** page will be overwritten.



2. Click the **Yes** button to calculate all details.

At this point, depending on the number of pupils in the school, there might be a short delay while details are calculated.

The applicable panels on the **Census Return Details** page are then populated with data.

3. The return can be saved at any point by clicking the **Save** button.

Editing School Information

For more up-to-date guidance, including the latest information and enhancements, please refer to the online [Editing School Information support article](#).

The **School Information** panel displays details that have previously been recorded on the **School Details** page in SIMS (**Focus | School | School Details**). The information displayed might vary depending on your school and the details entered, e.g. Academy specific information.

The details displayed are read-only but can be amended, if necessary, via the **School Detail** button.

1. If any details are missing or incorrect, click the **School Detail** button to display the **School Detail** dialog, where information applicable to your school is displayed.

2. Add or amend the school details, selecting from the drop-down lists where applicable.

NOTE: The **School Name**, **LA number**, **Establishment Number**, **School Phase** and **Curriculum Years** were set up when SIMS was installed. If any of these details are incorrect, please contact your Local Support Unit for assistance.

3. Ensure that the establishment's six digit **Unique Reference Number** (URN) is entered. The number is available via the Get information about schools website (<https://get-information-schools.service.gov.uk/>), which is a register of schools and colleges in England.
4. Click the **Save** button, then click the **OK** button to return to the **Census Return Details** page, where the updated details are displayed.

Information for Academies

2 School Information							
School Name	Green Abbey School		Previous Name	Previous Name School	Date Changed	31/07/2017	
LA	823	Establishment Number	4321	Previous Estab Number	1234	Earliest DOA	17/07/2017
Telephone	851234	URN		Previous URN		Date Changed	
School E-mail Address	office@ga.org.uk						
School Phase	SS Secondary						
School Type	Academies						
Governance	Academies	Intake Type	Comprehensive				
Lowest NC Year	7	Highest NC Year	13				
School Detail							

Academies should also ensure that the following information is recorded, if applicable:

- The **School Type** and **School Governance**.
Select **Academies** from the applicable drop-down lists.
- The **Previous Name** and **Date Name Changed**.
- The **Previous Estab Number** and **Earliest DOA** (date of admission).
This information is used by School Census. If the establishment number (DfE number) has changed for sponsor-led Academies, historical information is not collected, and the earliest date of admission is reported in the School Census.
- The **Previous URN Number** (used by other census returns) and **Date Number Changed**.
This information is used by the School Workforce Census. For all types of Academies opened in the collection period, the date that the establishment's URN changed is used to determine when the academy was formed. Historical information is not collected from before the date the URN changed.

Editing Early Years

For more up-to-date guidance, including the latest information and enhancements, please refer to the [Managing Early Years Data support article](#).

Early Years data is collected from all schools that have early years pupils on-roll on census day. The following items are collected:

- Hours at Setting
- Funded Hours

03| Producing the School Census Autumn Return

- Disability Access Fund
- 30 Hour Code
- Extended Funded Hours.

NOTE: Disability Access Fund, 30 Hour Code and Extended Funded Hours are not collected in the census for pupils aged two at 31st August.

Funded Hours and Hours at Setting

Funded universal free entitlement hours are the total number of free childcare hours that a child receives. All three and four year old pupils are eligible for 15 hours funded childcare a week. Advice about the eligibility of two year old children for funded childcare can be found on the DfE website (<https://www.gov.uk/help-with-childcare-costs/free-childcare-2-year-olds>).

Hours at Setting include funded free entitlement hours (as described previously) plus any additional hours funded by other means.

The hours collected in this return are for the week in which the census day falls.

Disability Access Fund

The Disability Access Fund (DAF) is payable as a lump sum once a year and awarded to three and four year old pupils who meet the following criteria:

- They are in receipt of child Disability Living Allowance (DLA) and
- They access their entitlement to free early learning and childcare, e.g. funded hours.

Disability Access Fund data is collected in this return for pupils who are in receipt of the fund on census day.

Additional information about the Disability Access Fund is available via the DfE website (<https://www.gov.uk/education/early-years-funding>).

Extended Funded Hours and 30 Hour Code

Extended Funded Hours are the number of hours that a child can receive in addition to the initial 15 funded hours. Extended Funded Hours are applicable to three and four year old pupils only.

Extended Funded Hours can double the original 15 hours of free childcare to 30 hours a week, i.e. 15 funded free entitlement hours + 15 extended entitlement hours = 30 hours, provided that the following criteria are met:

- Both parents must be working (or the sole parent is working in a lone parent family) and live in England.
- Each parent earns, on average, a weekly minimum equivalent to 16 hours at National Minimum Wage or National Living Wage.
- Each parent must have an annual income of less than the specified amount.

Parents who meet the extended funded hours criteria must obtain a unique code from the Tax Office (HM Revenue & Customs), then provide it to the school, together with other details, to confirm their eligibility for extended childcare hours.

The 11-digit **30 Hour Code** and the number of extended funded hours are collected in this return for the week in which the census day falls.

Extended Funded Hours information provided by the DfE can be found on their website (<https://www.gov.uk/government/publications/30-hours-free-childcare-la-and-early-years-provider-guide>).

Recording Early Years

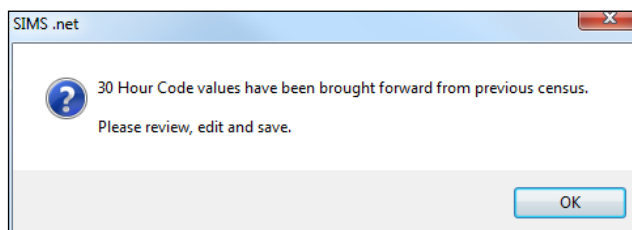
The required data can be recorded:

- via the **Edit** button in the **Early Years** panel
- via **Tools | Statutory Returns Tools | Update Early Years - Update Early Years** page. The data in the **Early Years** panel must be refreshed by clicking the **Recalculate** button after using the Update Early Years routine.

If data has been recorded previously, the values are displayed in the read-only **Early Years** panel. Only cohorts applicable to your school are displayed.

3 Early Years											
Name	Date of Birth	AdNo.	YT1	Reg	Age at 31/08/2022	Age at 31/12/2022	Hours at Setting	Funded Hours	Disability Access Fund	30 Hour Code	Extended Funded Hours
Atkins,Eve	28/07/2019	001840	N2	PM	3	3	15	15	No		
Birkett,Scott	03/03/2019	001841	N2	AM	3	3	15	15	No		
Cardale,Luke	17/05/2019	001842	N2	PM	3	3	30	15	No	1003887533	
Carmichael,Meghan	21/06/2019	001843	N2	AM	3	3			No		
Ciobanu,Mitica	23/09/2018	001844	N2	AM	3	4			No		
Clifton,Rhianna	25/04/2019	001845	N2	PM	3	3			No		
Dickinson,Adam	05/12/2018	001846	N2	PM	3	4			No		

- In the **Early Years** panel, click the **Edit** button to display a message informing you that data has been brought forward from the previous census.



- Click the **OK** button to display the **Update Early Years** page. By default, the current term is displayed in the **Census** panel.

03| Producing the School Census Autumn Return

Update Early Years

Save Undo

Census Term Autumn 2022 Pupils View Age at 31/08/2022 All YTI All Reg All Status All

Pupils

Disability Access Fund, 30 Hour Code and Extended Funded Hours are NOT collected in the census for pupils aged 2 at 31/08/2022

Name	Date of Birth	AdNo.	YTI	Reg	Age at 31/08/2022	Age at 31/12/2022	Hours at Setting	Funded Hours	Disability Access Fund	30 Hour Code	Extended Funded Hours
Atkins,Eve	28/07/2019	001840	N2	PM	3	3	15	15	No		
Birkett,Scott	03/03/2019	001841	N2	AM	3	3	15	15	No		
Cardale,Luke	17/05/2019	001842	N2	PM	3	3	30	15	No	10038877533	
Carmichael,Meghan	21/06/2019	001843	N2	AM	3	3			No		
Ciobanu,Mitica	23/09/2018	001844	N2	AM	3	4			No		
Clifford,Bianca	26/04/2019	001845	N2	PM	2	2			No		

- To add or edit the number of **Hours at Setting, Funded Hours** and **Extended Funded Hours** for an individual pupil, select the required criteria in the **Pupils View** panel.

In the **Pupils** panel, highlight the required pupil, click the applicable cell and then enter the required number of hours.

IMPORTANT NOTES: Values for **Funded Hours, Hours at Setting** and **Extended Funded Hours** should be entered using two decimal places. For example, 1 hour 15 minutes must be entered as 1.25. Zero (0) is an accepted value.

If the value entered is within the range accepted by SIMS but is higher than what the DfE expects, a validation error is displayed when the return is created and validated. An explanation as to why the value is higher should be recorded on the COLLECT Portal.

- If most of the pupils are receiving the same number of hours, the following method can be used to populate the column quickly:
 - In the **Pupils View** panel, select the required year group from the Year Taught In (**YTI**) drop-down list. The selected pupils only are displayed in the **Pupils** panel.
 - Right-click in the **Pupils** panel, then select **Select All** from the drop-down list.
 - Click in one of the highlighted cells of the column you wish to populate, i.e. **Hours at Setting, Funded Hours** or **Extended Funded Hours**, then enter the number of hours that is applicable to most pupils. This number is then entered automatically for all the selected pupils.
 - Click to the right of the grid to deselect all.
 - Edit the entry for each pupil who is receiving a different number of hours. This is achieved by highlighting the required pupil, clicking the associated **Hours at Setting, Funded Hours** or **Extended Funded Hours** cell (as applicable) then entering the required number.
- Indicate whether the pupils are in receipt of the **Disability Access Fund**. Click the applicable cell then select **Yes** or **No** from the drop-down list.
- Enter the 11 digit **30 Hour Code** in the applicable cell, if in receipt of extended funded hours.

IMPORTANT NOTE: Each pupil must have a different 30 hour code. Ensure that all 11 digits are entered.

7. Click the **Save** button.
If there are any pupils for whom zero hours have been recorded, a message is displayed. Click the **Yes** button to save the data or the **No** button to return to the **Update Hours** page, where the number of hours can be entered.
8. Click the **OK** button to return to the **Census Return Details** page, where the updated hours are displayed.

IMPORTANT NOTES:

If, while completing the return, any of the following processes are performed, click the **Recalculate** button (located at the top right-hand side of the **Early Years** panel) to ensure that the up-to-date data is displayed:

- any information is updated via **Tools | Statutory Return Tools | Update Early Years**
- a new pupil is added in SIMS
- a pupil's date of birth is amended.

Please note that when information is updated via the **Edit** button, the **Early Years** panel is refreshed automatically.



More Information:

Early Years Report on page 29

Using the Status to determine if Hours at Setting or Funded Hours are recorded

1. On the **Census Return Details** page, click the **Edit** button (located in the **Early Years** panel) to display the **Update Early Years** page.
2. In the **Pupils View** panel, ensure that the required **Age at date**, **YTI** and **Reg** group are selected and then select **No Hours at Setting** (or **No Funded Hours**) from the **Status** drop-down list.
Only pupils who do not have an entry for **Hours at Setting** (or **Funded Hours**) are displayed.
3. Enter the required values for these pupils as described previously.
4. Click the **Save** button.

Editing Pupils with Top-Up Funding

For more up-to-date guidance, including the latest information and enhancements, please refer to the [Editing Pupil/Students with Top-Up Funding article](#).

Top-up funding is supplied to schools, in most cases by the Local Authority, to meet the additional costs of support for high needs pupils.

The **Top-up Funding** panel enables you to record the on-roll pupils for whom your school is receiving top-up funding on census day.

03| Producing the School Census Autumn Return

If the pupils with top-up funding have been recorded previously via **Tools | Statutory Return Tools | Update Top-Up Funding**, the data is displayed in the **Top-up Funding** panel.

4 Top-up Funding						
Surname	Preferred Surname	Forename	YTI	Reg	SEN	Ever in
Ackton	Ackton	Charlotte	4	4SL		No
Mascott	Mascott	Peter	3	3TO		No
Selbourne	Selbourne	Piers	3	3TO		No

The information displayed in the **Top-up Funding** panel is read-only. Updating top-up funding information, e.g. adding or removing a pupil, must be done via the **Edit** button.

1. Click the **Edit** button to display the **Update Pupils with Top-up Funding** dialog. The pupils currently recorded as having top-up funding are displayed in the **Top-up Funding** list (located in the bottom half of the page).
2. Use the **Students On-Roll on Census Day** search criteria to locate the additional pupils you wish to record as having top-up funding.

***TIP:** Click the **Search** button to display a list of all pupils who have not been defined as having top-up funding. Alternatively, enter all or part of the required search criteria then click the **Search** button.*

Term	Autumn 2022	Students On-Roll on Census Day					
Surname	white	Forename		YTI	All	Reg	All
Preferred Surname		SEN	<Any>	Ever in care at this school	<Any>	Search	
Surname	Preferred Surname	Forename	YTI	Reg	SEN	Ever in Care	
White	White	Theo	4	4ES		No	
Whitehead	Whitehead	William	6	6VC		No	
Whitemore	Whitemore	Paige	4	4SL		No	

3. Highlight the pupil(s) who you want to record as having top-up funding, then click the **Add** button to move the selected pupil(s) to the **Top-up Funding** list.

One or more pupils can be selected using the **Ctrl+click** or **Shift+click** functionality.

Term: Autumn 2022 Students On-Roll on Census Day

Surname: white Forename: YTI: All Reg: All

Preferred Surname: SEN: <Any> Ever in care at this school: <Any> Search

Surname	Preferred Surname	Forename	YTI	Reg	SEN	Ever in Care
White	White	Theo	4	4ES		No
Whitemore	Whitemore	Paige	4	4SL		No

Top-up Funding Add Remove

Surname	Preferred Surname	Forename	YTI	Reg	SEN	Ever in Care
Ackton	Ackton	Charlotte	4	4SL		No
Mascott	Mascott	Peter	3	3TO		No
Selbourne	Selbourne	Piers	3	3TO		No
Whitehead	Whitehead	William	6	6VC		No

- To remove a pupil from the **Top-up Funding** list, highlight the required pupil, then click the **Remove** button. The pupil's record is moved to the **Students On-Roll on Census Day** list, from where it can be reselected if required.
- Click the **Update** button to save the data and arrange the list of pupils in **Surname** order.
- Click the **OK** button located at the bottom right-hand side of the screen to return to the **Census Return Details** page, where the updated information is displayed in the **Top-up Funding** panel.



Additional Resources:

Preparing for the School Census Autumn Return guide

Editing Pupil Post Looked After Arrangements

For more up-to-date guidance, including the latest information and enhancements, please refer to the [Editing Pupil/Students Post Looked After Arrangements support article](#).

The Post Looked After Arrangements routine provides schools with the ability to record whether pupils who are on-roll on census day were looked after immediately before adoption or prior to being the subject of a residence or special guardianship order.

If the pupils with post looked after arrangements (PLAA) have been recorded previously via **Tools | Statutory Return Tools | Update Post Looked After Arrangements**, the data is displayed in the **Post Looked After Arrangements** panel.

03| Producing the School Census Autumn Return

1. Click the **Recalculate** button (in the **Post Looked After Arrangements** panel) to ensure that all pupils who already have a PLAA status are displayed.

5 Post Looked After Arrangements						
Surname	Preferred Surname	Forename	YTI	Reg	Ever in C...	Ceased to be looked after through
Abhra	Abhra	Shaquib	4	4ES	No	Adoption from England and Wales
Muir	Muir	Ayiden	1	OAK	No	Adoption from England and Wales
Zanni	Zanni	Luca			No	Special guardianship order (SGO) from England and Wales

The information displayed in the **Post Looked After Arrangements** panel is read-only. Updating the information, e.g. editing the PLAA status or adding a pupil, must be done via the **Edit** button.

2. Click the **Edit** button to display the **Update Pupils Post Looked After Arrangements** page. Any pupils currently recorded as having PLAA are displayed in the **Post Looked After Arrangements** list located in the bottom half of the page.
3. Use the **Students On-Roll on Census Day** search criteria to locate the additional pupils you wish to record as having PLAA.

***TIP:** Click the **Search** button to display a list of pupils who have not been defined as having PLAA. Alternatively, enter all or part of the required search criteria then click the **Search** button.*

Surname	Preferred Surname	Forename	YTI	Reg	Ever in Care
Carter	Carter	April	2	2GH	No
Carter	Carter	Ryan			No
Carter	Carter	Thomas	6	6VC	No

4. Highlight the pupils who you want to record as having PLAA, then click the **Add** button to move the selected pupils automatically to the **Post Looked After Arrangements** list.

One or more pupils can be selected using the **Ctrl+click** or **Shift+click** functionality.

Surname	Preferred Surname	Forename	YTI	Reg	Ever in Care	Ceased to be looked after through	Evidence Obtained
Abhra	Abhra	Shaquib	4	4ES	No	Adoption from England and Wales	<input type="checkbox"/>
Muir	Muir	Ayiden	1	OAK	No	Adoption from England and Wales	<input type="checkbox"/>
Zanni	Zanni	Luca			No	Special guardianship order (SGO) from England and Wales	<input type="checkbox"/>
Carter	Carter	April	2	2GH	No		<input checked="" type="checkbox"/>
Carter	Carter	Thomas	6	6VC	No	<div style="border: 1px solid black; padding: 2px;"> Adoption from England and Wales Adoption from state care outside of England and Wales Special guardianship order (SGO) from England and Wales Residence order (RO) from England and Wales Child arrangement order (CAO) from England and Wales </div>	<input checked="" type="checkbox"/>

- For each pupil added to the **Post Looked After Arrangements** list, select the post looked after arrangement status by clicking in the applicable cell in the **Ceased to be looked after through** column, then selecting the required status from the drop-down list:
 - Adoption from England and Wales
 - Adoption from state care outside of England and Wales
 - Special guardianship order (SGO) from England and Wales
 - Residence order (RO) from England and Wales
 - Child arrangement order (CAO) from England and Wales.
- Select the **Evidence Obtained** check box if documents have been obtained that provide evidence of the post looked after arrangements.

If you indicate that evidence has been obtained, ensure that the applicable documents are stored securely either outside of SIMS or within the Document Management Server.

NOTE: Evidence Obtained is not collected in the School Census return but should be recorded as proof of DfE/Ofsted compliance.

- To remove a name from the list, highlight it then click the **Remove** button. The record is moved to the **Students On-Roll on Census Day** list, from where it can be reselected, if required.
- Click the **Update** button to save the information and arrange the list of pupils in surname order.

If you have indicated that evidence has been obtained, you are reminded to ensure that the necessary documents are stored securely outside of SIMS or within the Document Management Server.
- Click the **OK** button to continue.
- Click the **OK** button (located at the bottom right-hand side of the screen) to return to the **Census Return Details** page, where the updated information is displayed in the **Post Looked After Arrangements** panel.



Additional Resources:

Preparing for the School Census Autumn Return guide



More Information:

Post Looked After Arrangements Report on page 30

04 | Completing the School Census Autumn Return

Creating and Validating the School Census Return.....	25
Producing Detail Reports	28
Printing a Report from your Web Browser	31
Deleting Temporary Web Browser Files	31
Producing the Summary Report	32
Editing an Unauthorised Return	32
Authorising the Return.....	33
Submitting the Return	35
Retrieving Authorised Census Return Files	36
Copying a Return	37
Deleting an Unauthorised Return	38

Creating and Validating the School Census Return

For more up-to-date guidance, including the latest information and enhancements, please refer to the [Creating and Validating the school Statutory Return support article](#).

A return must be created, validated and authorised before it can be sent to your Local Authority or uploaded to the DfE COLLECT data collection website (as applicable to your school).

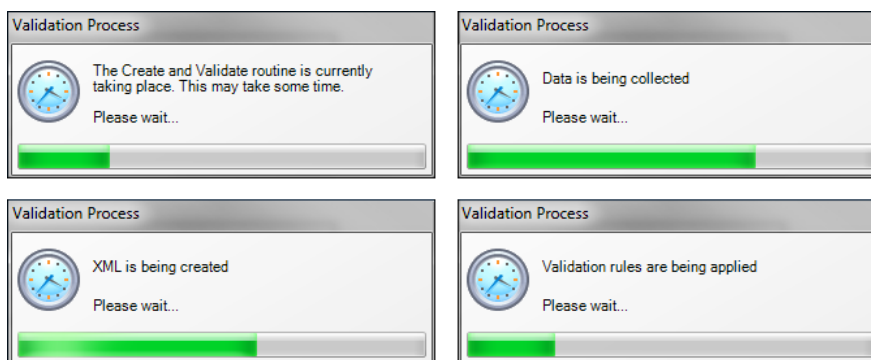
Validating the return creates an unauthorised return file, which is then run against a set of DfE rules. When the validation is complete, a list of errors and queries is displayed.

An error is caused by either missing or inaccurate data, whilst a query highlights data that is unusual or not as expected, e.g. there are no pupils showing as having special educational needs.

1. Select **Routines | Statutory Returns | School Census** to display the **Census Return** browser.
2. Click the **Search** button to display a list of returns.
3. Double-click the required return to display the **Census Return Details** page.
4. Click the **Create & Validate** button to start the process. There may be a short delay, depending on the number of pupils at your school.

04| Completing the School Census Autumn Return

A progress bar is displayed, indicating that the Create and Validate process is being performed.



During the Create and Validate process, SIMS examines the data for any anomalies applicable to your school phase, e.g. no top-up funding information.

If an anomaly is found, a message is displayed, which provides the opportunity to continue to create and validate or cancel the process, so that details can be checked. Detail reports are available to assist you when checking details.

When the validation process is complete, the **Validation Errors Summary** panel is displayed at the bottom of the screen.



Additional Resources:

Dealing with Missing Marks section in the *Edit Marks Routine* chapter of the *Managing Pupil/Student Attendance* handbook

The *DfE Validations and SIMS Solutions Excel* workbook

(https://customer.support-ess.com/csm?id=kb_article_view&sysparm_article=KB0050590).

Resolving Validation Errors and Checking Queries

For more up-to-date guidance, including the latest information and enhancements, please refer to the [Resolving Validation Errors and Checking Queries support article](#).

After creating the return file and validating the data, any errors and queries found are listed in the **Validation Errors Summary** panel.

Type	Sequence	Message	Location	Solution
F	1500	UPN missing	Name: Abraham, Janel Date of Birth: 2005-05-19, Female UPN:	# Go to Focus Student Student Details and add or issue a UPN.
F	1500	UPN missing	Name: Reid, Rosiel Date of Birth: 2009-03-07, Female UPN:	# Go to Focus Student Student Details and add or issue a UPN.
F	1840	Pupils aged 5 and over Language missing or invalid.	Name: Henderson, Jacki Date of Birth: 2010-05-07, Male UPN: K8222999140	# Go to Focus Student Student Details Ethnicultural panel and enter First language
F	2350	Insufficient Address information provided.	Name: Bains, Kirki Date of Birth: 2005-01-18, Male UPN: H820200709012	# Go to Focus Student Student Details Addresses and edit pupil's address
Q	1601Q	Please Check: Pupil's age is out of range for school type.	Name: Sungail, Skaisle Date of Birth: 2008-03-28, Female, Age: 12 UPN: B8	# Go to Focus Student Student Details and enter pupil's date of birth.
Q	1620Q	Please check: duplicate pupil records with the same Surname, Forename, Gender and Date of birth.	Name: Bennison, Hugo Date of Birth: 2013-02-03, Male UPN:	# Go to Focus Student Student details and check for duplicate pupil record.
Q	1620Q	Please check: duplicate pupil records with the same Surname, Forename, Gender and Date of birth.	Name: Bennison, Hugo Date of Birth: 2010-02-03, Male UPN: V82329991400	# Go to Focus Student Student details and check for duplicate pupil record.
	2350Q	Please check: Pupil record with no address details.	Name: Bolinks, Chibi Date of Birth: 2013-09-14, Female UPN: C83329991400	# Go to Focus Student Student Details Addresses and add pupil's address

The **Validation Errors Summary** panel header displays the number of errors and queries found when the Create and Validate routine was run. A pupil and error search facility is also available.

The following information is provided to help with the resolution of validation failures:

- **Type** - the type of validation rule.
 - Failure (**F** displayed in red) indicates an error that must be resolved.
 - Query (**Q** displayed in black) indicates that there are unusual data conditions. These should be considered and corrected, if necessary.
- **Sequence** - the validation error or query number.
- **Message** - the validation error or query message text.
- **Location** - the specific record in SIMS that contains the error or query.
- **Solution** - the SIMS menu route and/or instructions about where/how the error can be corrected or the query checked.

TIP: Using the Solution hyperlinks

When the pointer is hovered over an error or query row, it changes to a hand if a hyperlink is available to the area of SIMS where the problem can be checked.

*A hyperlink is also indicated by a hash symbol (#) preceding the **Solution** text.*

Click the required hyperlink to display the specific area in SIMS where the record(s) can be checked/corrected.

To assist in the viewing of errors and queries:

- When the mouse pointer is hovered over a **Message**, **Location** or **Solution**, hover help displays the entire content of that cell.
- The Student Search functionality can be used to display all errors and queries relating to a particular pupil.
 - a. Enter all or part of a UPN, pupil's surname or date of birth in the **Student Search** field.
 - b. Select the required record from the **Student Search** drop-down list to populate the **Student Search** field.
 - c. Click the **Find** button to display the applicable validation records.
- Use the **Errors Search** to display the required error or query you want to view. Select **ALL, ERRORS, QUERIES** or the required number from the drop-down list. The total number of rows that relate to the selected validation is displayed adjacent to the **Error Search** field.
- By default, when **ALL** is selected from the **Errors Search** drop-down list, the errors are displayed at the top of the list.
The order of the items in the list can be changed by clicking the appropriate column heading.
The width of the columns can be changed by dragging the dividing line between the column headings until the required size is achieved.
- View a summary of validation failures by clicking the **Report** button (located above the **Validation Errors Summary** panel, on the left-hand side). The report is displayed in your web browser, from where it can be printed or transferred to another application, if required.

04| Completing the School Census Autumn Return

The report is saved automatically in the **Census Folder** (specified previously via the census browser). The original report, which was generated when the **Create & Validate** button was clicked is also stored in this folder.

- Your generated report file name: Validation Errors Summary.HTML
- Original report file name:
<LACode><SchoolNumber>_<SurveyType>_<LACode><LL><Year>_<SerialNumber>_ValidationErrorsSummary.HTML

For guidance on navigating to files on your local workstation when you are working in a Hosted environment, please contact your System Manager or Local Support Unit.

Resolve as many errors and check as many queries as possible then revalidate the return details. Continue to resolve failures and revalidate the return as many times as necessary.

NOTE: All errors must be resolved, and all queries must be investigated.

If at any point you want to hide the list of error and queries, click the **Close** button located at the top right-hand side of the **Validation Errors Summary** panel. The list is displayed again when the Create and Validate process is run.

Many of the errors generated can be fixed quickly using bulk update functionality (via **Routines | Pupil | Bulk Update**). For more information, please refer to the *Managing Pupil/Students* handbook.

Producing Detail Reports

For more up-to-date guidance, including the latest information and enhancements, please refer to the [Producing Detail Reports support article](#).

Detail reports can be used to check the data stored in SIMS that has been used to create the return. The reports can be produced as soon as the return has been created and validated.

Each detail report header displays the **Security Message** that was defined in the **Census Return** browser, the **Report Criteria** and the **Total Pupils** who are listed in the report. Also included in the report header is the **School Name**, the **Fileset Number**, the **Filename**, the **Report Created** date, and the **XML Version**.

Where a pupil's National Curriculum Year group is different from what their date of birth would suggest, the applicable **YTI** cell is highlighted in yellow.

The reports available for selection may vary depending on your school phase.

On Roll Basic Details Report

Report Criteria: Pupils on-roll on census day.

This report provides the following information about pupils who are on-roll on census day: UPN, legal surname, legal forename, preferred surname, former surname, date of birth, gender, year taught in (YTI), date of admission (DOA), enrolment status, language, part-time status and boarder status.

SEN Report

Report Criteria: On-roll pupil with SEN Provision/Status **E** (Education, Health and Care Plan) or **K** (SEN Support).

This report provides a list of pupils who have special educational needs. Displayed are their UPN, legal surname, legal forename, date of birth (DOB), gender, year taught in (YTI), SEN provision, member of SEN unit and member of resourced provision indicator and on-roll status.

Address Details Report

Report Criteria: Pupils on-roll on census day.

This report provides a list of pupils, their UPN, former UPN, legal surname, legal forename, middle name(s), post code, unique property reference number (UPRN), address details and the administrative area/county.

Definition: Unique Property Reference Number (UPRN) is a unique identifier (reference number) that links together related address records across different software programmes. This enables organisations to collate and share information based on a common reference number.

Free School Meal Eligibility Report

Report Criteria: On-roll pupils on census day who were eligible for free school meals up to census day.

This report provides information on free school meal eligibility for pupils who match the report criteria: UPN, legal surname, legal forename, date of birth (DOB), gender, year taught in (YTI), free school meal eligibility start date, end date and the UK country in which the eligibility applies, and on-roll status.

NOTES: This report includes any free school meals recorded outside of England, e.g. Wales.

Only Free School Meals records where the country recorded is England or <blank> attract the Pupil Premium.

Top-up Funding Report

Report Criteria: On-roll pupils who have been awarded Top-up Funding as at census day.

The report provides the following information: UPN, legal surname, legal forename, date of birth (DOB), gender, year taught in (YTI) and SEN provision.

Early Years Report

Report Criteria: Pupils on-roll on census day who have early years data.

- All 2 year olds (Hours at setting and Funded Hours only)
- All 3 year olds

04| Completing the School Census Autumn Return

- All 4 year olds with Year Taught In E1, E2, N1 or N2.

The report provides the following information for each early years pupil: UPN, legal surname, legal forename, date of birth (DOB), gender, year taught in (YTI), hours at setting, funded hours, 30 hour code, extended funded hours and disability access fund.

Post Looked After Arrangements Report

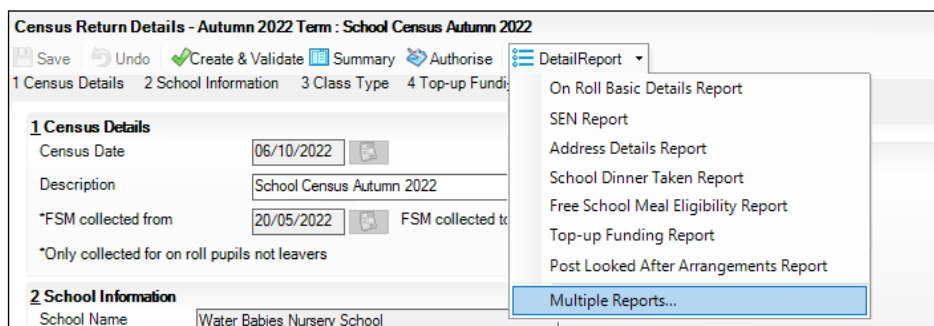
Report Criteria: On-roll pupils who have post looked after arrangements as at census day.

The report provides the following information about pupils who have post looked after arrangements: UPN, legal surname, legal forename, date of birth (DOB), gender, year taught in (YTI) and post looked after arrangements, e.g. ceased to be looked after through adoption.

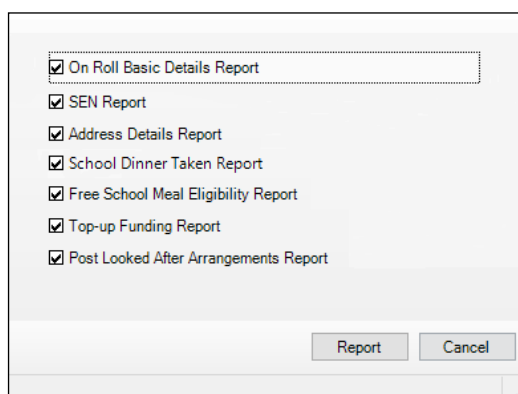
Generating Detail Reports

To select a single detail report, select the required report from the **Detail Report** drop-down list located at the top of the **Census Return Details** page. The selected report is generated automatically and displayed in your web browser.

NOTE: The contents of the graphics are examples only of what you might expect to see when using SIMS to produce the School Census Return.



To run several detail reports, select **Multiple Reports** from the bottom of the **Detail Report** drop-down list to display the **Detail Reports** dialog.



All detail reports are selected by default. If any reports are not required, deselect the associated check box. Click the **Report** button to generate the selected reports, which are displayed in your web browser.

The report(s) are saved automatically in the **School Census Folder**, which was specified in the **Census Return** browser, e.g. S:\SCHOOL CENSUS. For guidance on navigating to files on your local workstation when you are working in a Hosted environment, please contact your System Manager or Local Support Unit.

The report is saved with a filename that is made up of the following data fields separated by underscores ('_'):

```
<LACode><SchoolNumber>_<SurveyType>_<LACode><LL><Year>_<SerialNumber>_<name of the report>_Report.html
```

For example:

```
8201050_SC3_820LL22_001_onroll_pupil_basic_details_report.html.
```



More Information:

Configuring the Census Folder on page 11

Printing a Report from your Web Browser

For more up-to-date guidance, including the latest information and enhancements, please refer to the [Printing a Report from your Web Browser support article](#).

IMPORTANT NOTE: Any printed reports containing information that could identify a person (e.g. their name, address, UPN, etc.) should be used for validation purposes only and should not be retained. The Security Message (displayed at the top of each report) can be customised to include, for example, instructions for the destruction of the printed reports.

1. With the generated report displayed in your web browser, select the **Print** option (**Ctrl+P**) to display the **Print** dialog.
2. Ensure that the print settings are correct then click the **Print** button.
3. Click the **Close** button on the top right-hand corner of the web page to close the report and return to the census page.

Deleting Temporary Web Browser Files

For more up-to-date guidance, including the latest information and enhancements, please refer to the [Deleting Temporary Web Browser Files support article](#).

It is recommended that, after viewing statutory returns reports, you delete any temporary web browser files to ensure that any cached data (i.e. data stored on your machine, which enables high-speed access to previously viewed data) is removed.

This prevents the information, e.g. copies of web pages that are stored in the local cache for faster viewing, remaining on the hard disk of the device in the temporary directory, where it is not secure.

When this process is performed, all temporary files (including any Statutory Returns reports files) that the browser has cached are deleted.

To clear the cache, open your web browser, then clear the browsing data history. For more information, please refer to the documentation applicable to the web browser you are using.

Producing the Summary Report

For more up-to-date guidance, including the latest information and enhancements, please refer to the [Producing the Summary Report support article](#).

The Summary report enables the school staff, who are involved in the return's preparation, to assess the accuracy and completeness of the return data. It should then be passed to the Head Teacher for their review.

NOTE: When the return is authorised, the Summary report is automatically generated and displayed in your web browser.

Generating the Summary Report

Click the **Summary** button located at the top of the **Census Return Details** page. The report is automatically displayed in your web browser but can be transferred to a spreadsheet, if required.

The report is saved automatically in the **Census Folder**, which was specified in the **Census Return** browser, e.g. S:\SCHOOL CENSUS. For guidance on navigating to files on your local workstation when you are working in a Hosted environment, please contact your System Manager or Local Support Unit.

The report is saved with a filename that is made up of the following data fields separated by underscores ('_'):

```
<LACode><SchoolNumber>_<SurveyType>_<LACode><LL><Year>_<SerialNumber>_<name of the report>_Report.html
```

For example: 8201050_SC3_820LL22_001_Summary_Report.html.

It is important that the Head Teacher checks all the information on the Summary report before the return is authorised. Your LA/DfE might request that a copy of the Summary report (which is automatically generated when the return is authorised) is signed by the Head Teacher and sent to the LA/DfE when the return has been authorised.



More Information:

Configuring the Census Folder on page 11

Generating Detail Reports on page 30

Authorising the Return on page 33

Deleting an Unauthorised Return on page 38

Editing an Unauthorised Return

For more up-to-date guidance, including the latest information and enhancements, please refer to the [Editing an Unauthorised Return support article](#).

The return details, e.g. **Description**, **School Information**, etc. can be edited via the **Census Return Details** page at any time prior to authorisation.

IMPORTANT NOTE: An authorised return cannot be edited. If changes are required to an authorised return, use the **Copy** facility to produce a duplicate return (with a unique description) in which the changes can be made.

1. Select **Routines | Statutory Returns | School Census** to display the browser.
2. Ensure that the **Census Folder** and the **Security message for Reports** are correct, then click the **Search** button to display any previously created returns. Unauthorised return files can be recognised by their .UNA suffix.
3. Double-click the required return. Alternatively, highlight the required return, then click the **Open** button to display the **Census Return Details** page.
4. Edit the return details as required.
5. Click the **Create & Validate** button to display the **Validation Errors Summary** panel.
6. Run the detail reports and Summary report and then use the information they provide to assist with resolving errors and queries.
7. Repeat the editing and Create & Validate process again, if necessary.
8. Click the **Save** button.



More Information:

Configuring the Census Folder on page 11

Specifying the Security Message for Reports on page 12

Resolving Validation Errors and Checking Queries on page 26

Producing Detail Reports on page 28

Producing the Summary Report on page 32

Authorising the Return

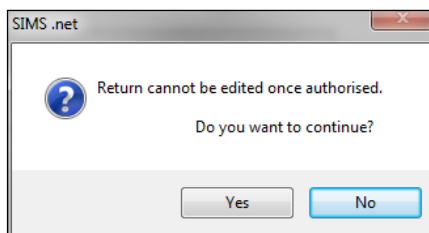
For more up-to-date guidance, including the latest information and enhancements, please refer to the [Authorising the Return support article](#).

A return must be authorised before it can be submitted to your Local Authority or uploaded to the DfE COLLECT data collection website (as applicable to your school). If you authorise a return and subsequently need to make amendments, you must either make a copy of the return and work on the copy or create a new return.

Before authorising the return, you should ensure that all the information displayed on the **Census Return Details** page is correct and does not require further editing. This is because it is not possible to edit details after the return is authorised. The content of the Summary report can be useful when reviewing the information.

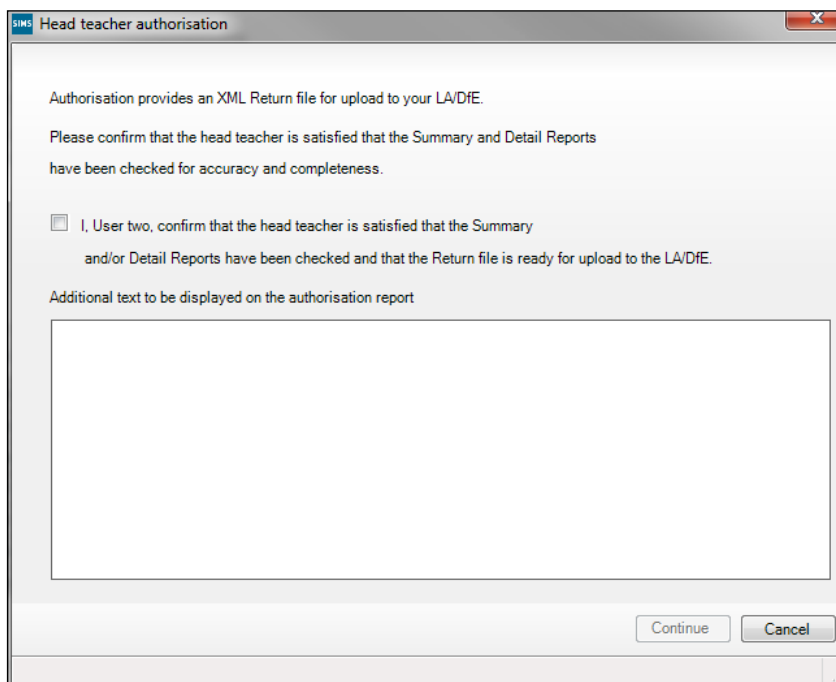
04| Completing the School Census Autumn Return

1. Click the **Authorise** button. A message reminds you that the return cannot be edited once it is authorised.



2. Click the **Yes** button to continue or the **No** button to return to SIMS where edits can be made to the data before authorising.

If you choose to continue, the **Head teacher authorisation** dialog is displayed.



3. Enter any additional text to be displayed on the authorisation report, if required. This may be requested by your LA, e.g. to explain the reason for any validation failures.
4. Select the confirmation check box to confirm that the Head Teacher is satisfied that the Summary and/or detail reports have been checked and that the return file is ready for upload to your LA/DfE.
When the confirmation check box is selected, the **Continue** button is activated enabling you to complete the authorisation process.
5. Click the **Continue** button to authorise the return and prompt the following actions:
 - The return file extension changes automatically from UNA (unauthorised) to XML (authorised).

- The Summary report, Authorisation report and Validation Errors Summary report are generated automatically and displayed in your web browser, from where they can be printed, if required.

All reports (including detail reports) and the XML file are saved in the **Census Folder**, which was specified previously in the **Census Return for Autumn Term** browser.

These reports can be viewed using the Retrieve Authorised Census Return Files routine (via **Tools | Statutory Return Tools**). This routine also provides the opportunity to download the files to a different folder.

IMPORTANT NOTE: *The retrieved files contain sensitive information. Ensure that authorised personnel only have access to the download folder.*

For guidance on navigating to files on your local workstation when you are working in a Hosted environment, please contact your System Manager or Local Support Unit.

After the return is authorised, reports based on cohorts can be created (via **Reports | Design Reports**), so that items collected in the return can be tracked. Provided that **Student** has been selected as the data area, the Statutory Returns sub-report is available for selection when specifying the fields to be included in the report (the last node).



Additional Resources:

Designing and Running Reports handbook



More Information:

Producing the Summary Report on page 32

Retrieving Authorised Census Return Files on page 36

Copying a Return on page 37

Submitting the Return

For more up-to-date guidance, including the latest information and enhancements, please refer to the [Submitting the Return support article](#).

When the return has been completed and the Summary report has been signed by the Head Teacher (if requested to do so by your LA), the .XML file can be uploaded to the DfE COLLECT data collection website or sent to your LA, depending on the instructions you have been given.

Guidance about how Local Authorities, schools and academies should submit the census data is available on the GOV.UK website (<https://www.gov.uk/guidance/school-census>).

The authorised return file can be located in the folder previously specified in the **Census Return** browser. For guidance on navigating to files on your local workstation when you are working in a Hosted environment, please contact your System Manager or Local Support Unit.

IMPORTANT NOTE: *An authorised file cannot be edited. If you need to make changes to an authorised file, you must make a copy of the original file, rename it and work on the copy.*



More Information:

Configuring the Census Folder on page 11
Copying a Return on page 37

Retrieving Authorised Census Return Files

For more up-to-date guidance, including the latest information and enhancements, please refer to the [Retrieving Authorised Census Return Files support article](#).

Authorised returns are stored in your Document Management Server (DMS). The Returns Manager can download and run the reports associated with previous authorised returns enabling the data for the current return to be compared with that submitted previously.

1. Select **Tools | Statutory Returns Tools | Retrieve Authorised Census Return Files** to display the **Retrieve Authorised Census Return Files for <census name>** page.
2. Select the type of census required from the **Return Type** drop-down list to display a list of previous returns that match the selected criteria.
3. By default, the **Download to** field displays the folder specified previously in the **Census Return** browser. To specify a different folder:
 - a. Click the **Select a folder** button (...) to display the **Browse For Folder** dialog. Navigate to the location of the required folder then highlight it. If a suitable folder does not exist, click the **Make New Folder** button then enter a suitable folder name.

IMPORTANT NOTE: *Ensure that authorised personnel only have access to the download folder because the retrieved files contain sensitive information.*

For guidance on navigating to files on your local workstation when you are working in a Hosted environment, please contact your System Manager or Local Support Unit.

- b. Click the **OK** button to select or create the folder and then return to the **Retrieve Authorised Return Files for <census name>** page, where the chosen folder name is displayed in the **Download to** field.
4. Highlight the return you wish to retrieve then click the **Retrieve Files** button.

The authorised return file (i.e. the XML file) and all reports associated with the selected return are downloaded from your DMS to the specified folder. The folder and its contents are then displayed automatically, enabling you to open the required files in your web browser.
 5. The contents of the specified folder can be viewed again by clicking the **Folder** button adjacent to the **Download to** field.

If you want to create reports based on cohorts, so that items collected in the return can be tracked, a sub-report is available (via **Reports | Design Reports**).

The **Statutory Returns** sub-report is available for selection only if **Student** has been selected as the Data Area.

When you **Select fields to be included in the report**, the **Statutory Returns** sub-report is located at the bottom of the list (the last node). Three options are available for selection under this sub-report: **Authorised Date**, **File Name** and **Return Description**.



Additional Resources:

Designing and Running Reports handbook

Copying a Return

For more up-to-date guidance, including the latest information and enhancements, please refer to the [Copying a Return support article](#).

An unauthorised return can be copied and saved as a new return. This enables a 'snapshot' of a return to be taken at any time providing a backup of any manual changes that have been made to the return, for example before recalculating details.

This functionality can also be used to make a copy of an authorised return if the LA or DfE requires it to be resubmitted. The necessary corrections can then be made to the data. The copied return must be saved, created, validated and authorised before resubmitting.

NOTE: Ensure that the return you wish to replicate is not open at the time of copying.

1. Select **Routines | Statutory Returns | School Census** to display the census browser.
2. Click the **Search** button to ensure that the list of returns is displayed.
3. Highlight the file you want to copy then click the **Copy** button.

A message prompts for confirmation that you wish to make a copy of the selected return.

IMPORTANT NOTE: Any values for Early Years, Top-up Funding, Post Looked After Arrangements, Funding and Monitoring, and Attendance (where applicable), will not be copied but will be populated from the current values held in the database.
The Create & Validate routine must be run to generate a new census file.

4. Click the **Yes** button to make the copy, which is then displayed in the browser as:
Copy of <description of selected file>.
5. To rename the copied return, highlight it, then click the **Open** button to display the **Census Return Details** page.
6. In the **Census Details** panel, edit the **Description** then click the **Save** button.

IMPORTANT NOTE: A unique description must be used for each return. If duplicate returns are detected, an error message is displayed.

Deleting an Unauthorised Return

For more up-to-date guidance, including the latest information and enhancements, please refer to the [Deleting an Unauthorised Return support article](#).

During the return process, several copies of the return might be created, e.g. to track progress. When the return has been authorised successfully, it is advisable to delete any versions of the return that are no longer required. This keeps the number of files in the storage folder and listed in the browser to a minimum, therefore removing confusion and lessening the risk of selecting the incorrect return.

The Delete routine can be used to remove unwanted returns at any time prior to the relevant return being authorised.

IMPORTANT NOTES: *When a return file is deleted, any associated files, e.g. Validation Errors Summary, detail reports, etc. that have been produced are also deleted.*

Any return files that have already been authorised cannot be deleted.

1. Select **Routines | Statutory Returns | School Census** to display the browser.
2. Click the **Search** button to ensure that the list of return files is displayed.
3. Highlight the return file to be deleted, then click the **Delete** button. A message prompts for confirmation that the selected return should be deleted.
4. Click the **Yes** button to permanently delete the selected return file and all associated report files.

The selected return file and associated reports are removed from the browser and the storage folder.

Index

3

30 hour code 15, 29

A

academies 15

access rights 5

address details report 29

authorising 33

 retrieving previous authorised census
 returns 35

 school census 33

C

calculating all details 13

census details

 checking dates 12

 editing description 12

configuring

 school census defaults 11

copying

 school census return 36

creating

 a new return 9

creating & validating 25

D

data collected

 school level 6

 pupil level 7

default folder

 defining 12

deleting

 school census return 37

 temporary web browser files 31

description

 editing 12

detail reports

 generating 30

 producing 28

disability access fund 15, 29

E

early years data

 30 hour code 15

 disability access fund 15

 extended funded hours 15

 funded hours 15

 hours at setting 15

 report 29

 updating 15

editing

 an unauthorised return 32

 census description 12

 early years 15

 post looked after arrangements 22

 school information 14

errors and queries (validation)

 resolving 26

extended funded hours 15, 29

F

free school meals

 eligibility report 29

funded hours

 no hours recorded 20

 updating 15

H

hours at setting

 no hours recorded 20

 updating 15

N

new return

 starting 9

O

on-roll basic details report 28

P

permissions 5

I | Index

post looked after arrangements	
editing	22
report	30
preparation	
checking data	6
minimum version of SIMS	6
permissions	5
previous authorised census returns	35
printing	
reports	31, 35
validation errors summary	26
producing	
the return	9
Q	
queries and errors (validation)	
resolving	26
R	
reporting	
deleting temporary web browser files ..	31
designing reports	35
producing detail reports	28
address details report	29
early years report	29
free school meal eligibility report	29
generating detail reports	30
on-roll basic details report	28
post looked after arrangements report	30
SEN report	29
top-up funding report	29
specifying security message	12
resolving	
errors and queries	26
retrieving	
authorised census return files	35
return	
creating	9
permissions	5
S	
school census return	
authorising	33
configuring the storage folder	11
copying	36
creating a new return	9
deleting	37
new	9
submitting	35
school information	
checking	6, 14
security	
deleting temporary files	31
specifying security message	12
SEN report	29
SIMS	
version required to create return	6
steps to producing the return	
flowchart	3
submitting the return	35
summary report	
printing	31
producing	32
T	
temporary web browser files	
deleting	31
top up funding	
top-up funding report	29
updating	20, 29
transferring	
submitting the return	35
U	
unauthorised return	
copying	36
deleting	37
editing	32
updating	
early years data	15
post looked after arrangements	22

top-up funding 20
uploading the return 35

V

validation failures
 resolving 26